



\$404M

Paid annually by members in **taxation revenues** to all levels of government



\$950M

Private sector investments in 2020 in gateway infrastructure & expansion projects in BC



\$1.4B

Contributed by BCMEA members in **provincial GDP**



\$5.1B

Total economic output in 2020



\$204M

Paid annually by members to **federal Port Authorities** in British Columbia

\$180B

worth of cargo handled in 2020 by BCMEA member terminals



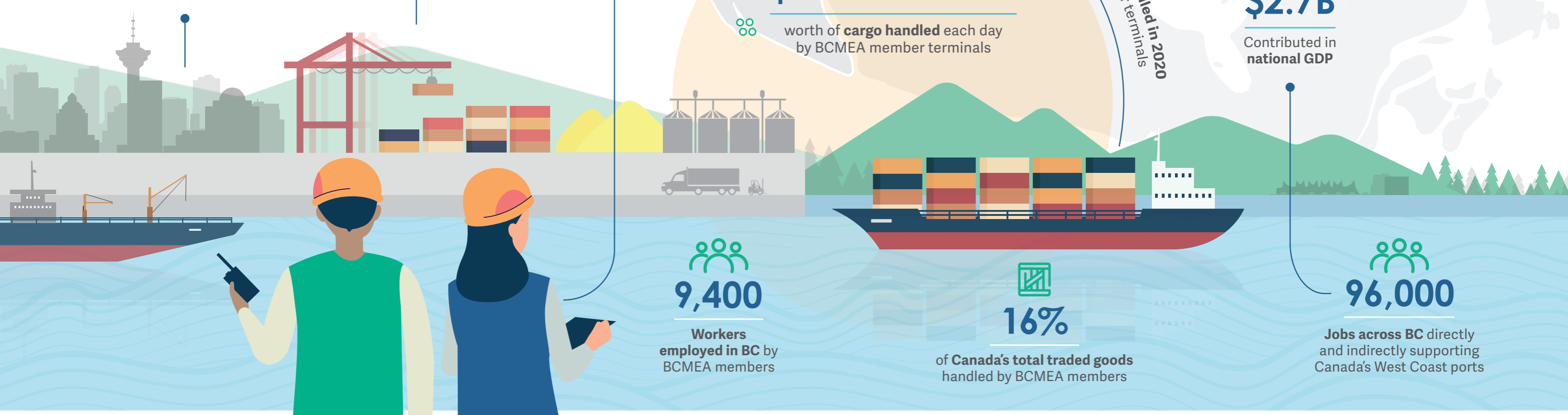
\$500M PER DAY

worth of **cargo handled** each day by BCMEA member terminals



\$2.7B

Contributed in **national GDP**



9,400

Workers employed in BC by BCMEA members



16%

of Canada's total traded goods handled by BCMEA members



96,000

Jobs across BC directly and indirectly supporting Canada's West Coast ports

