

May 25, 2010



Canadian Pacific Boosts 2010 Spending Plans

John D. Boyd May 24, 2010 3:28PM GMT
The Journal of Commerce - News Story

Improving economy, solid earnings cited in expansion of capital programs Canadian Pacific Railway is raising by about \$66 million the amount it plans to spend on capital improvements this year, for a new spending program that ranges between \$708 million and \$756 million.

“The improving economy, our strong balance sheet, and solid earnings and free cash flows have enabled us to expand our capital programs to take advantage of growth and productivity opportunities,” said Kathryn McQuade, CP’s chief financial officer.



CANADIAN PACIFIC

CP is Canada’s second-largest railroad, and complements its east-west network across that country with large regional holdings in the U.S. upper Midwest and a bridge line in New York.

Besides approving an increase in capital spending, which includes track maintenance and expansion programs, CP’s board also raised the quarterly dividend paid to shareholders. McQuade said the railroad’s “strong franchise showed resilience through the recession, and this dividend increase continues our trend of dividend growth aligned with earnings growth.”

CP’s earnings jumped 74 percent in the first quarter, amid a general surge in rail earnings compared with the same time last year when freight traffic was shrinking rapidly. However, freight shippers in Canada have also been complaining to authorities about service issues this year.

Union Meeting Nights

Mainland Locals

Vancouver (500) June 9, 2010
New West. (502) June 9, 2010

Vancouver Island Local

Chemainus (508) June 14, 2010

Northern Local

Prince Rupert (505) June 8, 2010

Please be guided by the provisions of Article 15 in the Collective Agreement respecting working restrictions and conditions on Union Meeting

In this issue:

CP Boosts 2010 Spending.....	1
PMV Road Closure.....	2
PMV Commissioner St Chart.....	3
Industry Calendar.....	3
Weekly Statistics:	
~Dispatch Shortages	4
~Vancouver Casual	5
Dispatch	
BCMEA Meeting Dates.....	5





PORT METRO
vancouver

May 25, 2010

To: Port Metro Vancouver – South Shore Tenants
BC Maritime Employers Association
ILWU
BC Trucking Association
Chamber of Shipping
CP Rail
CN Rail

Re: Commissioner / McGill St. Access Closure

Effective Monday, June 7th, 2010, the Commissioner / McGill Street access gate will be closed to all **inbound** passenger and service vehicles from 07:30 am to 10:00 am (daily) Monday through Friday.

During the closure window, access to the South Shore is available via Clark Drive or Heatley Avenue entrances.

The closure will enable **two** truck lanes supporting container drayage trucks and commercial vehicles (with a GVW of 8,200 kg or more) access to the South Shore.

As container volume returns to the South Shore, this pro-active measure is required to alleviate the potential for congestion minimizing the **backing up** of container trucks onto McGill Street affecting both the 2nd Narrows Bridge and flow thru traffic from Hwy 1 into the City, ensuring a safer transit environment.

Traffic flows will be reviewed after 30 days.

Passenger and service vehicles normally utilizing this entrance between 07:30 am – 10:00 am, will be refused entry and redirected to Clark Drive or Heatley Avenue.

All vehicle exiting through Commissioner gate will remain unchanged.

Land Operations
Port Metro Vancouver

100 The Pointe, 999 Canada Place, Vancouver, B.C. Canada V6C 3T4

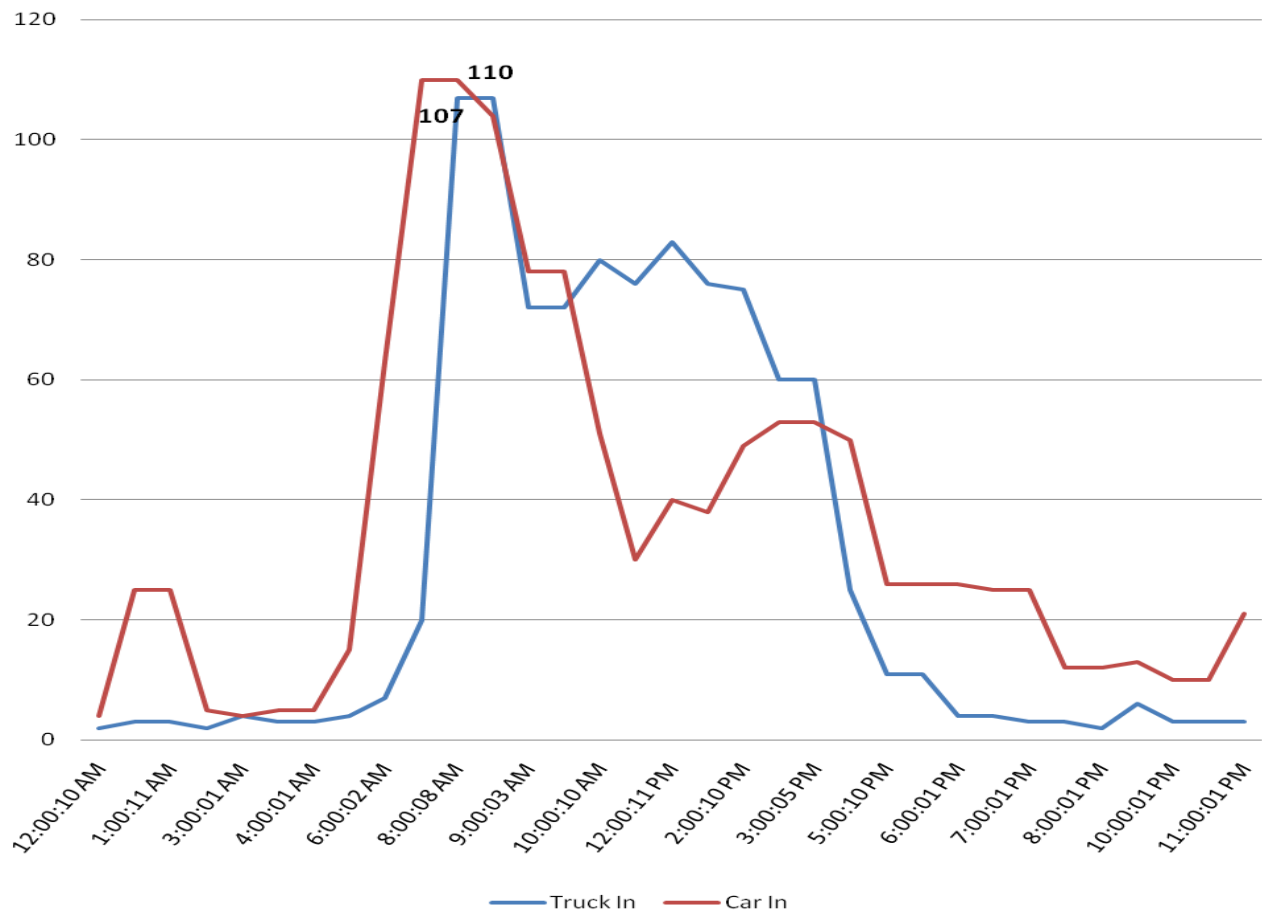
100 The Pointe, 999 Canada Place, Vancouver, C.-B. Canada V6C 3T4

portmetrovancover.com

Canada



Commissioner Access Point Tues - 13 Apr 10



Industry Calendar of Events:

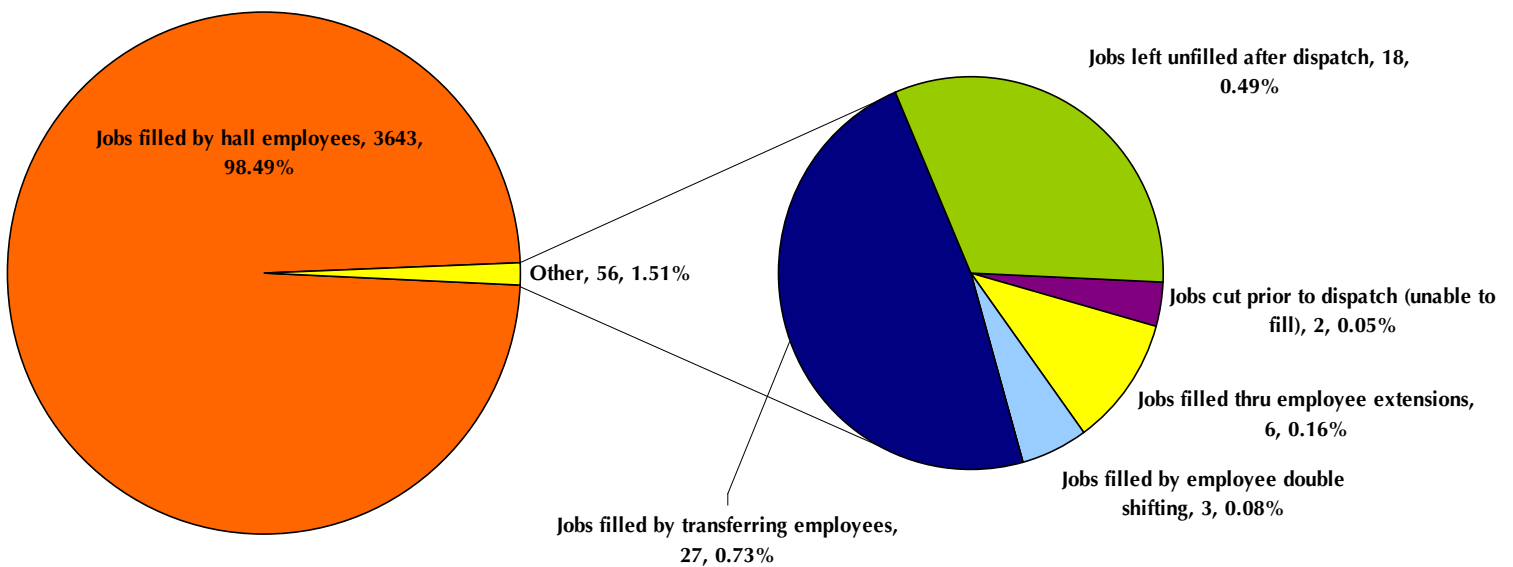
- May 25-26 **ACPA National Port Operations & Environment Seminar**
Vancouver Marriott Pinnacle, Vancouver, BC
- May 26-28 **PORTSECURE 2010, Canada's Annual Port & Maritime Security Expo**
Fairmont Pacific Rim in Vancouver, British Columbia.
- May 27 **Vancouver Transportation Club - NSR Pub Night**
Vancouver, BC
- June 2 **Vancouver Transportation Foundation Golf Tournament**
Fraserview Course, Vancouver
- June 3 **APGST Annual General Meeting and Board Meeting**
Vancouver Maritime Museum, BC
- June 10 **VTC Dinner with Minister Stockwell Day**
Executive Inn, Richmond
- June 15 **PMV Annual General Meeting**

Dispatch Shortage Statistics:

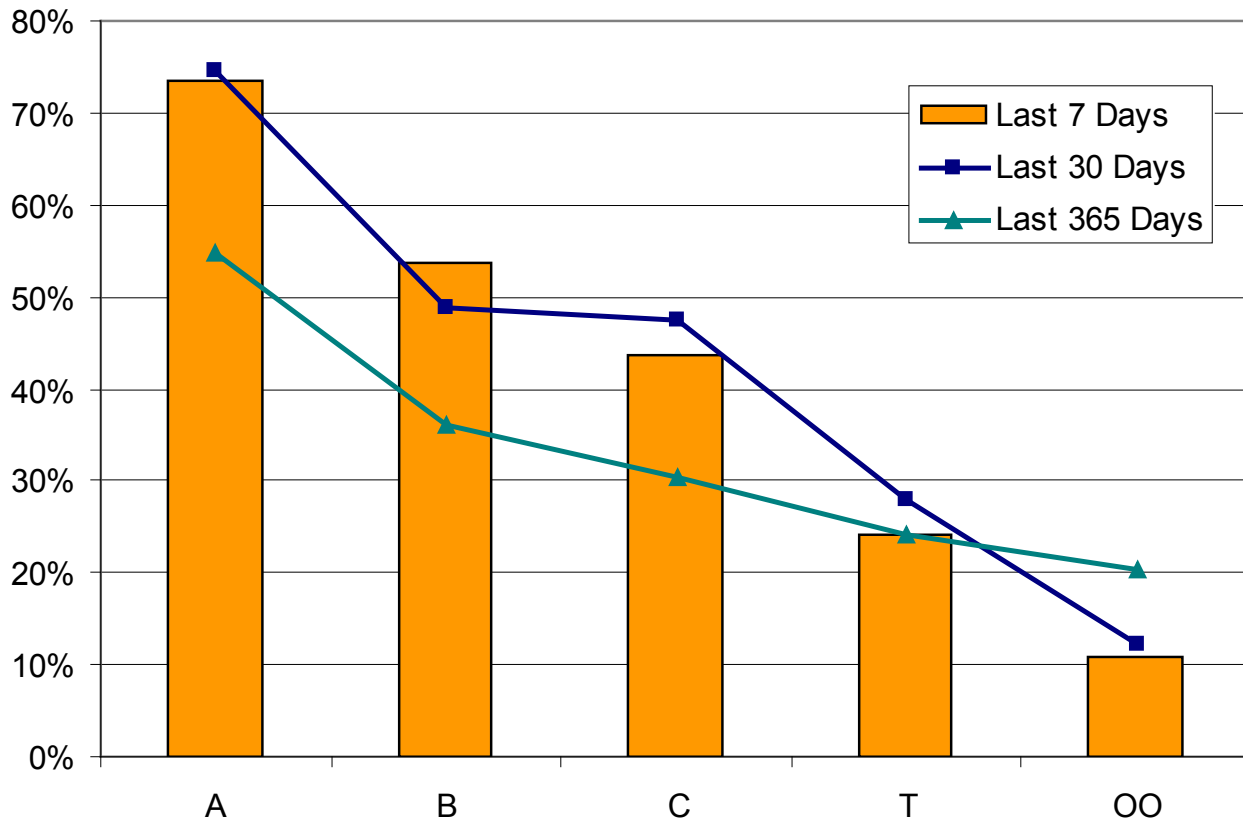
For the Period Sunday May 16, 2010 to Saturday May 22, 2010

JOB	Jobs cut prior to dispatch (unable to fill)	Jobs filled thru employee extensions	Jobs filled by employee double shifting	Jobs filled by local 502 employees	Jobs filled by transferring employees	Jobs left unfilled after dispatch	TOTAL
BULK OPERATOR			1		5		6
CARPENTER						2	2
CHECKER (DOCK)					2		2
DOCK GANTRY		6			2		8
DRIVER					1		1
ELECTRICIAN	1		1		2	2	6
F.E.L.					3		3
H.D. MECHANIC						6	6
HATCH TENDER					1		1
HEAD CHKR					1		1
LOCIE ENGINEER	1				3		4
MILLWRIGHT			1		1	4	6
MOBILE CRANE OP					2		2
PLUMBER						1	1
PUSHER					1		1
SHIP GANTRY					1		1
SWITCHMAN					1		1
WHEAT MACHINE						1	1
WHEAT SPECIALTY					1	2	3
TOTAL	2	6	3		27	18	56

Explains how shortages were handled by Dispatch



Vancouver Casual Employee % Dispatched per Dispatch Board



Future BCMEA Meeting Dates:

Board of Directors Meeting
Tuesday, May 25th 2010
9:30AM - 11:30AM
5th Floor Boardroom
349 Railway Street

Finance & Audit Committee
Friday, June 18th 2010
9:30am - 11:30am
5th Floor Boardroom
349 Railway Steet

Board of Directors Meeting
Tuesday, June 29th 2010
9:30AM - 11:30AM
5th Floor Boardroom
349 Railway Street

Board of Directors Meeting
Tuesday, Sept. 28th 2010
9:30AM - 11:30AM
5th Floor Boardroom
349 Railway Street

Your Feedback:



Have something for the
BCMEA Bulletin?

Send your comments
or contributions to the
Bulletin's Editor at
editor@bcmea.com or
(604) 694-2324.