

May 5, 2010



## OOCL Counts the Carbon

Mike King | Wed, 28 Apr 2010

Container line launches calculator to help clients reduce emissions

Hong Kong-based container line OOCL has launched a new carbon calculator to help customers measure their supply chain emissions.

The company claimed the product was the first of its kind, able to offer multiple shipment searches and full intermodal data.

The calculator uses OOCL's vessel fleet carbon dioxide emissions data and Clean Cargo Working Group (CCWG) calculation methodology.

OOCL said the system's processes, data and methodology had been verified by the Hong Kong Polytechnic University.

"China recently announced it would reduce its carbon intensity by 40-45% by 2020, and Hong Kong businesses have a leadership role to play in this emissions reduction strategy," said CEO Philip Chow.

"We noticed that our customers were becoming increasingly concerned about their carbon emissions on specific routes. We listened to their needs and this calculator provides a useful tool to help them with their calculations.

"We aim to refresh the data on a quarterly basis, to allow customers to have the most updated emissions results for their shipments."

### Industry Calendar of Events:

- |           |   |
|-----------|---|
| May 2-8   | <b>North American Occupational Safety &amp; Health Week 2010</b>  |
| May 4-5   | <b>9th Annual Port/Government Interface 2010</b><br>Delta Ottawa Hotel & Suites   |
| May 13    | <b>Maritime Arctic 2010 Seminar</b>   |
| May 17-21 | <b>International Tug &amp; Salvage Conference</b><br>Westin Bayshore Vancouver, BC  |
| May 25-26 | <b>ACPA National Port Operations &amp; Environment Seminar</b>  |
| May 26-28 | <b>PORTSECURE 2010, Canada's Annual Port &amp; Maritime Security Expo</b><br>Fairmont Pacific Rim in Vancouver, British Columbia. |
| June 3    | <b>APGST Annual General Meeting and Board Meeting</b>   |



## Executive Committee for 2010 - 2011

**President:** Bart Dueck - Lions Gate Trailers  
**Past President:** John White  
**1st Vice-President:** Jon Ciobanu - Norton Lilly International  
**2nd Vice-President:** Ed Lapins - E.A.L. Trucking  
**Secretary/Treasurer:** Rick Barnes - B.C.M.E.A  
**Attendance:** Chris Armer- Fraser Surrey Docks Ltd  
**Membership:** Michael Peter- Dolphin Delivery Ltd  
**Public Relations:** Al Kamal- Arza Employment Services  
**Program:** Rick Prest- Bandstra Transportation  
**Special Events:** John Meneghello- Chevron Canada Limited  
**Director at Large:** Coleman Tokei - KTL Transport/Euro Asia  
**Reception:** John Chimuk- Big Dog Containers Inc  
**Scholarship:** Michael McKay- Rutherford Global Logistics  
**Associates:** Don Starling - Retired  
**Historian:** Walter Sills - Retired  
**Executive Secretary:** Frank Siemens - Landmark Group  
**Web site/ Newsletter:** Rick Barnes - B.C.M.E.A

## Our Objectives;

- ~To foster and promote shipper and carrier co-operation in transportation
- ~To promote sociability and friendship among its members
- ~To effect sound transportation policies through the study and discussion of all questions relating to all phases of transportation
- ~To inspire those in traffic work to promote the importance and dignity of their profession

[www.vancouvertransportationclub.com](http://www.vancouvertransportationclub.com)

## Upcoming Events

### May 13 Dinner Meeting

Inn on the Quay  
 900 Quayside Drive  
 New Westminster

Speaker: Richard Rotteveel from  
 Shadow Line Transportation

The May meeting will be  
 our joint meeting with  
 Master Mariners of Canada

### N.S.R.... Pub Night

Date: May 27, 2010  
 Location: Moose's Down Under  
 Basement 830 West Pender Street  
 Time: 5pm Cost: \$20.00  
 1 drink & appies included



### Agent Vessel Forecast Statistics for past 28 days: April 3, 2010 - May 1, 2010

Number of Companies with working vessels during this period		27
Number of participating companies		22
Participation Levels :	Very High	7
	High	10
	Moderate	3
	Low	2
Average accuracy level		54.07%
Maximum accuracy level		85.83%
Minimum accuracy level		8.89%

### Agent Participation and Accuracy Explanation

Overall Agent Accuracy is based on the forecasting information supplied by the agent compared to the final state of the forecast as supplied by despatch. Agent participation is calculated based on the efforts of the agent in providing forecasting information via the Agent Vessel Forecast System. Participation is based on the comparison between the <u>number</u> of forecasted shifts as against the number of working shifts. Forecast accuracy is based on forecasted shifts and gangs <u>matching</u> with working shifts and gangs.		Percentage of working shifts forecasted
	Very High	More than 90%
	High	61% to 90%
	Moderate	31% to 60%
	Low	up to 30%

### Vancouver Dispatch - Casual Employee Utilization (April 25 - May 1, 2010)

Shift	Week Day	A Board		B Board		C Board		T Board		00 Board		Total Available	Total Dispatched	% Dispatched
		Available	Dispatched	Available	Dispatched	Available	Dispatched	Available	Dispatched	Available	Dispatched			
DAY	Sunday	29	4	9	3	5	0	3	0	3	0	49	7	14%
	Monday	66	66	33	33	48	48	69	28	30	8	246	183	74%
	Tuesday	56	55	26	5	13	3	9	1	4	2	108	66	61%
	Wednesday	57	53	21	3	11	0	8	4	8	4	105	64	61%
	Thursday	63	54	29	3	14	1	4	0	3	2	113	60	53%
	Friday	66	45	21	3	11	2	8	7	5	1	111	58	52%
	Saturday	63	63	23	23	75	75	65	16	34	0	260	177	68%
GRAVEYARD	Sunday	8	2	4	0	2	2	5	2	1	0	20	6	30%
	Monday	45	45	40	36	53	26	38	1	6	0	182	108	59%
	Tuesday	23	2	6	0	10	1	25	1	8	1	72	5	7%
	Wednesday	1	1	19	1	12	4	5	4	8	1	45	11	24%
	Thursday	26	3	33	0	9	0	10	1	4	0	82	4	5%
	Friday	9	1	9	0	4	0	8	1	7	0	37	2	5%
	Saturday	37	36	52	47	53	3	28	1	9	1	179	88	49%
NIGHT	Sunday	57	28	23	1	34	0	14	1	5	0	133	30	23%
	Monday	26	16	6	6	11	5	44	10	17	4	104	41	39%
	Tuesday	30	30	31	10	13	2	7	3	11	2	92	47	51%
	Wednesday	50	27	37	6	14	2	11	3	6	2	118	40	34%
	Thursday	10	5	13	4	8	2	8	3	11	1	50	15	30%
	Friday	31	16	28	2	29	7	19	2	8	5	115	32	28%
	Saturday	17	17	7	7	18	18	61	42	18	0	121	84	69%
Grand Total		770	569	470	193	447	201	449	131	206	34	2342	1128	48%

**Vancouver Gang Stats**  
**April 2010 (as at April 30/10)**

Shift	2/3 Man Special				Basic				Dock Gantry				Grain			
	Req	All	Rec	Shrt	Req	All	Rec	Shrt	Req	All	Rec	Shrt	Req	All	Rec	Shrt
Shift 1 (0100)	16	16	16	0	4	4	4	0	89	89	89	0	78	78	78	0
Shift 2 (0800)	21	21	21	0	69	69	69	0	87	87	87	0	180	180	177	3
Shift 3 (1630)	18	18	18	0	50	50	50	0	80	77	77	3	145	145	138	7
<b>Totals:</b>	<b>55</b>	<b>55</b>	<b>55</b>	<b>0</b>	<b>123</b>	<b>123</b>	<b>123</b>	<b>0</b>	<b>256</b>	<b>253</b>	<b>253</b>	<b>3</b>	<b>403</b>	<b>403</b>	<b>393</b>	<b>10</b>
<b>Percent of Shortage:</b>	<b>0.00%</b>				<b>0.00%</b>				<b>1.17%</b>				<b>2.48%</b>			

**Squamish Gang Stats**  
**April 2010 (as at April 30/10)**

Shift	2/3 Man Special				Basic				Dock Gantry			
	Req	All	Rec	Shrt	Req	All	Rec	Shrt	Req	All	Rec	Shrt
Shift 1 (0100)	0	0	0	0	6	6	6	0	0	0	0	0
Shift 2 (0800)	0	0	0	0	26	24	24	2	0	0	0	0
Shift 3 (1630)	0	0	0	0	24	24	24	0	0	0	0	0
<b>Totals:</b>	<b>0</b>	<b>0</b>	<b>0</b>	<b>0</b>	<b>56</b>	<b>54</b>	<b>54</b>	<b>2</b>	<b>0</b>	<b>0</b>	<b>0</b>	<b>0</b>
<b>Percent of Shortage:</b>	<b>0.00%</b>				<b>3.57%</b>				<b>0.00%</b>			

**Vancouver Island Gang Stats**  
**April 2010 (as at April 30/10)**

Shift	2/3 Man Special				Basic				Dock Gantry			
	Req	All	Rec	Shrt	Req	All	Rec	Shrt	Req	All	Rec	Shrt
Shift 1 (0100)	0	0	0	0	0	0	0	0	0	0	0	0
Shift 2 (0800)	0	0	0	0	133	133	133	0	0	0	0	0
Shift 3 (1630)	0	0	0	0	20	20	20	0	0	0	0	0
<b>Totals:</b>	<b>0</b>	<b>0</b>	<b>0</b>	<b>0</b>	<b>153</b>	<b>153</b>	<b>153</b>	<b>0</b>	<b>0</b>	<b>0</b>	<b>0</b>	<b>0</b>
<b>Percent of Shortage:</b>	<b>0.00%</b>				<b>0.00%</b>				<b>0.00%</b>			

# Dispatch Shortage Stats for April 2010

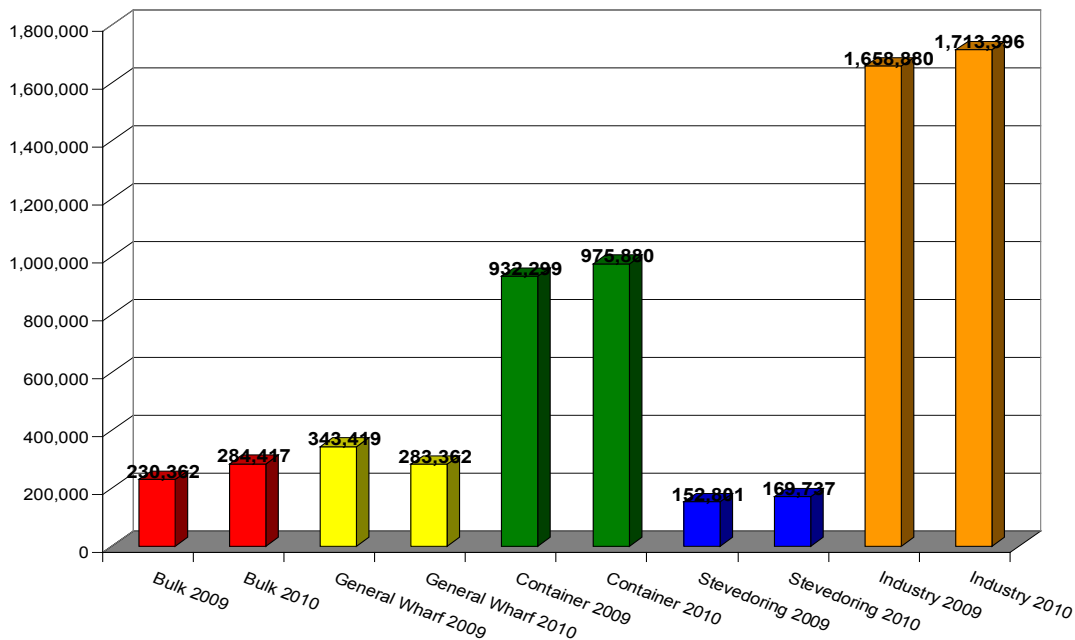
Shortages at commencement and post dispatch, month-to-date April 2010

0100 Shift					0800 Shift				
Rating	At	Shifts	Post	Shifts	Rating	At	Shifts	Post	Shifts
	Dispatch		Dispatch			Dispatch		Dispatch	
DOCK GANTRY	3	2	0	0	CARPENTER (CERT)	5	5	3	3
ELECTRICIAN (CERT)	7	5	3	2	DOCK GANTRY	10	6	0	0
H.D. MECH (CERT)	1	1	0	0	ELECTRICIAN (CERT)	13	8	11	8
MILLWRIGHT (CERT)	2	1	0	0	FIBERCO PUSHER	1	1	0	0
NEPTUNE TRUNK (B.O.)	2	2	0	0	FIBERCO ROTARY DUMP.	1	1	0	0
P.M. BULK LIQUID OP.	3	1	0	0	FIBERCO TRUNK (B.O.)	1	1	1	1
SHIP GANTRY	2	1	0	0	H.D. MECH (CERT)	10	8	7	6
SWITCHMAN (V.W.)	1	1	0	0	HLT (WHITE DOT)	1	1	0	0
TOPSIDE	3	2	0	0	MILLWRIGHT (CERT)	3	2	1	1
V.W. TRUNK (B.O.)	4	3	0	0	NEPT. PORTAL RECLMR	1	1	0	0
1630 Shift					P.M. TRUNK (B.O.)	1	1	0	0
Rating	At	Shifts	Post	Shifts	PLUMBER (CERT)	1	1	0	0
	Dispatch		Dispatch		SHIP GANTRY	1	1	0	0
DOCK GANTRY	13	5	0	0	SWITCHMAN (ALL SITES)	1	1	0	0
DOW CHEMICALS	2	2	1	1	TOPSIDE	5	4	0	0
ELECTRICIAN (CERT)	9	8	3	3	TRACKMAN	6	5	3	3
FIBERCO PUSHER	1	1	0	0	V.W. ADVISOR	4	1	0	0
H.D. MECH (CERT)	16	15	9	9	WELDER	1	1	1	1
LOCIE ENGINEER	2	2	0	0	WHEAT SPEC. PECO	2	2	0	0
P.M. BULK LIQUID OP.	1	1	0	0	WHEAT SPECIALTY	17	11	6	2
SHIP GANTRY	1	1	0	0					
SWITCHMAN (ALL SITES)	1	1	0	0					
TOPSIDE	6	2	0	0					
WELDER (CERT)	1	1	0	0					
WHEAT SPEC. PECO	1	1	0	0					
WHEAT SPECIALTY	26	15	14	6					



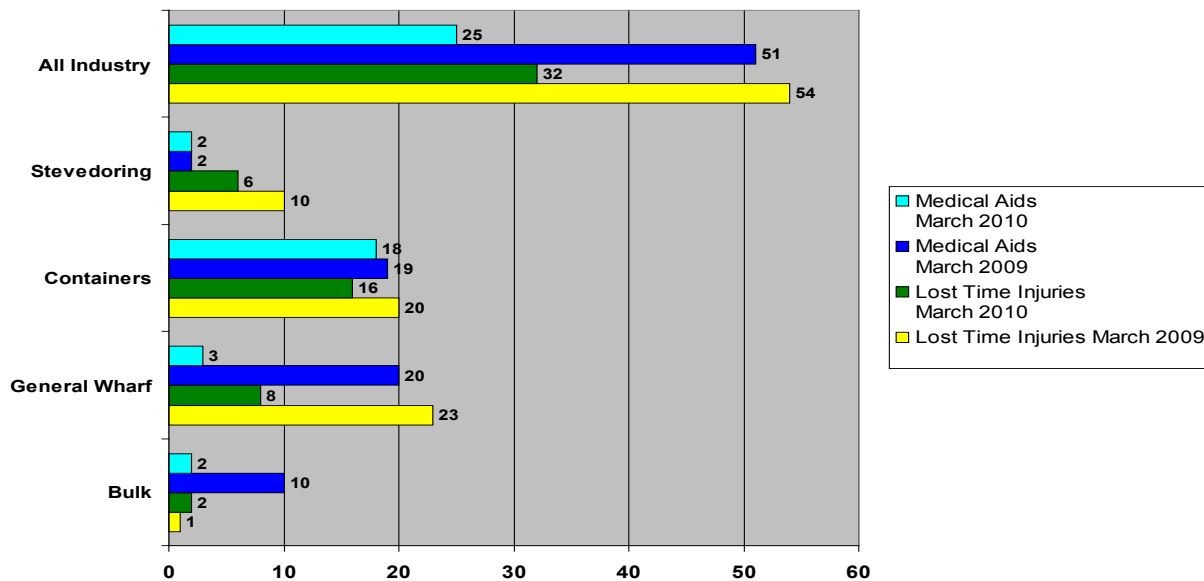
# Monthly Health & Safety Statistics: March Revisions

Sectoral Hours Year - March 2009 vs. March 2010



Lost Time Injuries and Medical Aid 2009 vs. 2010

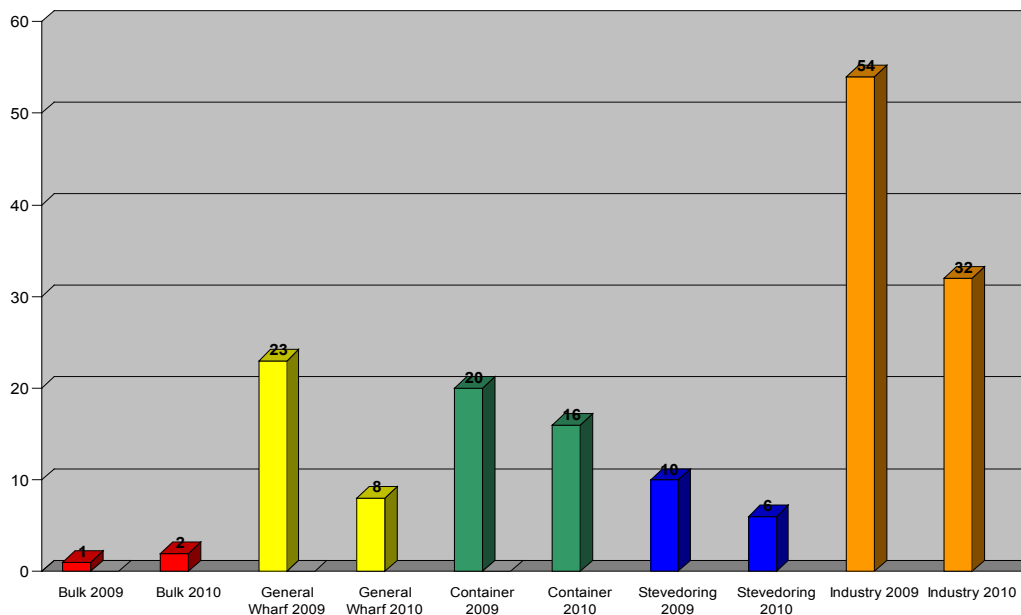
Claims First Reported



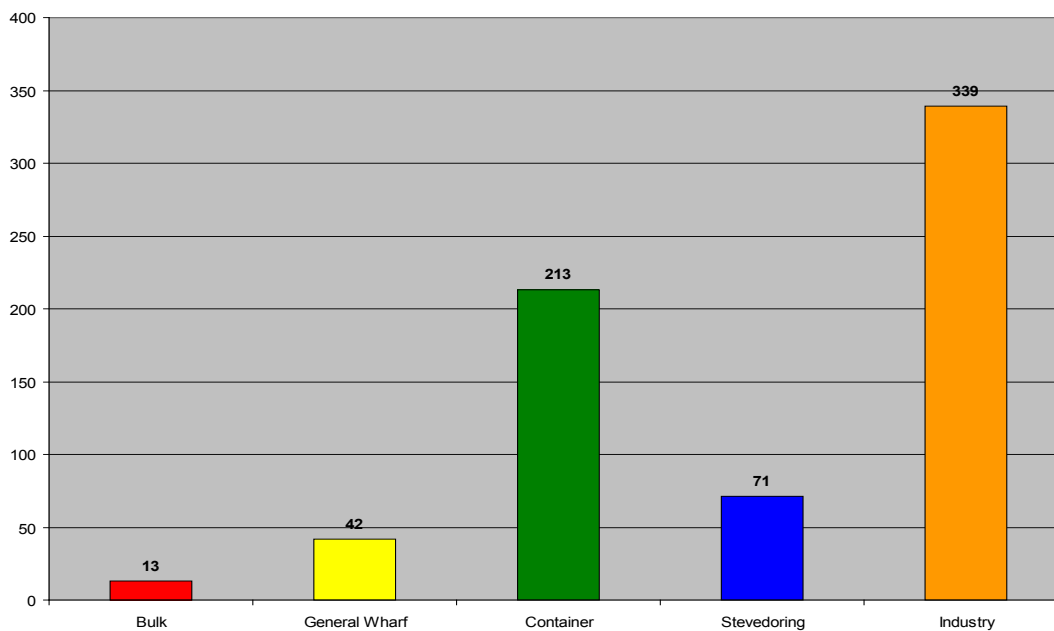
# Monthly Health & Safety Statistics: March Revisions

Lost Time Injuries by Sector - March 2009 vs. March 2010

Claims First Reported



First Aid Incidents - March 2010



*For more information on the monthly Health & Safety graphs please contact Suki Hache, [shache@bcmea.com](mailto:shache@bcmea.com)*

Increase your bottom line.  
Recruit the best workers. Reduce employee turnover.



### Security Industry

Attend a convenient 3-hour workshop for the Security Industry that covers effective recruitment and retention strategies.

You will receive a guide that includes a CD "toolbox" filled with customizable tips, tools, checklists, and sample HR forms.

**\$99 + GST**

May. 4: Vancouver,    May. 18: Kamloops,  
Jun. 22: Nanaimo,    Aug. 24: Prince George,  
Sep. 22: Burnaby,    Oct. 19: Vancouver



### Marine Industry

Attend a convenient 3-hour workshop for the marine industry that covers effective recruitment and retention strategies.

You will receive a guide that includes a CD "toolbox" filled with customizable tips, tools, checklists, and sample HR forms.

**\$99 + GST**

May. 19: Vancouver,    Jun. 23: Vancouver,  
Sep. 15: Nanaimo,    Oct. 20: Vancouver,  
Nov. 16: Prince Rupert,    Nov. 18: Vancouver

For more information or to register, visit:  
<http://www.bcmea.com/hrsme>



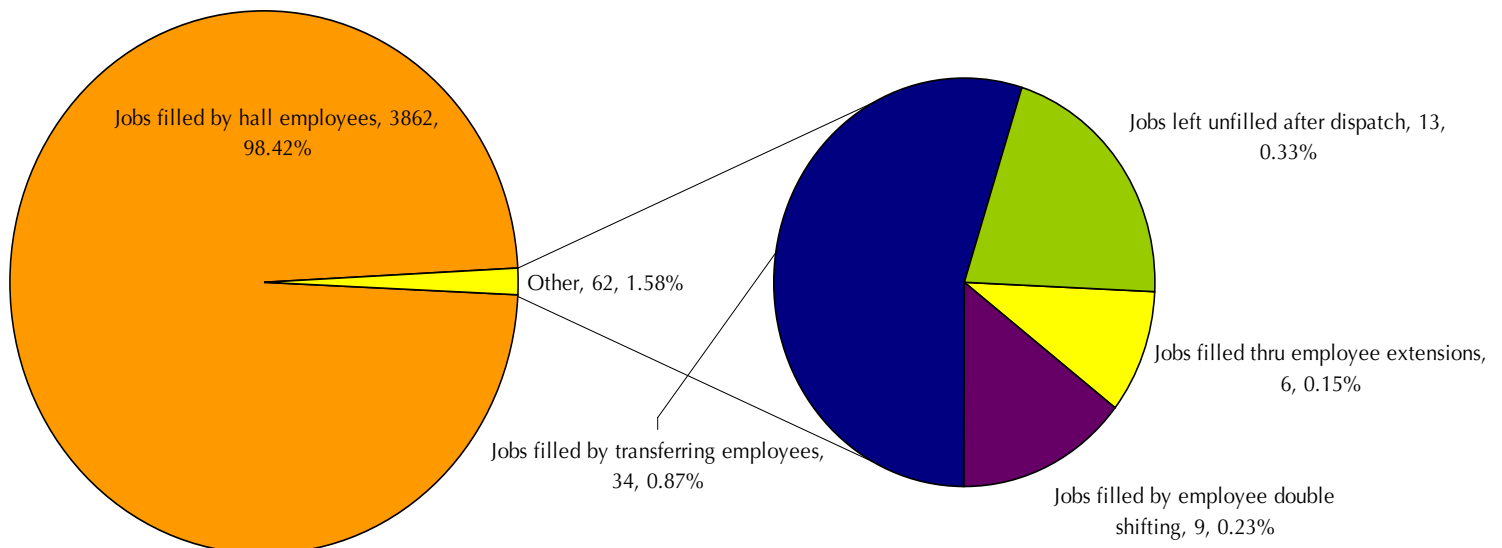
We wish to acknowledge funding support from the Government of Canada's Sector Council Program, Asia-Pacific Gateway and Corridor Initiative, and the Canada/British Columbia Strategic Training and Transition Fund.

# Dispatch Shortage Statistics:

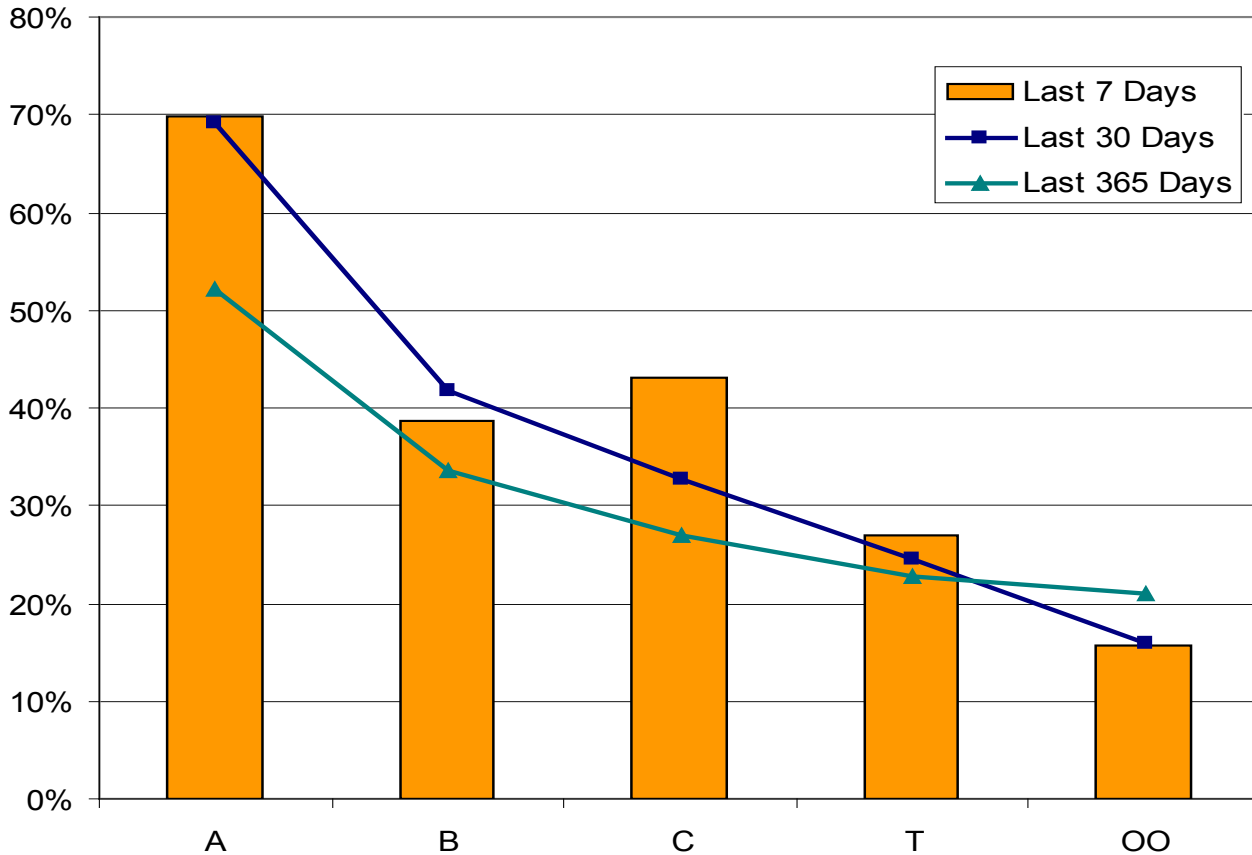
For the Period Sunday April 25, 2010 to Saturday May 1, 2010

Job	Jobs cut prior to dispatch (unable to fill)	Jobs filled thru employee extensions	Jobs filled by employee double shifting	Jobs filled by local 502 employees	Jobs filled by transferring employees	Jobs left unfilled after dispatch	TOTAL
40 TON & RACK					1		1
BULK OPERATOR			1		2		3
BULLDOZER					1		1
BULLDOZER(SHIP)					1		1
CHECKER (DOCK)					1		1
DOCK GANTRY		4			6		10
ELECTRICIAN			3		3	4	10
H.D. MECHANIC			3		1	2	6
HEAD CHKR		2					2
LIQUID BULK					2		2
MILLWRIGHT			2		2	5	9
RUBBER TIRE GTY					3		3
SHIP GANTRY					2	1	3
SHIP LOADER					1		1
TRACKMAN					1	1	2
WELDER					2		2
WHEAT SPECIALTY					5		5
<b>TOTAL</b>		<b>6</b>	<b>9</b>		<b>34</b>	<b>13</b>	<b>62</b>

*Explains how shortages were handled by Dispatch*



## Vancouver Casual Employee % Dispatched per Dispatch Board



### Future BCMEA Meeting Dates:

#### Board of Directors Meeting

Tuesday, May 25th 2010  
9:30AM - 11:30AM  
5th Floor Boardroom  
349 Railway St

#### Finance & Audit Committee

Friday, June 18th 2010  
9:30am - 11:30am  
5th Floor Boardroom  
349 Railway Street

#### Board of Directors Meeting

Tuesday, June 29th 2010  
9:30AM - 11:30AM  
5th Floor Boardroom  
349 Railway St

#### Board of Directors Meeting

Tuesday, Sept. 28th 2010  
9:30AM - 11:30AM  
5th Floor Boardroom  
349 Railway St

### Your Feedback:



Have something for the BCMEA Bulletin?

Send your comments or contributions to the Bulletin's Editor at [editor@bcmea.com](mailto:editor@bcmea.com) or (604) 694-2324.