

April 6, 2010

PORT AUTHORITY SUSPENDS CRUISE SHIP TERMINAL

TERMINAL PROJECT
For immediate release
Date: April 1, 2010

The Nanaimo Port Authority Board of Directors has suspended the \$22-million floating cruise ship terminal project because, to date (April 1), it has not received the federal environmental assessment permits required to proceed with tender and construction of the terminal.

“It’s with a profound sense of disappointment that we’ve been forced to make the decision to suspend this project that’s been six years in the planning,” said Bob Bennie, Board Chair of Nanaimo Port Authority.

The cruise ship terminal project was announced in August 2009 when the Port Authority was successful in securing \$8.5-million of federal stimulus funding that requires expenditure of the funds and completion of the terminal by March 31, 2011.

“We’re very grateful for the federal stimulus funding we received, thanks to the hard work from John Baird, Minister of Transport, Infrastructure and Communities; Stockwell Day, Minister of the Asia Pacific Gateway; Nanaimo MP James Lunney, and many others,” said Bennie.

He added that tenders have to be called “without further delay” in order for construction of the terminal to be completed within the federal deadline of March 31, 2011.

The environmental assessment requires approvals from three federal ministries (Ministry of Environment; Ministry of Fisheries and Oceans; Ministry of Transport, Infrastructure and Communities) in consultation with Snuneymuxw First Nation.

For the past six years the Port Authority has been working with the Snuneymuxw First Nation and, in 2007, together signed a protocol agreement to guide collaborative relationships for projects such as the cruise ship terminal and future projects.

Since 2006 the Port Authority has committed \$5-million of its own funds for the project, secured \$5-million from the provincial government, and obtained funding commitments of \$3.5-million from the Island Coastal Economic Trust and \$8.5-million from the federal government.

The original plan for a fixed dock at the Assembly Wharf was changed to a floating dock because it meant a substantial reduction in the dredging requirements.

The new design incorporates a 300-metre long floating dock that will be able to accommodate the largest cruise ships to ply the west coast and could attract 30 to 40 large cruise ship visits a season, compared to the eight in 2009.



Canada



New 2010 BCMEA Board of Directors

BCMEA is pleased to announce our 2010 Board of Directors;

Chair - Grant Watkins

SHIP OWNERS CLASS

Dave Bedwell - China Ocean Shipping
Richard Chappell - Weyerhaeuser Canada
J. Brock Chrystal - International Chartering
Stephen Pyne - Montship Inc.
David Watson - OOCL (Canada) Inc.



DIRECT EMPLOYERS CLASS

Container Terminal Operators Sub-Class

Matthew Hoag - DP World (Canada) Inc
Jeff Scott - Fraser Surrey Docks LP
Eric Waltz - Terminal Systems Inc.

General Terminal (Break Bulk) Operators Sub-Class

Ron Anderson - Squamish Terminals
Tim Chapman - Western Stevedoring

Bulk Terminal Operators Sub-Class

James Belsheim - Neptune Terminals
Lorne Friberg - Pacific Coast Terminals
Grant Watkins - Fibreco Export Inc.

Industry Calendar of Events

April 12	BCMEA Presentation to House of Commons Standing Committee for the Status of Women - Ottawa, ON
April 21	COS Business of Shipping Course Prince Rupert, BC
April 29 & 30	WESTAC Annual Meeting Regina Inn Hotel & Conference Centre, SK.
April 30 - May 1	Pacific North West Conference of Traffic & Transportation Clubs Vancouver BC, (hosted by the VWTC)
May 2 - 8	North American Occupational Safety & Health Week 2010
May 4-5	9th Annual Port/Government Interface 2010 Delta Ottawa Hotel & Suites
May 17 -21	International Tug & Salvage Conference Westin Bayshore Vancouver, BC

Hanjin Launches New e-Booking System

Peter T. Leach Apr 5, 2010 12:49PM
The Journal of Commerce Online



Hanjin Shipping introduced a new electronic booking system on Monday that it has been developing for the last two years in cooperation with Cyberlogitec and IBM GBS.

The system, which it calls ALPS (for Advanced Logistics Pathfinder System), is a Web-based system designed to maximize work efficiency by improving the work process of Hanjin's front offices with a variety of new functions that include the pre-checking of dangerous cargo and unifying booking and bill of lading numbers.

Hanjin said the new system can issue customized invoices and provide detailed information on container equipment.

The South Korean carrier said that despite the market crisis of the past two years, it has invested approximately \$35 million in developing the company-wide IT system in order to upgrade customer service.

The company said it will continue investing in its IT service to optimize its service.

In designing the new system, the company tried to create a system that would meet the needs of local shipping operations. "In consideration of the complications and delicacy of shipping operations, we tried to create a system that suits the characteristics of local environment," said In Mo Yang, a Hanjin vice president. "We are confident that ALPS will improve our work efficiency and enable us to provide better service to our customers," he said.

Day of Mourning Ceremony - April 28th 2010

Every year, WorkSafeBC, the BC Federation of Labour and the Business Council of BC co-host a public ceremony to remember workers who have lost their lives as a result of work – related accidents or occupational diseases.

For those that would like to attend this year's ceremony the location information is as follows:

Wednesday April 28th 2010
Vancouver Convention Center (south side)
1055 Canada Place.
The ceremony will begin at 10:30am.



www.dayofmourning.bc.ca

Agent Vessel Forecast Statistics for past 28 days: March 6, 2010 to April 3, 2010		
Number of Companies with working vessels during this period		26
Number of participating companies		22
Participation Levels :		
	Very High	10
	High	7
	Moderate	4
	Low	1
Average accuracy level		49.99%
Maximum accuracy level		100.00%
Minimum accuracy level		4.17%

Agent Participation and Accuracy Explanation			
Overall Agent Accuracy is based on the forecasting information supplied by the agent compared to the final state of the forecast as supplied by despatch. Agent participation is calculated based on the efforts of the agent in providing forecasting information via the Agent Vessel Forecast System. Participation is based on the comparison between the <u>number</u> of forecasted shifts as against the number of working shifts. Forecast accuracy is based on forecasted shifts and gangs <u>matching</u> with working shifts and gangs.			Percentage of working shifts forecasted
		Very High	More than 90%
		High	61% to 90%
		Moderate	31% to 60%
		Low	up to 30%

Vancouver Dispatch - Casual Employee Utilization March 28 - April 3, 2010)

Shift	Week Day	A Board		B Board		C Board		T Board		00 Board		Total Available	Total Dispatched	% Dispatched
		Available	Dispatched	Available	Dispatched	Available	Dispatched	Available	Dispatched	Available	Dispatched			
DAY	Sunday	20	6	3	1	2	1	1	0	3	0	29	8	28%
	Monday	82	61	47	22	27	7	30	8	16	10	202	108	53%
	Tuesday	37	37	7	7	10	10	5	5	2	1	61	60	98%
	Wednesday	49	46	25	3	13	1	10	0	4	2	101	52	51%
	Thursday	33	33	31	31	57	28	39	4	11	0	171	96	56%
	Friday	20	0	3	0	1	0	6	0			30	0	0%
GRAVEYARD	Saturday	46	25	11	6	8	1	8	0	4	0	77	32	42%
	Sunday	15	1	25	3	7	1	7	2	11	0	65	7	11%
	Monday	12	3	3	0	5	0	4	1	1	0	25	4	16%
	Tuesday	16	2	10	0	11	0	15	1	2	0	54	3	6%
	Wednesday	20	2	12	0	14	2	9	1	2	0	57	5	9%
	Thursday	33	33	36	18	34	1	18	0	5	0	126	52	41%
NIGHT	Friday	35	6	18	1	4	0	49	0	31	0	137	7	5%
	Saturday	6	3	2	0	1	0	3	0			12	3	25%
	Sunday	19	5	5	0	4	0	4	1	4	1	36	7	19%
	Monday	33	18	15	6	19	7	19	5	3	1	89	37	42%
	Tuesday	29	7	20	5	16	0	11	4	5	3	81	19	23%
	Wednesday	47	17	30	4	24	1	21	4	6	2	128	28	22%
Grand Total	Thursday	29	29	19	19	61	61	83	30	45	3	237	142	60%
	Friday	4	0	1	0	1	0	2	0			8	0	0%
	Saturday	12	1	5	1	6	0	3	0			26	2	8%
Grand Total		597	335	328	127	325	121	347	66	155	23	1752	672	38%

Vancouver Gang Stats
March 2010 (as at March 31/10)

Shift	2/3 Man Special				Basic				Dock Gantry				Grain			
	Req	All	Rec	Shrt	Req	All	Rec	Shrt	Req	All	Rec	Shrt	Req	All	Rec	Shrt
Shift 1 (0100)	11	11	11	0	17	17	17	0	67	67	67	0	73	73	73	0
Shift 2 (0800)	24	24	24	0	85	85	85	0	71	71	71	0	178	178	178	0
Shift 3 (1630)	19	19	19	0	56	56	56	0	72	72	72	0	132	132	132	0
Totals:	54	54	54	0	158	158	158	0	210	210	210	0	383	383	383	0
Percent of Shortage:	0.00%				0.00%				0.00%				0.00%			

Squamish Gang Stats
March 2010 (as at March 31/10)

Shift	2/3 Man Special				Basic				Dock Gantry			
	Req	All	Rec	Shrt	Req	All	Rec	Shrt	Req	All	Rec	Shrt
Shift 1 (0100)	0	0	0	0	2	2	2	0	0	0	0	0
Shift 2 (0800)	0	0	0	0	20	20	20	0	0	0	0	0
Shift 3 (1630)	0	0	0	0	17	17	17	0	0	0	0	0
Totals:	0	0	0	0	39	39	39	0	0	0	0	0
Percent of Shortage:	0.00%				0.00%				0.00%			

Vancouver Island Gang Stats
March 2010 (as at March 31/10)

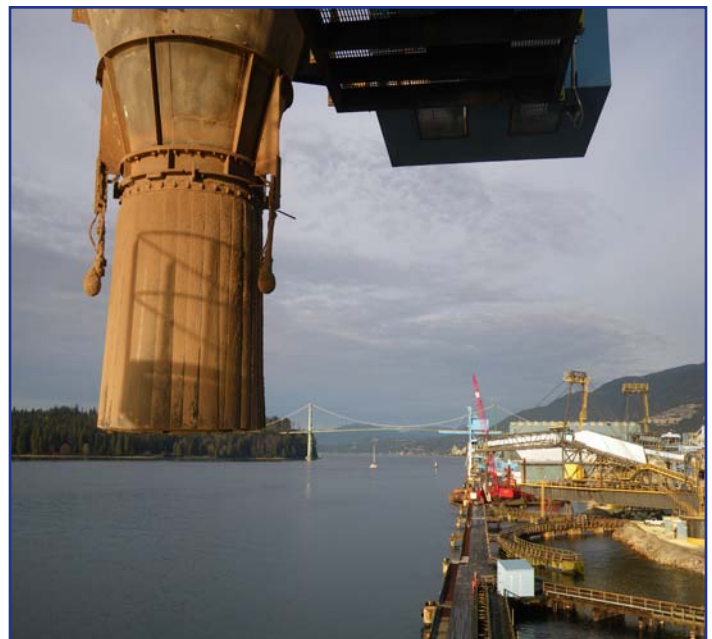
Shift	2/3 Man Special				Basic				Dock Gantry			
	Req	All	Rec	Shrt	Req	All	Rec	Shrt	Req	All	Rec	Shrt
Shift 1 (0100)	0	0	0	0	0	0	0	0	0	0	0	0
Shift 2 (0800)	0	0	0	0	105	105	105	0	0	0	0	0
Shift 3 (1630)	0	0	0	0	17	17	17	0	0	0	0	0
Totals:	0	0	0	0	122	122	122	0	0	0	0	0
Percent of Shortage:	0.00%				0.00%				0.00%			



Dispatch Shortage Stats for March 2010

Shortages at commencement and post dispatch, month-to-date March 31, 2010

0100 Shift					1630 Shift				
Rating	At	Shifts	Post	Shifts	Rating	At	Shifts	Post	Shifts
	Dispatch		Dispatch			Dispatch		Dispatch	
DOCK GANTRY	7	2	0	0	BULLDOZER (DOCK)	3	3	0	0
ELECTRICIAN (CERT)	14	12	5	5	BULLDOZER (SHIP)	1	1	0	0
FIBERCO TRUNK (B.O.)	3	3	0	0	CENT. CHECKER	2	1	0	0
H.D. MECH (CERT)	8	4	2	1	DOCK GANTRY	4	2	0	0
MILLWRIGHT (CERT)	11	7	1	1	ELECTRICIAN (CERT)	35	22	22	14
NEPTUNE TRUNK (B.O.)	1	1	0	0	F.E.L. (DOCK)	2	1	0	0
P.M. TRUNK (B.O.)	1	1	0	0	FIBERCO PUSHER	4	3	0	0
TOPSIDE	5	3	0	0	FIBERCO TRUNK (B.O.)	1	1	0	0
WHEAT SPECIALTY	2	2	0	0	H.D. MECH (CERT)	31	22	23	16
0800 Shift					HLT (WHITE DOT)	1	1	0	0
Rating	At	Shifts	Post	Shifts	LOCIE ENGINEER	1	1	0	0
	Dispatch		Dispatch		MILLWRIGHT (CERT)	9	5	5	3
BOMBARDIER	4	3	0	0	NEPTUNE TRUNK (B.O.)	2	2	0	0
CARPENTER (CERT)	3	3	1	1	SHIP GANTRY	3	2	0	0
CENT. CHECKER	1	1	0	0	SWITCHMAN (FIBERCO)	1	1	0	0
DOCK GANTRY	14	6	0	0	SWITCHMAN (ALL SITES)	2	2	0	0
ELECTRICIAN (CERT)	30	14	24	11	TOPSIDE	5	3	0	0
F.E.L. (DOCK)	1	1	0	0	V.W. TRUNK (B.O.)	4	1	1	1
FIBERCO TRUNK (B.O.)	4	2	1	1	VT CHECKER	2	1	0	0
H.D. MECH (UNCERT)	10	9	6	5	WELDER (CERT)	1	1	0	0
LABOURER (DOCK)	16	7	0	0	WHEAT SPECIALTY	5	4	0	0
LIFT TRUCK (DOCK)	3	2	0	0					
LOCIE ENGINEER	3	3	0	0					
MILLWRIGHT (CERT)	20	13	15	11					
NEPTUNE TRUNK (B.O.)	1	1	0	0					
P.M. BULK LIQUID OP	1	1	0	0					
SHIP GANTRY	1	1	0	0					
SIGNALMAN	1	1	0	0					
SWITCHMAN (ALL SITES)	2	2	0	0					
TOPSIDE	5	3	0	0					
TRACKMAN	3	2	1	1					
WELDER (CERT)	1	1	0	0					
WHEAT SPEC. PECO	1	1	0	0					
WHEAT SPECIALTY	11	9	0	0					

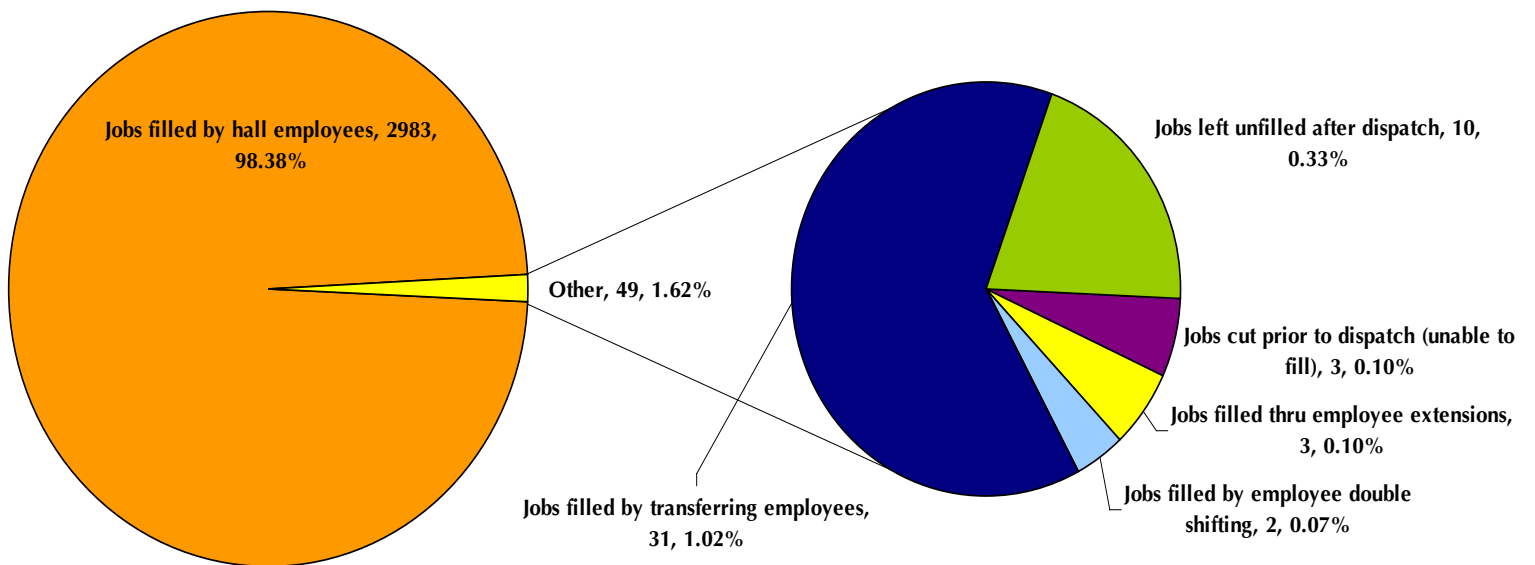


Dispatch Shortage Statistics:

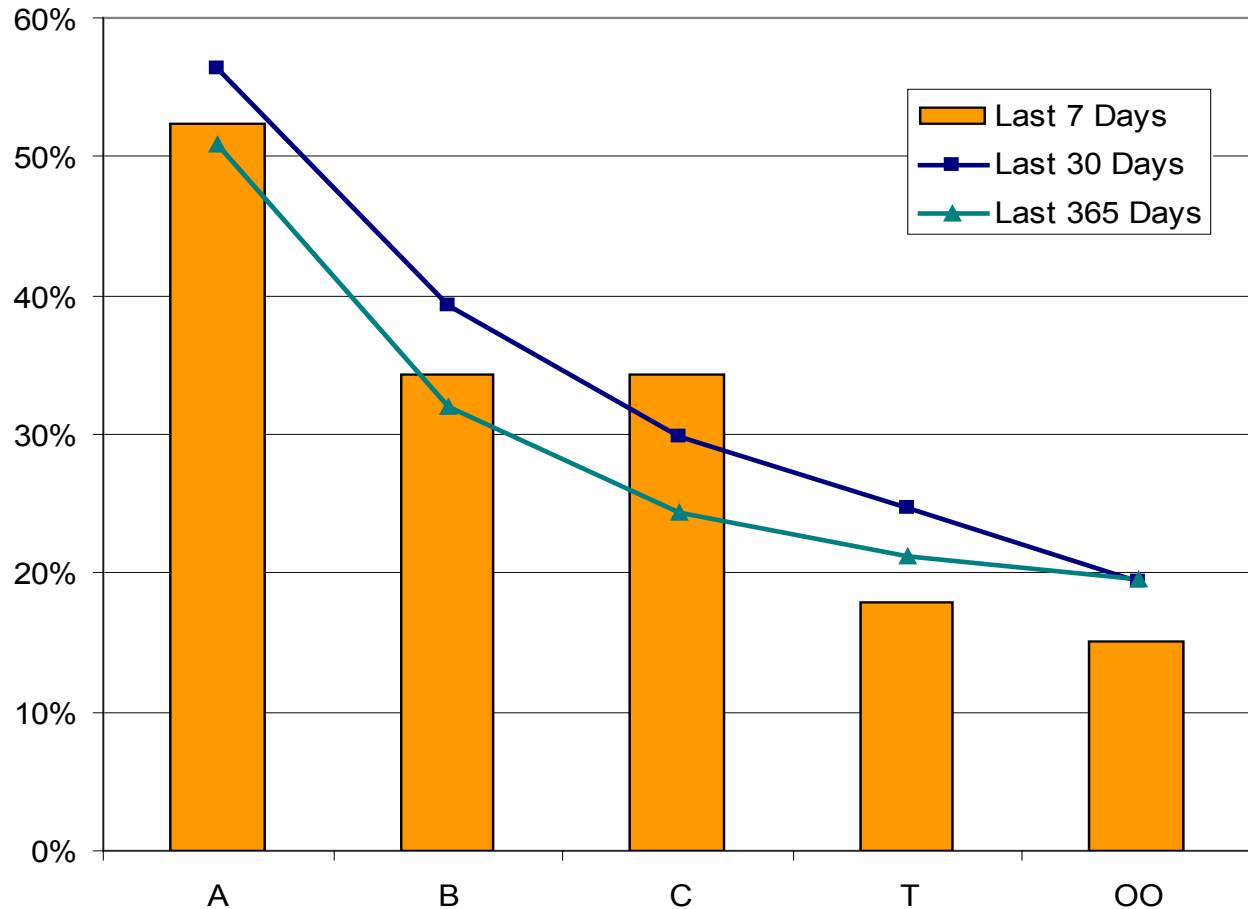
For the Period Sunday March 28, 2010 to Saturday April 3, 2010

JOB	Jobs cut prior to dispatch (unable to fill)	Jobs filled thru employee extensions	Jobs filled by employee double shifting	Jobs filled by local 502 employees	Jobs filled by transferring employees	Jobs left unfilled after dispatch	TOTAL
40 TON					1		1
40 TON & RACK					1		1
BULK OPERATOR					1		1
DOCK GANTRY		1			11		12
ELECTRICIAN			1		1	4	6
H.D. MECHANIC			1		2	5	8
HEAD CHKR		2			2		4
KOMATSU OP					2		2
LOCIE ENGINEER					2		2
SHIP GANTRY					3		3
SWITCHMAN					2		2
TRACKMAN						1	1
WHEAT MACHINE	1						1
WHEAT SPECIALTY	2				3		5
TOTAL	3	3	2		31	10	49

Explains how shortages were handled by Dispatch



Vancouver Casual Employee % Dispatched per Dispatch Board



Future BCMEA Meeting Dates:

Direct Employers Committee
Wednesday, April 7th 2010
9:30am - 11:30am
5th Floor Boardroom
349 Railway Steet

Finance & Audit Committee
Friday, April 16th 2010
9:30am - 11:30am
5th Floor Boardroom
349 Railway Steet

Direct Employers Committee
Wednesday, May 5th 2010
9:30AM - 11:30AM
5th Floor Boardroom
349 Railway Steet

Board of Directors Meeting
Tuesday, May 25th 2010
9:30AM - 11:30AM
5th Floor Boardroom
349 Railway St

Your Feedback:



Have something for the BCMEA Bulletin?

Send your comments or contributions to the Bulletin's Editor at editor@bcmea.com or (604) 694-2324.