

BCMEA BULLETIN: RELIABILITY AND PRODUCTIVITY AT WORK



BCMEA 2010 Membership Changes

Resignations

PacNord Agencies

Seabridge International

TTS Shipping

Name Change

Barwil Agencies to



Mergers

Anglo Canadian & Greer Shipping are now operating as
ACGI Shipping Inc.



Union Meeting Nights

Mainland Locals

Vancouver (500) March 17, 2010

New West. (502) March 17, 2010

Vancouver Island Local

Chemainus (508) March 8, 2010

Northern Local

Prince Rupert (505) March 16, 2010

Please be guided by the provisions of Article 15
in the Collective Agreement respecting working
restrictions and conditions on Union Meeting

In this issue:

Portsecure 20102

Monthly Statistics:

~Agent Vessel Forecast3

~Casual Employee3
Utilization

~Gang Stats4

~Dispatch Shortages5

Weekly Statistics:

~Dispatch Shortages6

~Vancouver Casual7
Dispatch

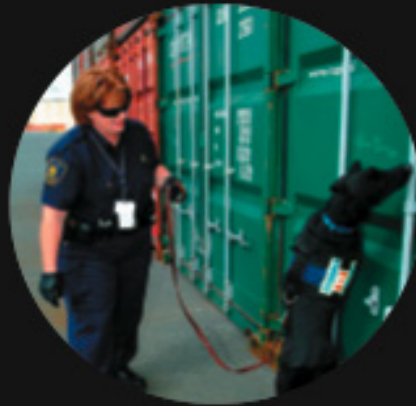
BCMEA Meeting Dates.....7



2010 PORTSECURE

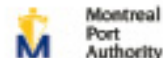
CANADIAN PORT & MARITIME SECURITY
CONFERENCE & EXPO

Bringing together port operators, government officials, security experts and leading vendors to assist port, security and transportation industries maximize awareness and information sharing critical to maritime security.



MAY 26 - 28, 2010 • FAIRMONT PACIFIC RIM • VANCOUVER, BC, CANADA
REGISTER NOW TO SECURE YOUR PLACE AT CANADA'S PREMIER PORT SECURITY CONFERENCE

SPONSORS



FOR INFORMATION ON EXHIBITING AT THE PORTSECURE TRADESHOW VISIT WWW.PORTSECURE.CA

Agent Vessel Forecast Statistics for past 28 days: January 30 - February 27, 2010		
Number of Companies with working vessels during this period		28
Number of participating companies		25
Participation Levels : Very High		13
High		10
Moderate		2
Low		0
Average accuracy level		52.95%
Maximum accuracy level		96.88%
Minimum accuracy level		16.67%

Agent Participation and Accuracy Explanation		
<p>Overall Agent Accuracy is based on the forecasting information supplied by the agent compared to the final state of the forecast as supplied by despatch. Agent participation is calculated based on the efforts of the agent in providing forecasting information via the Agent Vessel Forecast System. Participation is based on the comparison between the number of forecasted shifts as against the number of working shifts. Forecast accuracy is based on forecasted shifts and gangs matching with working shifts and gangs.</p>		Percentage of working shifts forecasted
	Very High	More than 90%
	High	61% to 90%
	Moderate	31% to 60%
	Low	up to 30%

Vancouver Dispatch - Casual Employee Utilization (Feb 21 - Feb 27, 2010)

Shift	Week Day	A Board		B Board		C Board		T Board		00 Board		Total Available	Total Dispatched	% Dispatched
		Available	Dispatched	Available	Dispatched	Available	Dispatched	Available	Dispatched	Available	Dispatched			
DAY	Sunday	35	7	11	1	2	0	3	0	5	3	56	11	20%
	Monday	60	60	23	23	15	12	14	8	10	8	122	111	91%
	Tuesday	32	24	7	1	6	1	6	0	6	4	57	30	53%
	Wednesday	50	43	18	5	10	2	5	1	5	2	88	53	60%
	Thursday	52	44	23	4	8	2	13	0	4	2	100	52	52%
	Friday	59	59	38	38	43	43	33	9	21	1	194	150	77%
	Saturday	54	54	33	33	47	47	41	40	46	32	221	206	93%
GRAVEYARD	Sunday	2	0	2	0	5	0	2	0	1	0	12	0	0%
	Monday	7	7	11	10	2	2	7	5	3	0	30	24	80%
	Tuesday	4	1	2	0	4	0	5	1	1	0	16	2	13%
	Wednesday	7	1	1	0	4	2	3	0			15	3	20%
	Thursday	9	9	20	1	15	2	13	0	5	1	62	13	21%
	Friday	7	7	9	6	12	0	11	1	5	0	44	14	32%
	Saturday	21	21	25	25	23	13	39	37	38	2	146	98	67%
NIGHT	Sunday	17	12	4	2	2	0	7	1	4	1	34	16	47%
	Monday	12	11	4	3	5	2	5	2	1	1	27	19	70%
	Tuesday	10	4	8	4	4	1	4	1	4	3	30	13	43%
	Wednesday	34	28	24	4	19	3	16	2	8	2	101	39	39%
	Thursday	44	44	29	23	13	0	14	2	7	1	107	70	65%
	Friday	27	27	12	12	21	21	46	33	37	5	143	98	69%
	Saturday	27	27	11	7	10	1	9	1	21	0	78	36	46%
Grand Total		570	490	315	202	270	154	296	144	232	68	1683	1058	63%

Vancouver Gang Stats
February 2010 (as at February 28/10)

Shift	2/3 Man Special				Basic				Dock Gantry				Grain			
	Req	All	Rec	Shrt	Req	All	Rec	Shrt	Req	All	Rec	Shrt	Req	All	Rec	Shrt
Shift 1 (0100)	11	11	11	0	6	6	6	0	66	66	66	0	63	63	63	0
Shift 2 (0800)	27	27	27	0	83	83	83	0	81	81	81	0	151	151	151	0
Shift 3 (1630)	18	18	18	0	51	51	51	0	76	76	76	0	114	114	114	0
Totals:	56	56	56	0	140	140	140	0	223	223	223	0	328	328	328	0
Percent of Shortage:	0.00%				0.00%				0.00%				0.00%			

Squamish Gang Stats
February 2010 (as at February 28/10)

Shift	2/3 Man Special				Basic				Dock Gantry			
	Req	All	Rec	Shrt	Req	All	Rec	Shrt	Req	All	Rec	Shrt
Shift 1 (0100)	0	0	0	0	2	2	2	0	0	0	0	0
Shift 2 (0800)	0	0	0	0	17	17	17	0	0	0	0	0
Shift 3 (1630)	0	0	0	0	12	12	12	0	0	0	0	0
Totals:	0	0	0	0	31	31	31	0	0	0	0	0
Percent of Shortage:	0.00%				0.00%				0.00%			

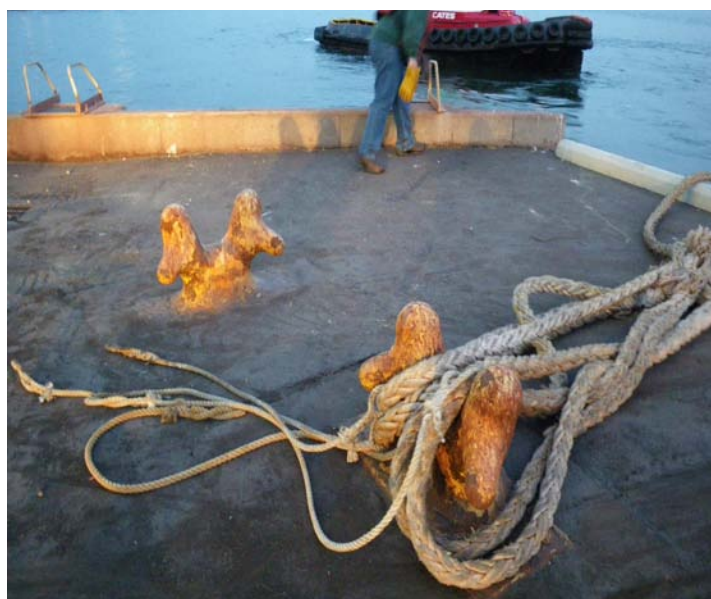
Vancouver Island Gang Stats
February 2010 (as at February 28/10)

Shift	2/3 Man Special				Basic				Dock Gantry			
	Req	All	Rec	Shrt	Req	All	Rec	Shrt	Req	All	Rec	Shrt
Shift 1 (0100)	0	0	0	0	5	5	5	0	0	0	0	0
Shift 2 (0800)	0	0	0	0	46	46	46	0	0	0	0	0
Shift 3 (1630)	0	0	0	0	22	22	22	0	0	0	0	0
Totals:	0	0	0	0	73	73	73	0	0	0	0	0
Percent of Shortage:	0.00%				0.00%				0.00%			

Dispatch Shortage Stats for February 2010

Shortages at commencement and post dispatch, month-to-date February 2010

0100 Shift					1630 Shift				
Rating	At	Shifts	Post	Shifts	Rating	At	Shifts	Post	Shifts
	Dispatch		Dispatch			Dispatch		Dispatch	
DOCK GANTRY	4	2	0	0	BOMBARDIER	1	1	0	0
ELECTRICIAN (CERT)	1	1	0	0	CENT. CHECKER	2	2	0	0
H.D. MECH (CERT)	15	8	8	5	DOCK GANTRY	2	2	0	0
KOMATSU OP. (N)	1	1	0	0	ELECTRICIAN (CERT)	17	14	5	5
LOCIE ENGINEER	4	2	0	0	F.E.L. (DOCK)	4	2	0	0
MILLWRIGHT (CERT)	11	7	7	4	FIBERCO PUSHER	1	1	0	0
P.M. BULK LIQUID OP.	1	1	0	0	H.D. MECH (CERT)	34	26	27	22
SWITCHMAN (NEPT)	1	1	0	0	HLT (WHITE DOT)	2	2	1	1
SWITCHMAN (ALL SITES)	3	3	0	0	LABOURER (SHIP)	8	1	0	0
TOPSIDE	9	5	0	0	LOCIE ENGINEER	2	1	0	0
WHEAT SPEC> PECO	1	1	0	0	MILLWRIGHT (CERT)	4	4	2	2
WHEAT SPECIALTY	6	6	0	0	RED DOG CRANE OP.	2	1	0	0
0800 Shift					SWITCHMAN (NEPT)	3	1	0	0
Rating	At	Shifts	Post	Shifts	SWITCHMAN (ALL SITES)	3	2	0	0
	Dispatch		Dispatch		TOPSIDE	7	5	0	0
BULLDOZER (DOCK)	1	1	0	0	V.W. ADVISOR	1	1	0	0
CARPENTER (CERT)	3	3	3	3	WELDER (CERT)	1	1	0	0
CENT. CHECKER	2	2	0	0	WHEAT SPECIALTY	4	3	0	0
DOCK GANTRY	7	5	0	0					
ELECTRICIAN (CERT)	11	9	10	8					
FIBERCO TRUNK (B.O.)	1	1	0	0					
H.D. MECH (CERT)	43	31	32	22					
H.D. MECH (UNCERT)	2	1	1	1					
LOCIE ENGINEER	3	2	0	0					
MILLWRIGHT (CERT)	23	17	20	15					
PLUMBER (CERT)	1	1	1	1					
SHIP GANTRY	7	5	0	0					
SPLICER	1	1	1	1					
SWITCHMAN (FIBERCO)	1	1	0	0					
SWITCHMAN (V.W.)	1	1	1	1					
SWITCHMAN (ALL SITES)	5	3	0	0					
TOPSIDE	10	6	0	0					
WELDER (CERT)	5	5	3	3					
WHEAT SPECIALTY	3	1	0	0					

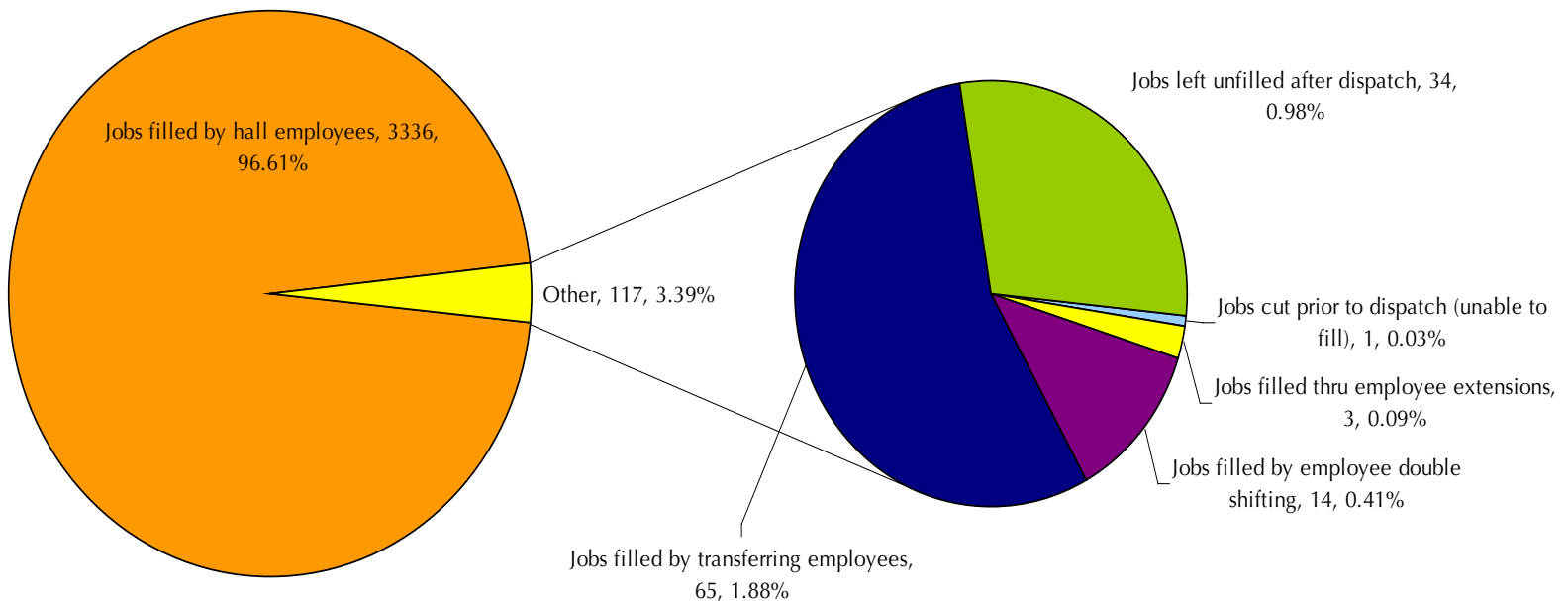


Dispatch Shortage Statistics:

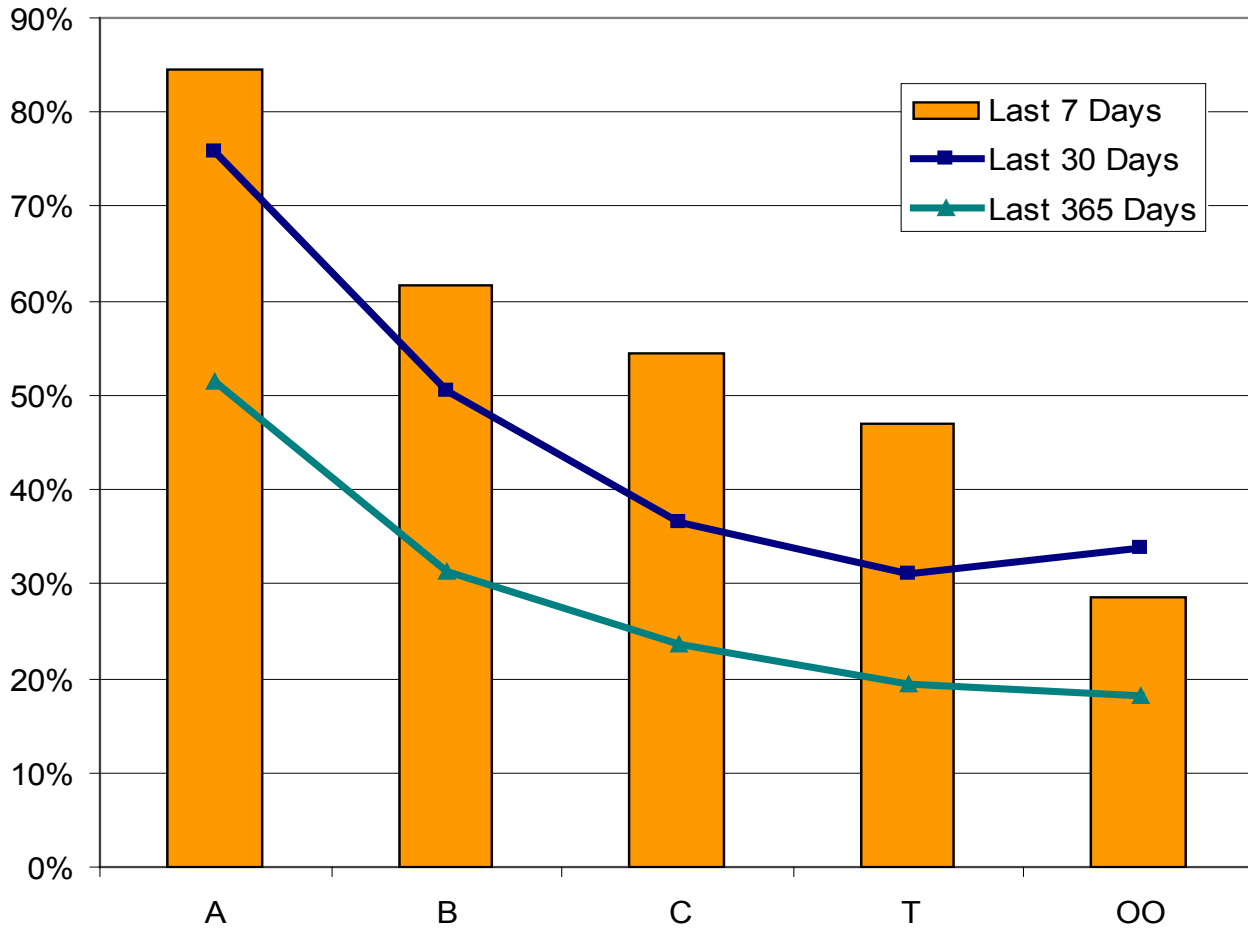
For the Period Sunday February 21, 2010 to Saturday February 27, 2010

Job	Jobs cut prior to dispatch (unable to fill)	Jobs filled thru employee extensions	Jobs filled by employee double shifting	Jobs filled by local 502 employees	Jobs filled by transferring employees	Jobs left unfilled after dispatch	TOTAL
40 TON					1		1
40 TON & RACK					1		1
BULK OPERATOR					9		9
CARPENTER						1	1
CHECKER (DOCK)					3	2	5
DOCK GANTRY			1		6		7
DRIVER					1		1
ELECTRICIAN	1		7		5	9	22
F.E.L.					2		2
FIRST AID						1	1
H.D. MECHANIC			1		2	18	21
HATCH TENDER		1			6		7
HEAD CHKR		2	1			1	4
HT SIGNALS					1		1
KOMATSU OP					1		1
LOCIE ENGINEER			1		8		9
MILLWRIGHT			1		6	1	8
PLUMBER						1	1
RED DOG CRANE					1		1
RUBBER TIRE GTY					3		3
SWITCHMAN			1		7		8
WELDER			1				1
WHEAT SPECIALTY					2		2
TOTAL	1	3	14		65	34	117

Explains how shortages were handled by Dispatch



Vancouver Casual Employee % Dispatched per Dispatch Board



Future BCMEA Meeting Dates:

Ship Owners Committee
Thursday, Mar. 4th 2010
9:00am - 11:00am
Pan Pacific Hotel
999 Canada Place

Board of Directors Meeting
Wednesday, Mar. 31st 2010
2:00pm - 4:00pm
Terminal City Club
837 West Hastings Street

Finance & Audit Committee
Tuesday, Mar. 23rd 2010
9:30AM - 11:30AM
5th Floor Boardroom
349 Railway Steet

Direct Employers Committee
Wednesday, April 7th 2010
9:30AM - 11:30AM
5th Floor Boardroom
349 Railway Steet

Your Feedback:



Have something for the
BCMEA Bulletin?

Send your comments
or contributions to the
Bulletin's Editor at
editor@bcmea.com or
(604) 694-2324.