

# BCMEA BULLETIN: RELIABILITY AND PRODUCTIVITY AT WORK

February 25, 2010

## High Risk period coming for Asian Gypsy Moth

The high risk period for the entry of vessels into Canadian ports will commence on March 1st. Earlier this week the Ship & Port Operations Committee met with the Canadian Food Inspection Agency to discuss inspections for this season. CFIA has indicated that the D-95-03 (Asian Gypsy Moth – Plant Protection Policy for Marine Vessels) will be amended in March.

The Asian gypsy moth is an invasive insect. It poses a significant threat to Canada’s forests, biodiversity and economy. These moths can feed on a wide range of economically important tree species, as well as other important plants.



**Asian Gypsy Moth** (*Lymantria Dispar L.*)

Ships and cargo—including containers and used vehicles can carry the egg masses of these moths to Canada from China, Japan, North Korea, South Korea and Russia (Far East region).

In the right conditions, caterpillars hatch from these egg masses and they can go great distances with the wind to find food.

All marine vessels entering Canada are subject to inspection at any time of year to verify freedom from Asian Gypsy Moth.

[www.inspection.gc.ca](http://www.inspection.gc.ca)

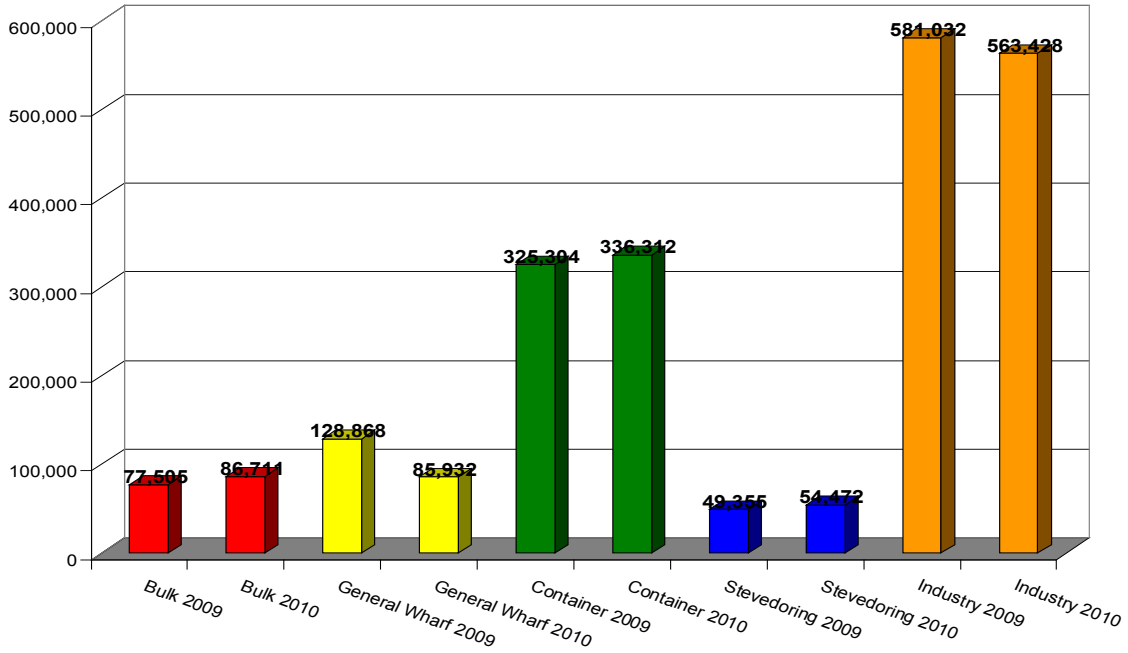
### SUMMARY OF ENTRY REQUIREMENTS

MARINE VESSELS	RISK PERIOD IN CANADA	QUARANTINE ACTION
<b>High Risk Marine Vessels (vessels that have called on high risk ports as specified in Appendix 2)</b>	March 1 to October 15	All high risk marine vessels with Phytosanitary Certificates or Pre-departure Inspection Certificates are subject to inspection for the presence of AGM on arrival to Canada ports. Vessels without valid certification will be held at designated off-shore anchorages for CFIA inspection.
	October 16, to February 28 (or 29)	Marine vessels may enter, but may be inspected at berth for the presence of AGM. Pre-departure Inspection Certificates or Phytosanitary Certificates are not required.
	All Year	Marine vessels may request AGM inspection at any time of the year in order to prepare for future re-entry to Canada. The vessel must not return to an infested port during the high risk period.
<b>Other Marine Vessels</b>	All Year	Any marine vessels may be inspected for the presence of AGM. If any living stage is found, the marine vessel will be subject to the same procedures as described for high-risk marine vessels.

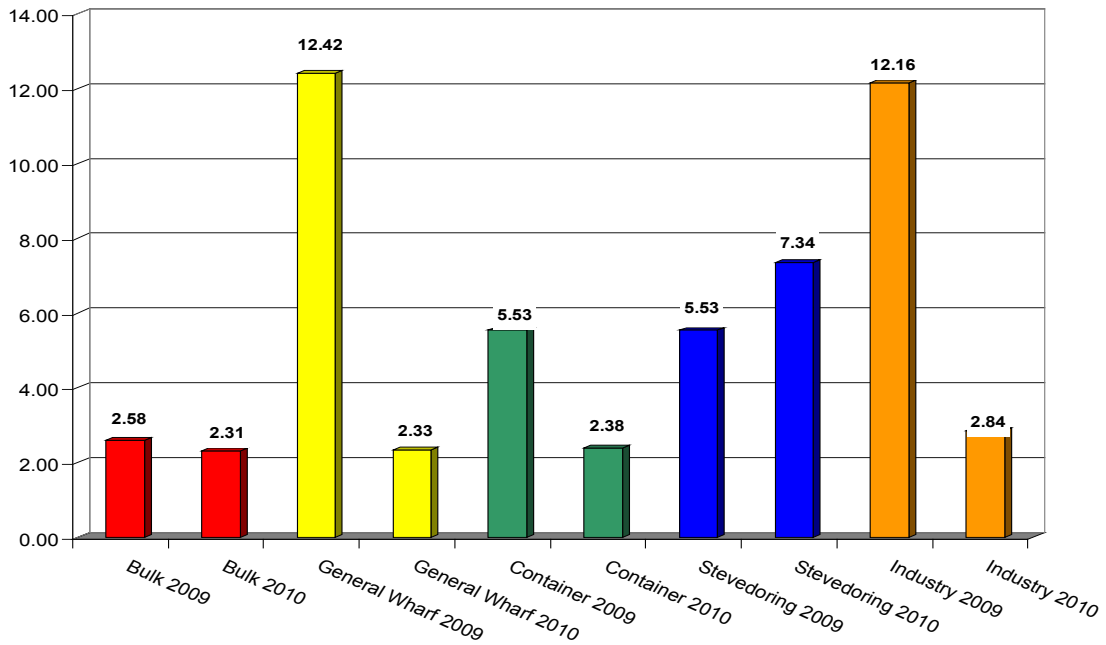


# Monthly Health & Safety Statistics: January

Sectoral Hours Year - January 2009 vs. January 2010

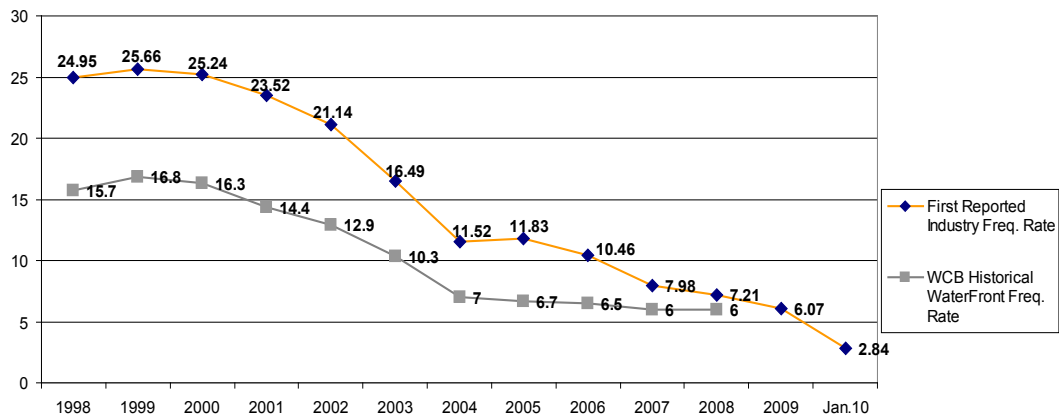


Sectoral Frequencies Year to Date to January 2009 vs. January 2010  
Claims First Report



# Monthly Health & Safety Statistics: January

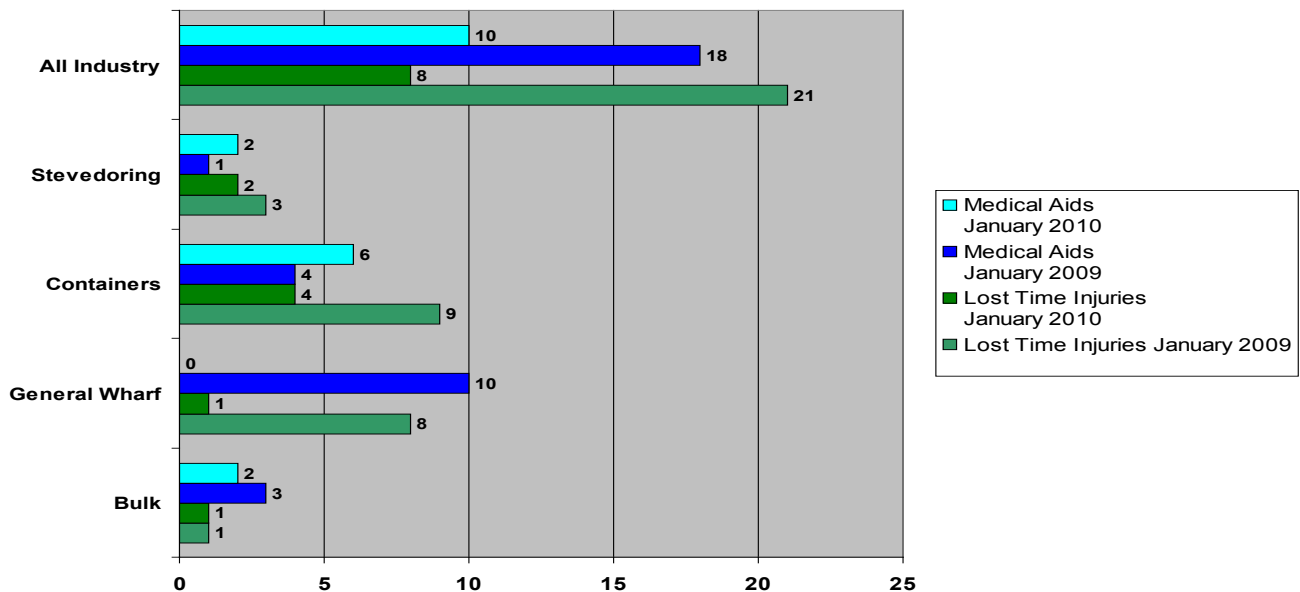
## Accident Frequency Year to Date to End of January 2010 Longshore and Foremen



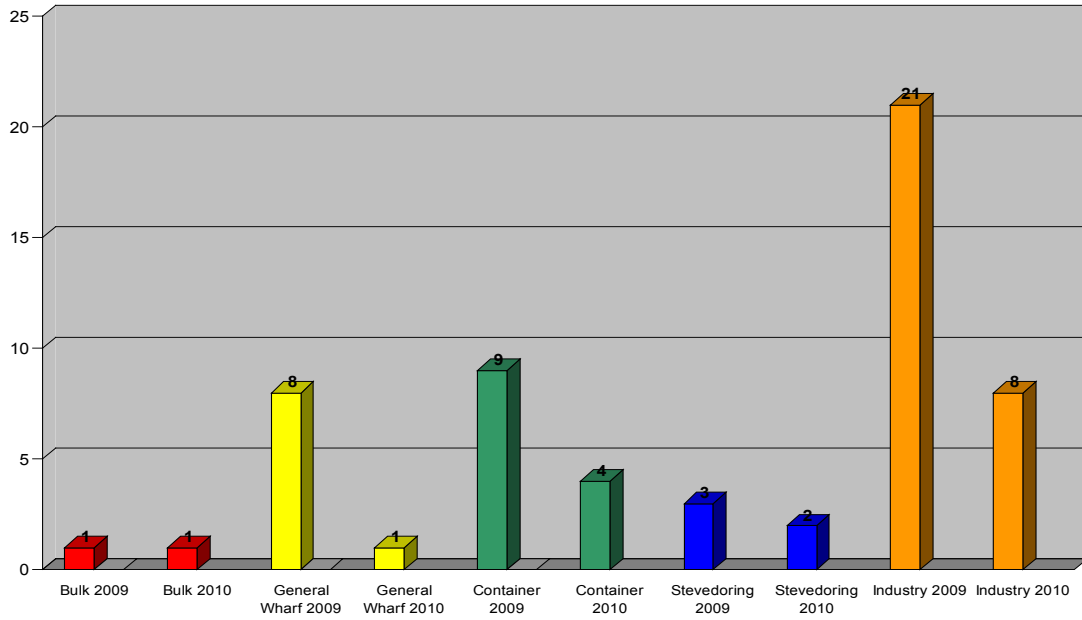
Top line represents LTIs as reported by member companies. Second line represents true frequency rate, 2008 represents full year frequency 2010 represents frequency year to date to January 2010.

## Lost Time Injuries and Medical Aid 2009 - 2010

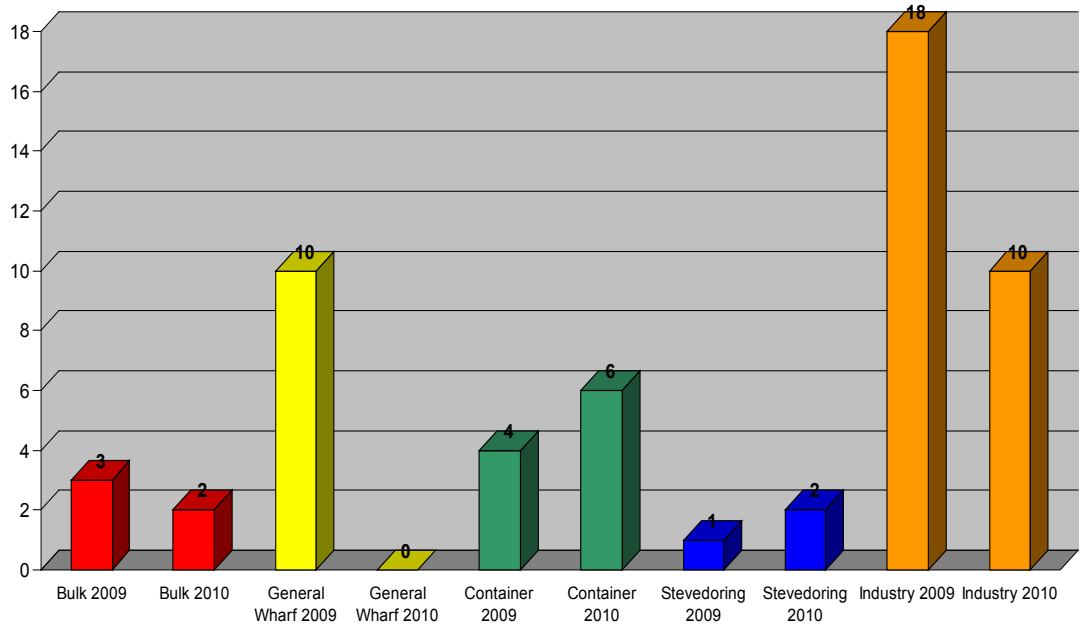
### Claims First Reported



## Lost Time Injuries by Sector - Claims First Reported January 2009 vs. January 2010



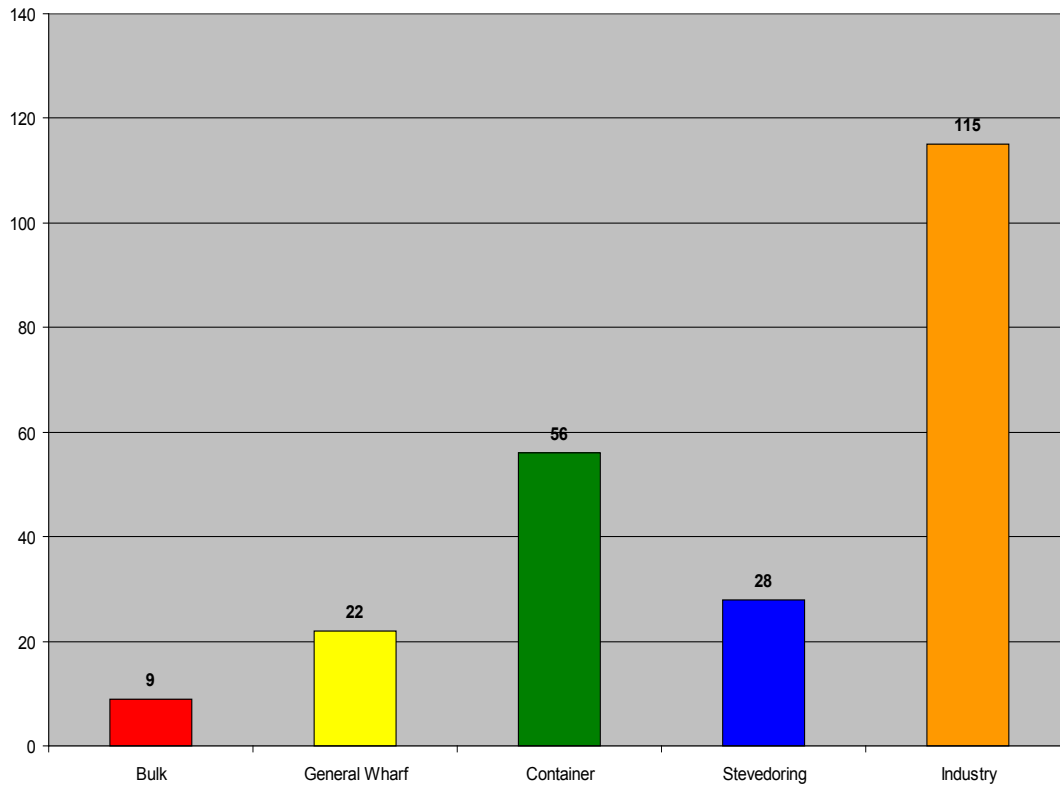
## Medical Aids by Sector January 2009 vs. January 2010



---

# Monthly Health & Safety Statistics: January

**First Aid Incidents - January 2010**



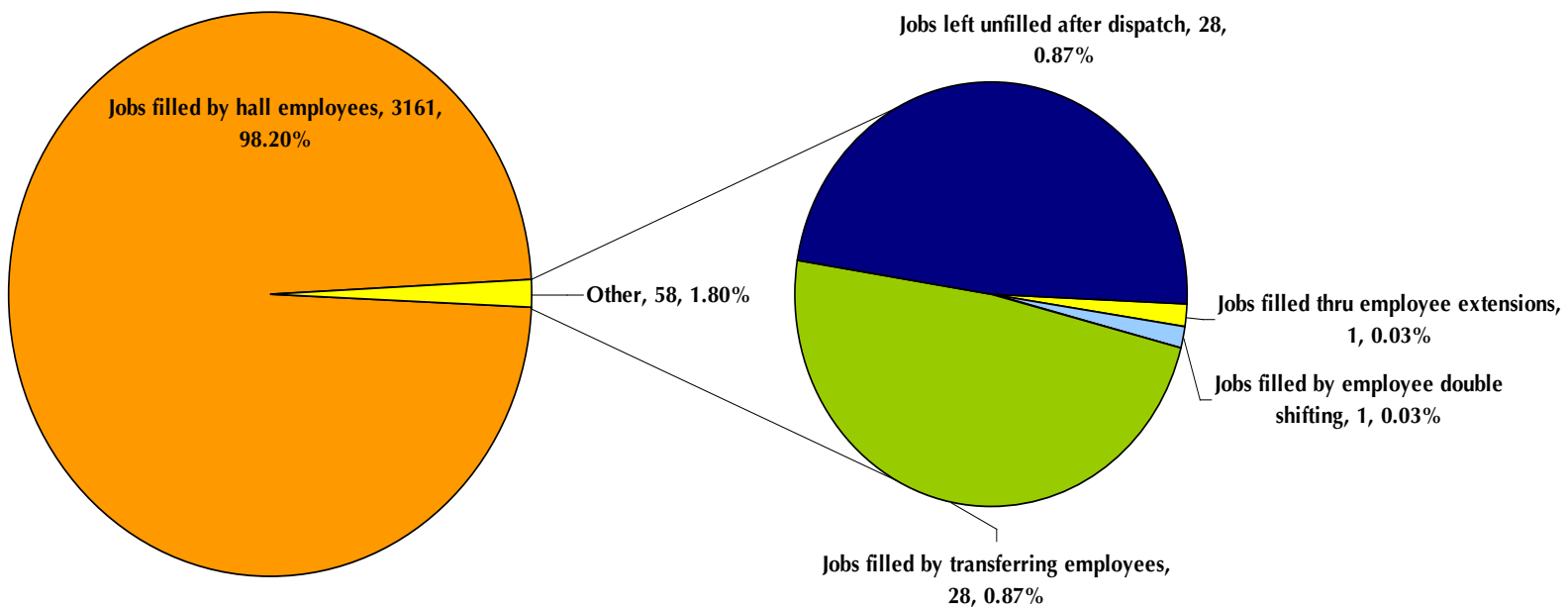
*For more information on the monthly Health & Safety graphs please contact Suki Hache, [shache@bcmea.com](mailto:shache@bcmea.com)*

# Dispatch Shortage Statistics:

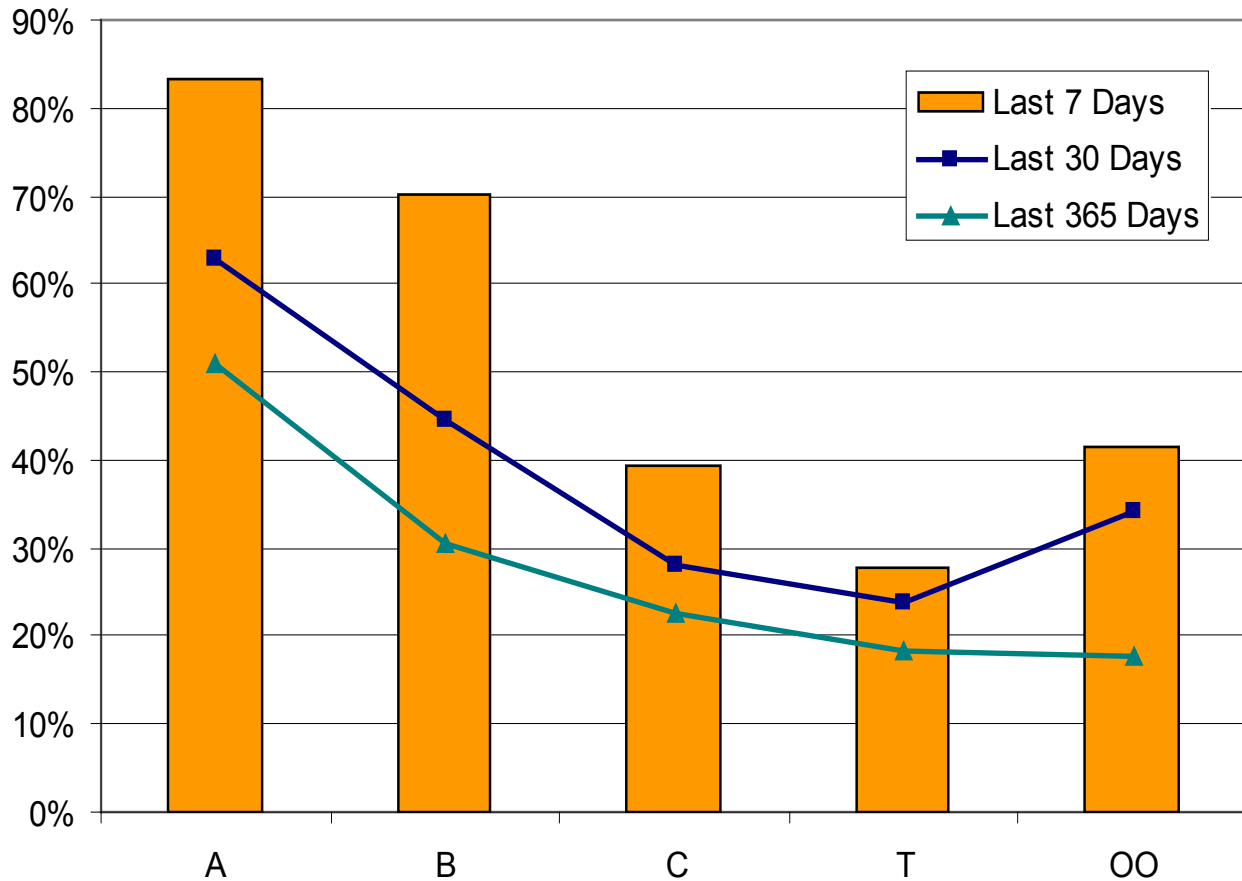
For the Period Sunday February 14, 2010 to Saturday February 20, 2010

JOB	Jobs cut prior to dispatch (unable to fill)	Jobs filled thru employee extensions	Jobs filled by employee double shifting	Jobs filled by local 502 employees	Jobs filled by transferring employees	Jobs left unfilled after dispatch	TOTAL
40 TON					1		1
40 TON & RACK					1		1
CARPENTER						2	2
DOCK GANTRY					2		2
ELECTRICIAN						5	5
F.E.L.					1		1
H.D. MECHANIC						13	13
HATCH TENDER					5		5
HEAD CHKR		1					1
HT SIGNALS					1		1
LIQUID BULK					1		1
MILLWRIGHT			1		1	5	7
PUSHER					1		1
RUBBER TIRE GTY					3		3
SWITCHMAN					2		2
TRACKMAN						1	1
WELDER					1	2	3
WHEAT MACHINE					1		1
WHEAT SPECIALTY					5		5
WINCH DRIVER					2		2
<b>TOTAL</b>		<b>1</b>	<b>1</b>		<b>28</b>	<b>28</b>	<b>58</b>

*Explains how shortages were handled by Dispatch*



## Vancouver Casual Employee % Dispatched per Dispatch Board



### Future BCMEA Meeting Dates:

**Ship Owners Committee**  
Thursday, Mar. 4th 2010  
9:00am - 11:00am  
Pan Pacific Hotel  
999 Canada Place

**Finance & Audit Committee**  
Tuesday, Mar. 23rd 2010  
9:30AM - 11:30AM  
5th Floor Boardroom  
349 Railway Steet

**Board of Directors Meeting**  
Wednesday, Mar. 31st 2010  
2:00pm - 4:00pm  
Terminal City Club  
837 West Hastings Street

**Direct Employers Committee**  
Wednesday, April 7th 2010  
9:30AM - 11:30AM  
5th Floor Boardroom  
349 Railway Steet

### Your Feedback:



Have something for the BCMEA Bulletin?

Send your comments or contributions to the Bulletin's Editor at [editor@bcmea.com](mailto:editor@bcmea.com) or (604) 694-2324.