

February 2, 2010

# BCMEA BULLETIN: RELIABILITY AND PRODUCTIVITY AT WORK



Canadian Transportation Agency  
www.cta.gc.ca



## Subscription Service

### Extension of Deadline for Consultation Submissions

#### Re: Consultation on the Proposed Modifications to the Canadian Transportation Agency Guidelines Respecting Coasting Trade License Applications

On November 18, 2009, the Agency initiated consultations soliciting comments as part of its review of the proposed modifications to the Guidelines Respecting Coasting Trade License Applications.

At that time, the deadline for stakeholders to provide their written submissions on the Guidelines was established as December 18, 2009. Parties then had until January 7, 2010 to submit any final comments.

Please be advised that **the deadline for participating in the consultation process and to provide written submissions is now extended to February 26, 2010**. All comments received will be posted on the Agency's Web site. At the close of this period, all stakeholders will then have until **March 8, 2010** to submit final comments in reply to any comments filed during the consultation, including those submissions filed during the initial consultation period. These comments will also be posted on the Agency's Website.

For further information regarding the consultation and the process to follow for submitting comments, visit the Agency's Web site at [www.cta.gc.ca/eng/consultations-marine](http://www.cta.gc.ca/eng/consultations-marine).

### Union Meeting Nights:

#### Mainland Locals

Vancouver (500) February 10, 2010  
New West. (502) February 10, 2010

#### Vancouver Island Local

Chemainus (508) February 8, 2010

#### Northern Local

Prince Rupert (505) February 9, 2010

Please be guided by the provisions of Article 15 in the Collective Agreement respecting working restrictions and conditions on Union Meeting Nights.

### In this issue:

Longshore Vacation Pay.....	2
Industry Calendar.....	2
<b>Monthly Statistics:</b>	
~Agent Vessel Forecast .....	3
~Casual Employee .....	3
Utilization	
~Gang Stats .....	4
~Dispatch Shortages .....	5
<b>Weekly Statistics:</b>	
Dispatch Shortages.....	6
Vancouver Casual.....	7
Dispatch	
Future BCMEA.....	7
Meeting Dates	





**NOTICE RE: LONGSHORE 2010 VACATION PAY DISTRIBUTION**

Please be advised that longshore vacation pay cheques will be distributed on Thursday, February 4, 2009. The Pay window at the Vancouver Dispatch will have the cheques available on Thursday and Friday from 6:00 am to 6:00 pm.

Should you have any questions, please do not hesitate to call the MDC Vancouver office at 604-688-0013.

**Industry Calendar of Events:**

- |                |  |
|----------------|--|
| February 12-28 | <b>Vancouver 2010 Winter Olympic Games</b>   |
| March 1-2      | <b>10th Annual Trans-Pacific Maritime Conference</b><br>Long Beach, CA                     |
| March 2-3      | <b>Conference Board of Canada - Toronto, ON</b><br>Strategic Supply Chain Management Forum |
| March 11       | <b>Vancouver Transportation Club AGM</b>   |
| April 21       | <b>COS BUSINESS OF SHIPPING COURSE</b><br>Prince Rupert, BC                                |
| April 29 & 30  | <b>WESTAC Annual Meeting</b><br>Regina Inn Hotel & Conference Centre, SK.                  |
| May 26 - 28    | <b>Portsecure Conference &amp; Expo</b><br>Fairmont Pacific Rim, Vancouver BC              |

<b>Agent Vessel Forecast Statistics for past 28 days: January 2 - 30, 2010</b>		
Number of Companies with working vessels during this period		<b>25</b>
Number of participating companies		<b>24</b>
Participation Levels :		Very High
		High
		Moderate
		Low
Average accuracy level		<b>55.82%</b>
Maximum accuracy level		<b>86.81%</b>
Minimum accuracy level		<b>25.00%</b>

<b>Agent Participation and Accuracy Explanation</b>		
Overall Agent Accuracy is based on the forecasting information supplied by the agent compared to the final state of the forecast as supplied by despatch. Agent participation is calculated based on the efforts of the agent in providing forecasting information via the Agent Vessel Forecast System. Participation is based on the comparison between the <u>number</u> of forecasted shifts as against the number of working shifts. Forecast accuracy is based on forecasted shifts and gangs <u>matching</u> with working shifts and gangs.		Percentage of working shifts forecasted
	Very High	<b>More than 90%</b>
	High	<b>61% to 90%</b>
	Moderate	<b>31% to 60%</b>
	Low	<b>up to 30%</b>

### Vancouver Dispatch - Casual Employee Utilization (January 24-30, 2010)

Shift	Week Day	A Board		B Board		C Board		T Board		00 Board		Total Available	Total Dispatched	% Dispatched
		Available	Dispatched	Available	Dispatched	Available	Dispatched	Available	Dispatched	Available	Dispatched			
DAY	Sunday	54	33	13	1			3	0	1	1	71	35	49%
	Monday	98	98	49	16	50	4	46	4	40	8	283	130	46%
	Tuesday	84	84	46	41	43	8	38	0	15	1	226	134	59%
	Wednesday	41	41	12	8	8	3	16	4	8	0	85	56	66%
	Thursday	58	58	44	30	34	9	25	0	13	5	174	102	59%
	Friday	37	37	12	12	26	26	67	67	21	11	163	153	94%
	Saturday	51	27	15	2	5	0	5	0	4	0	80	29	36%
GRAVEYARD	Sunday	14	12	9	9	4	0	7	0	4	1	38	22	58%
	Monday	13	2	18	3	12	0	17	0	4	0	64	5	8%
	Tuesday	12	0	6	1	2	0	5	0	2	0	27	1	4%
	Wednesday	17	12	17	3	34	0	23	1	10	0	101	16	16%
	Thursday	6	0	3	1			8	0	4	1	21	2	10%
	Friday	21	19	32	31	64	49	69	0	20	3	206	102	50%
	Saturday	15	14	7	2	11	2	16	4	6	1	55	23	42%
NIGHT	Sunday	50	42	24	3	19	2	20	1	7	1	120	49	41%
	Monday	11	0	7	0	5	1	6	0	9	2	38	3	8%
	Tuesday	32	30	20	5	34	2	27	1	13	0	126	38	30%
	Wednesday	6	2	4	1	3	1	8	3	8	1	29	8	28%
	Thursday	61	59	33	3	62	3	49	1	16	2	221	68	31%
	Friday	45	45	10	10	10	10	35	35	44	11	144	111	77%
	Saturday	13	2	2	0	3	0	3	0	3	1	24	3	13%
<b>Grand Total</b>		<b>739</b>	<b>617</b>	<b>383</b>	<b>182</b>	<b>429</b>	<b>120</b>	<b>493</b>	<b>121</b>	<b>252</b>	<b>50</b>	<b>2296</b>	<b>1090</b>	<b>47%</b>

**Vancouver Gang Stats**  
**January 2010 (as at January 31/10)**

Shift	2/3 Man Special				Basic				Dock Gantry				Grain			
	Req	All	Rec	Shrt	Req	All	Rec	Shrt	Req	All	Rec	Shrt	Req	All	Rec	Shrt
Shift 1 (0100)	11	11	11	0	6	6	6	0	73	73	73	0	50	50	50	0
Shift 2 (0800)	31	31	31	0	64	64	64	0	81	81	81	0	145	145	145	0
Shift 3 (1630)	34	34	34	0	39	39	39	0	76	76	76	0	113	113	113	0
<b>Totals:</b>	<b>76</b>	<b>76</b>	<b>76</b>	<b>0</b>	<b>109</b>	<b>109</b>	<b>109</b>	<b>0</b>	<b>230</b>	<b>230</b>	<b>230</b>	<b>0</b>	<b>308</b>	<b>308</b>	<b>308</b>	<b>0</b>
<b>Percent of Shortage:</b>	<b>0.00%</b>				<b>0.00%</b>				<b>0.00%</b>				<b>0.00%</b>			

**Squamish Gang Stats**  
**January 2010 (as at January 31/10)**

Shift	2/3 Man Special				Basic				Dock Gantry			
	Req	All	Rec	Shrt	Req	All	Rec	Shrt	Req	All	Rec	Shrt
Shift 1 (0100)	0	0	0	0	2	2	2	0	0	0	0	0
Shift 2 (0800)	0	0	0	0	11	11	11	0	0	0	0	0
Shift 3 (1630)	0	0	0	0	4	4	4	0	0	0	0	0
<b>Totals:</b>	<b>0</b>	<b>0</b>	<b>0</b>	<b>0</b>	<b>17</b>	<b>17</b>	<b>17</b>	<b>0</b>	<b>0</b>	<b>0</b>	<b>0</b>	<b>0</b>
<b>Percent of Shortage:</b>	<b>0.00%</b>				<b>0.00%</b>				<b>0.00%</b>			

**Vancouver Island Gang Stats**  
**January 2010 (as at January 31/10)**

Shift	2/3 Man Special				Basic				Dock Gantry			
	Req	All	Rec	Shrt	Req	All	Rec	Shrt	Req	All	Rec	Shrt
Shift 1 (0100)	0	0	0	0	0	0	0	0	0	0	0	0
Shift 2 (0800)	0	0	0	0	86	86	86	0	0	0	0	0
Shift 3 (1630)	0	0	0	0	21	21	21	0	0	0	0	0
<b>Totals:</b>	<b>0</b>	<b>0</b>	<b>0</b>	<b>0</b>	<b>107</b>	<b>107</b>	<b>107</b>	<b>0</b>	<b>0</b>	<b>0</b>	<b>0</b>	<b>0</b>
<b>Percent of Shortage:</b>	<b>0.00%</b>				<b>0.00%</b>				<b>0.00%</b>			

# Dispatch Shortage Stats for January 2010

Shortages at commencement and post dispatch, month-to-date January 31, 2010

0100 Shift					0800 Shift				
Rating	At Dispatch	Shifts	Post Dispatch	Shifts	Rating	At Dispatch	Shifts	Post Dispatch	Shifts
CENT. CHECKER	2	2	0	0	BACKHOE OP	1	1	0	0
DOCK GANTRY	4	2	0	0	BULLDOZER (DOCK)	3	3	0	0
ELECTRICIAN (CERT)	5	4	4	3	CARPENTER (CERT)	1	1	1	1
H.D. MECH (CERT)	9	3	7	3	CENT. CHECKER	2	2	0	0
LOCIE ENGINEER	1	1	0	0	DOCK GANTRY	5	3	0	0
MILLWRIGHT (CERT)	5	5	1	1	ELECTRICIAN (CERT)	1	1	0	0
NEPTUNE TRUNK (B.O.)	3	1	0	0	FIBERCO TRUNK (B.O.)	2	1	0	0
P.M. BULK LIQUID OP.	2	1	0	0	H.D. MECH (CERT)	9	8	6	6
TOPSIDE	3	2	0	0	KOMATSU OP. (N)	1	1	0	0
1630 Shift					NEPTUNE TRUNK (B.O.)	1	1	0	0
Rating	At Dispatch	Shifts	Post Dispatch	Shifts	PLUMBER (CERT)	1	1	1	1
BOMBARDIER	1	1	0	0	TOPSIDE	5	3	0	0
BULLDOZER (DOCK)	3	2	1	1	TRACKMAN	3	2	3	2
BULLDOZER (SHIP)	3	1	0	0	V.W. TRUNK (B.O.)	4	1	0	0
DOCK GANTRY	5	3	0	0	WHEAT SPEC. PECO	2	1	0	0
ELECTRICIAN (CERT)	8	8	2	2	WHEAT SPECIALITY	1	1	0	0
FIBERCO PUSHER	1	1	0	0					
H.D. MECH (CERT)	15	14	7	7					
KOMATSU OP. (N)	1	1	0	0					
LOCIE ENGINEER	2	2	1	1					
MILLWRIGHT (CERT)	4	4	1	1					
SWITCHMAN (NEPT)	2	1	0	0					
SWITCHMAN (ALL SITES)	4	3	0	0					
TOPSIDE	6	3	0	0					
WELDER (CERT)	2	2	0	0					
WHEAT SPECIALTY	1	1	0	0					

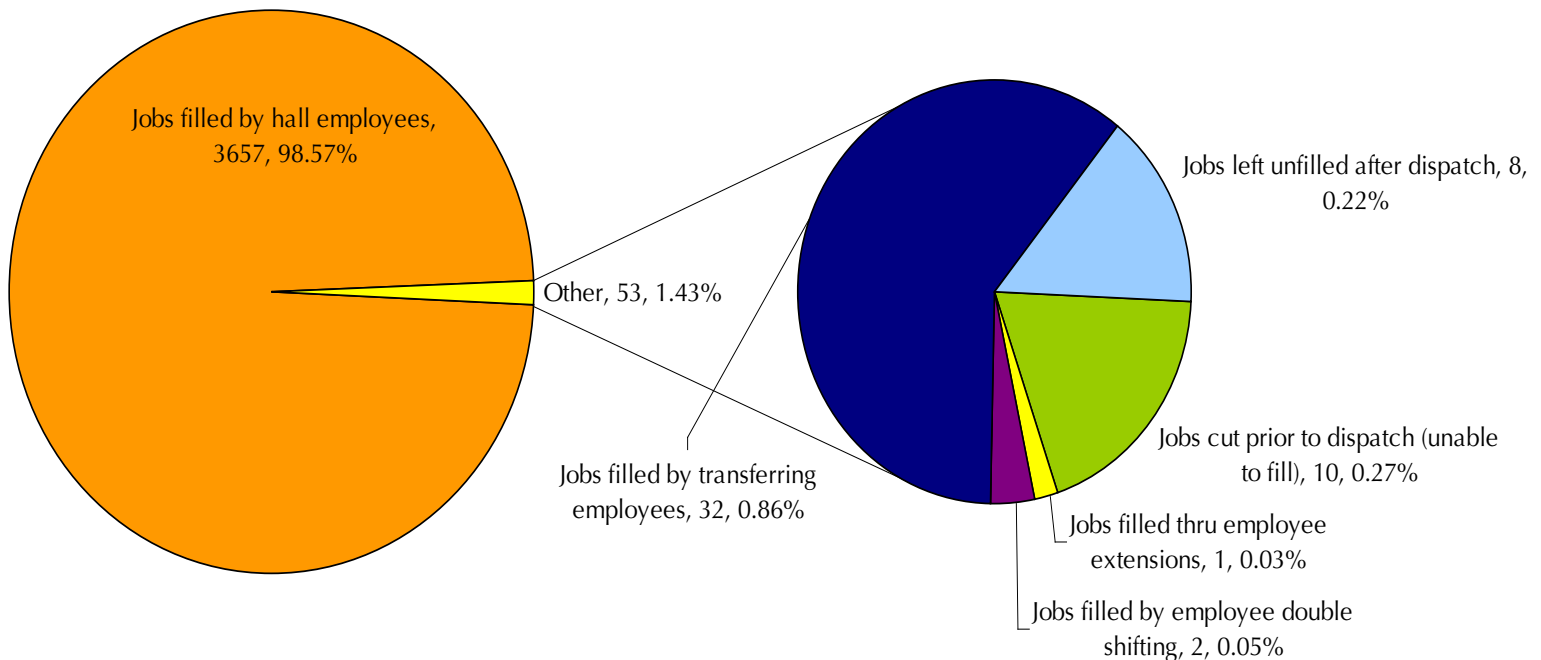


# Dispatch Shortage Statistics:

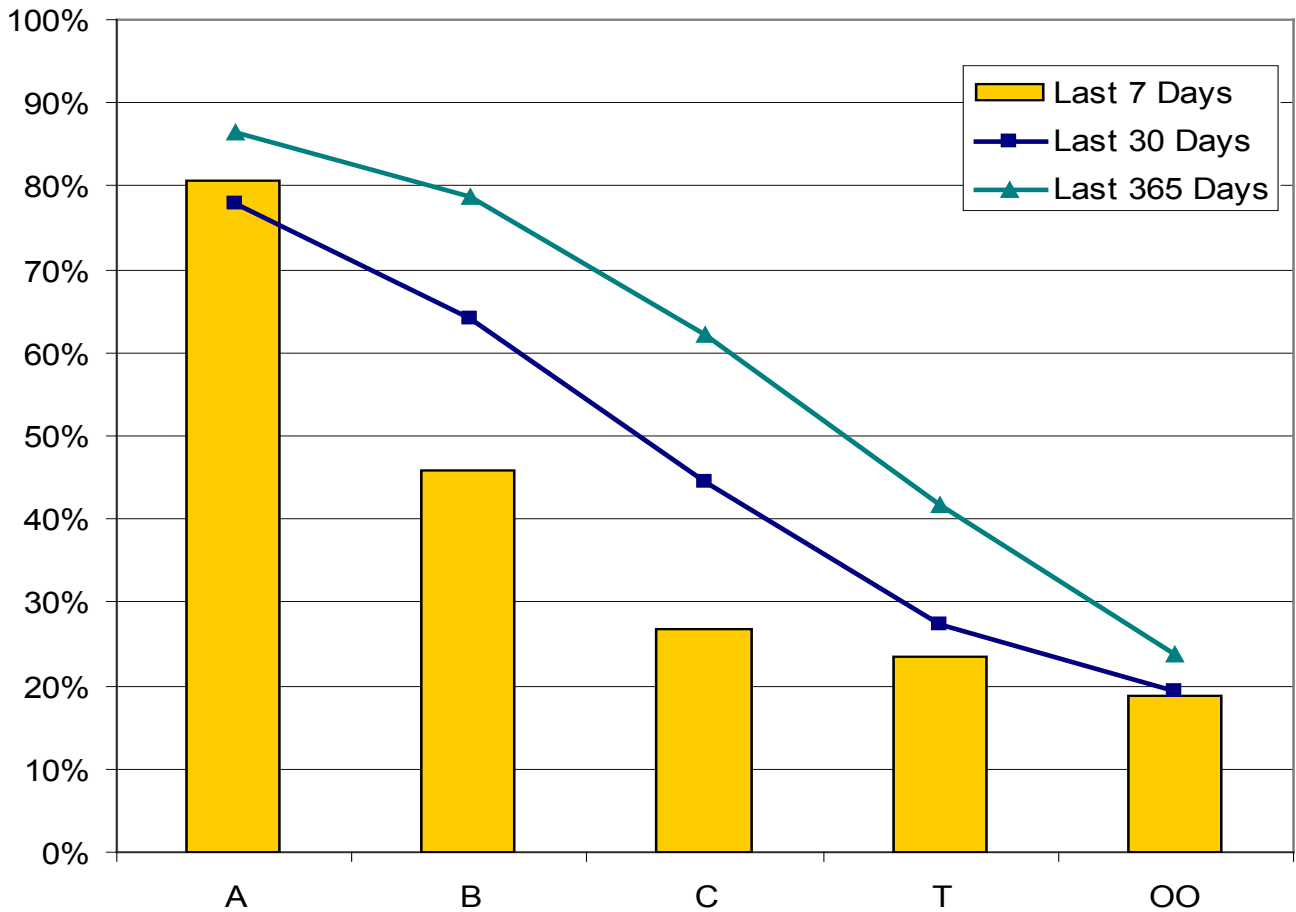
For the Period Sunday January 24, 2010 to Saturday January 30, 2010

JOB	Jobs cut prior to dispatch (unable to fill)	Jobs filled thru employee extensions	Jobs filled by employee double shifting	Jobs filled by local 502 employees	Jobs filled by transferring employees	Jobs left unfilled after dispatch	TOTAL
40 TON	2						2
40 TON & RACK					1		1
AUTO MECH					1	1	2
BULK OPERATOR	4				4		8
CHECKER (DOCK)					1		1
DOCK GANTRY					9		9
DRIVER					2		2
DRIVER(SHIP)					1		1
ELECTRICIAN		1				1	2
F.E.L.					1		1
H.D. MECHANIC						5	5
HEAD CHKR					2		2
HT SIGNALS					1		1
MEN						1	1
MILLWRIGHT			2				2
RACK & S/HOIST					1		1
RUBBER TIRE GTY	3				3		6
SHEDMEN	1						1
SHIP GANTRY					1		1
SWITCHMAN					3		3
WHEAT SPECIALTY					1		1
<b>TOTAL</b>	<b>10</b>	<b>1</b>	<b>2</b>		<b>32</b>	<b>8</b>	<b>53</b>

*Explains how shortages were handled by Dispatch*



## Vancouver Casual Employee % Dispatched per Dispatch Board



### Future BCMEA Meeting Dates:

<p><b>Direct Employers Committee</b> Wednesday, Feb. 3rd, 2010 9:30am - 12:00am 5th Floor Boardroom 349 Railway Street</p>	<p><b>Board of Directors Meeting</b> Wednesday, Feb. 17th 2010 9:30am - 11:30am 5th Floor Boardroom 349 Railway Street</p>
--	--

<p><b>Finance &amp; Audit Committee</b> Wednesday, Feb. 10th, 2010 9:30am - 11:30am 5th Floor Boardroom 349 Railway Street</p>	<p><b>Board of Directors Meeting</b> Wednesday, Mar. 31st 2010 2:00pm - 4:00pm Terminal City Club 837 West Hastings Street</p>
--	--

### Your Feedback:



Have something for the BCMEA Bulletin?

Send your comments or contributions to the Bulletin's Editor at [editor@bcmea.com](mailto:editor@bcmea.com) or (604) 694-2324.