

December 15, 2009



BCMEA BULLETIN:

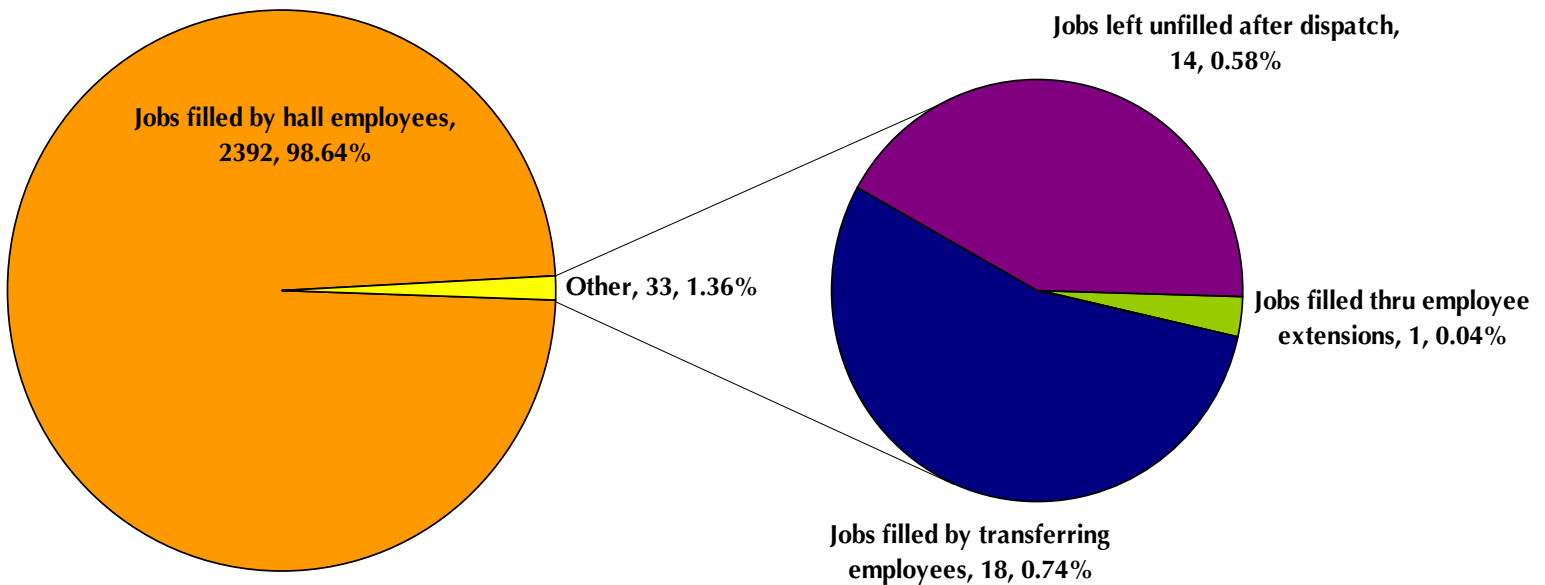
RELIABILITY AND PRODUCTIVITY AT WORK

Dispatch Shortage Statistics:

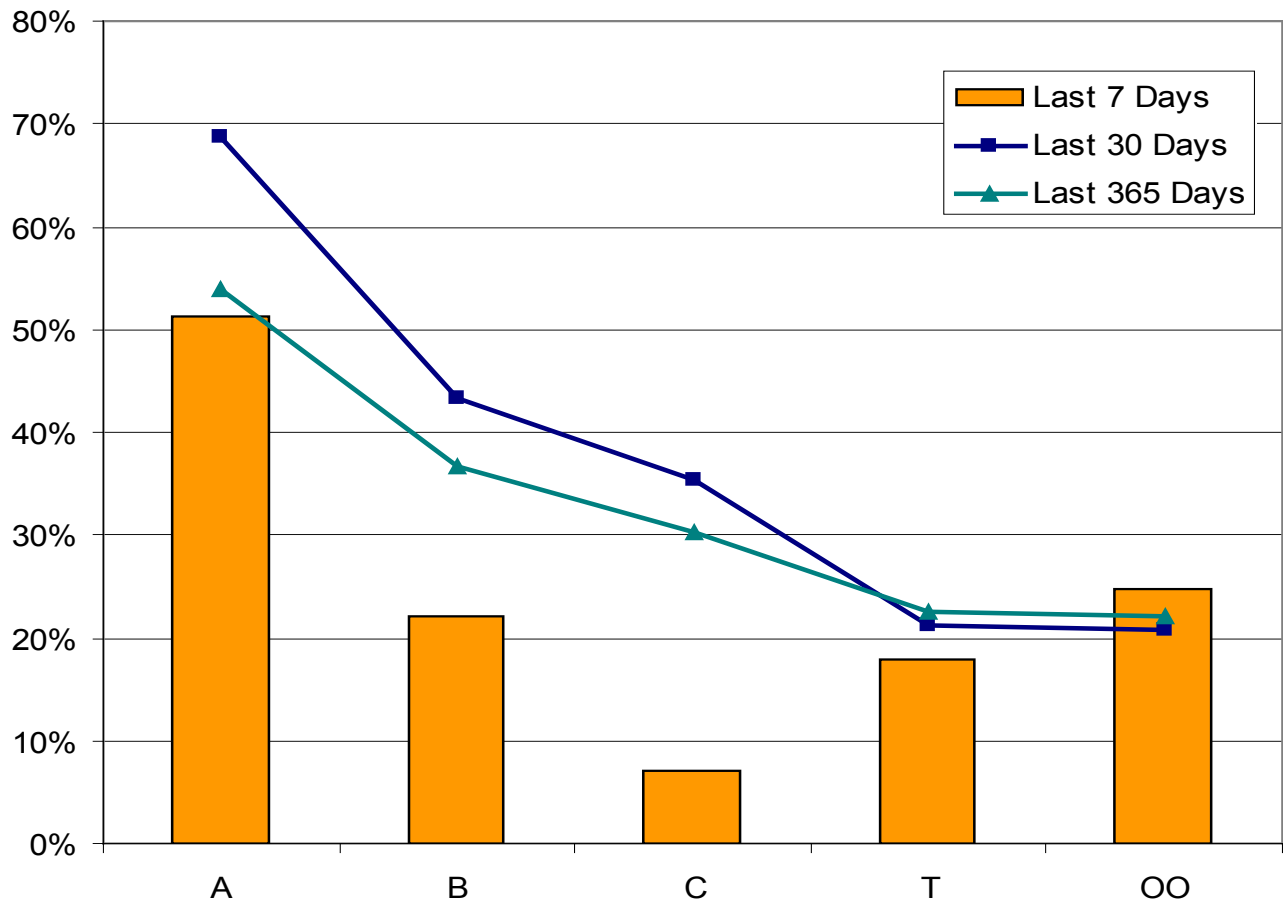
For the Period Sunday December 6, 2009 to Saturday December 12, 2009

JOB	Jobs cut prior to dispatch (unable to fill)	Jobs filled thru employee extensions	Jobs filled by employee double shifting	Jobs filled by local 502 employees	Jobs filled by transferring employees	Jobs left unfilled after dispatch	TOTAL
BOMBADIER					2		2
BULK OPERATOR					1		1
ELECTRICIAN					2	3	5
H.D. MECHANIC					1	8	9
HEAD CHKR		1					1
HT SIGNALS					1		1
KOMATSU OP					1		1
LOCIE ENGINEER					2		2
MILLWRIGHT					3	3	6
RUBBER TIRE GTY					1		1
SWITCHMAN					2		2
WHEAT SPECIALTY					2		2
TOTAL		1			18	14	33

Explains how shortages were handled by Dispatch



Vancouver Casual Employee % Dispatched per Dispatch Board



**PORT METRO
vancouver**

Effective December 15, 2009, Port Metro Vancouver will be relocating their seven New Westminster employees to the downtown Vancouver office. All correspondence should be directed to the Vancouver address:

**Port Metro Vancouver
100 The Pointe
999 Canada Place
Vancouver, BC V6C 3T4**

Future BCMEA Meeting Dates:

Board of Directors Meeting
Wednesday, Dec. 16, 2009
9:30 AM - 10:30 AM
5th Floor Boardroom
349 Railway Street

Finance & Audit Committee
Friday, Dec. 18, 2009
9:30 AM - 11:00 AM
5th Floor Boardroom
349 Railway Street



Have something for the
BCMEA Bulletin?

Send your comments
or contributions to the
Bulletin's Editor at
editor@bcmea.com or
(604) 694-2324.