

December 8, 2009

# BCMEA BULLETIN: RELIABILITY AND PRODUCTIVITY AT WORK

British Columbia Maritime Employers Association

## Container Fleet Growth Hits 10-Year Low

The Journal of Commerce Online - News Story Dec 8, 2009

Lay-ups rise, reaching one in eight vessels, may go higher

The world container ship fleet grew at the slowest rate in ten years in 2009 as nearly one out of eight vessels is laid-up.

The cellular containership fleet is expected to grow by only 6.1 percent in 2009, according to Alphaliner -- the slowest growth rate recorded by the Paris-based research group since 2000.

At the same time, 11.7 percent of the world fleet is idled, a level that's set to grow in the coming months as capacity growth outstrips cargo demand.

Fleet growth peaked at 16.1 percent in 2006 before easing to 13.9 percent in 2007 and 13.2 percent in 2008.

Deliveries in the first eleven months of 2009 totaled 247 ships with a combined capacity of 986,663 20-foot equivalent units, according to Alphaliner.

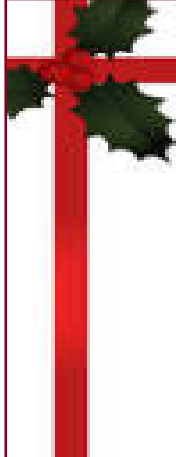
A further 95,000 TEUs is expected to be delivered in December, taking total deliveries to 1.08 million TEUs. This is significantly lower than the 1.85 million TEUs of new ships projected at the beginning of the year,

largely due to delivery deferrals.

Ship owners engaged in record scrapping of older tonnage as well. This trend will continue into 2010, making it difficult to accurately forecast fleet growth, Alphaliner said.

Based on current delivery schedules, 1.84 million TEUs are due to be delivered through 2010, equal to annual growth of 14 percent. But if scrapping next year matches the demolition rate in 2009 this would remove around 350,000 TEUs and cut growth to 11.4 percent.

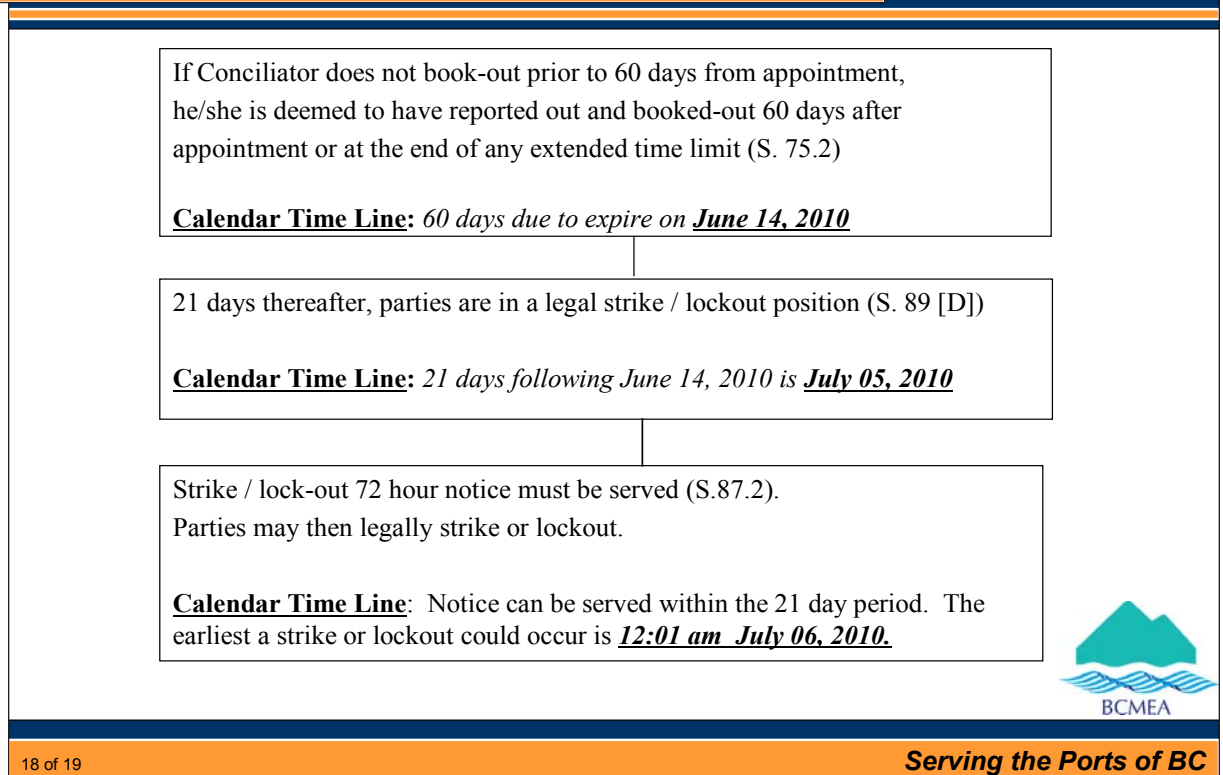
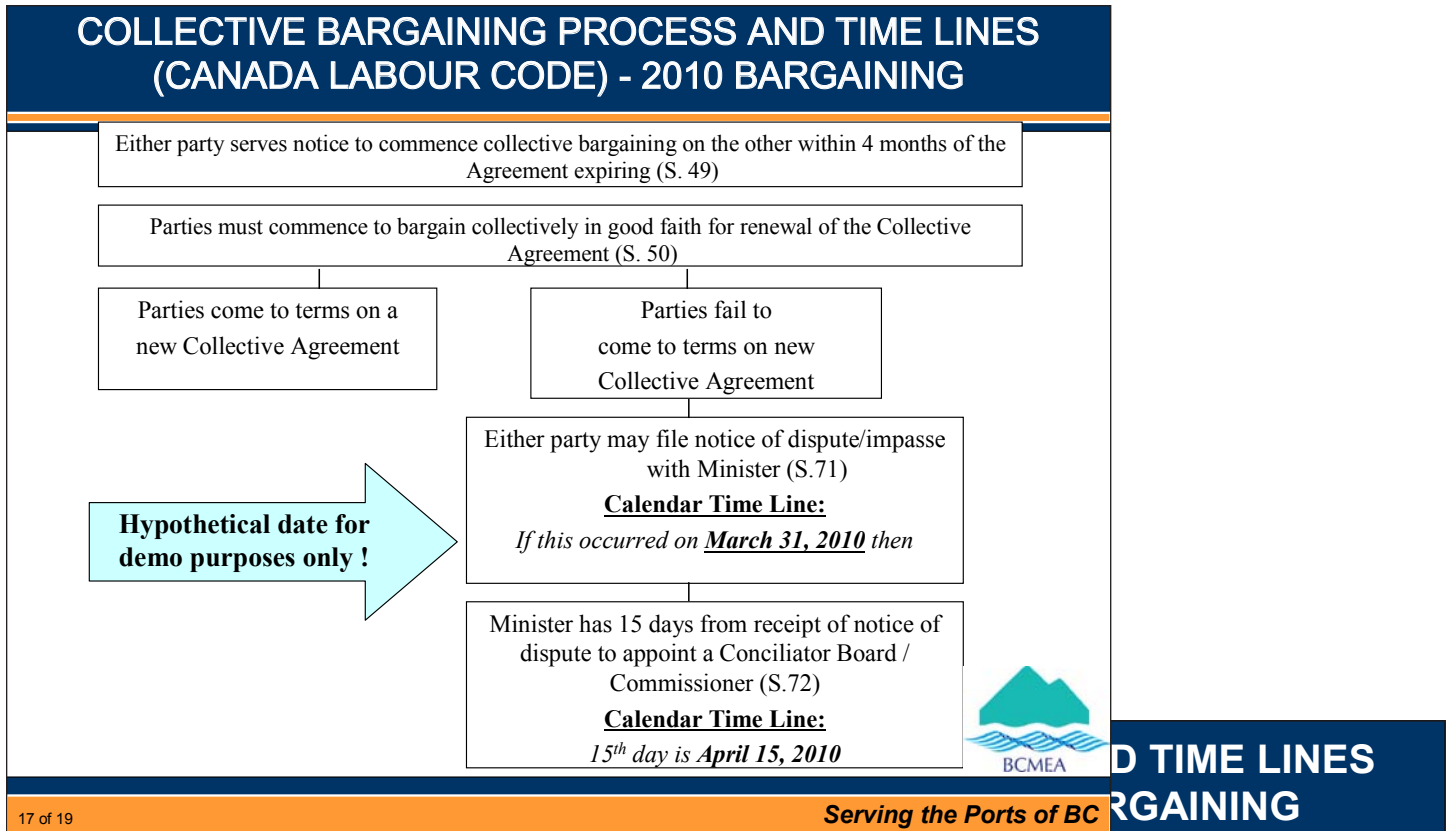
"With delivery deferrals and heavy slippage expected to continue next year, the 2010 fleet capacity growth rate could fall to half of what is currently projected," Alphaliner concluded.

	
BCMEA PMV .....	2
Presentation-Part 5	
Weekly Statistics:.....	3
Dispatch Shortages	
Vancouver Casual.....	4
Dispatch	
Union Meeting .....	4
Nights	



# BCMEA Presentation to PMV Stakeholders-Part 5

**\*\*Please note the dates below are for example purposes only.**

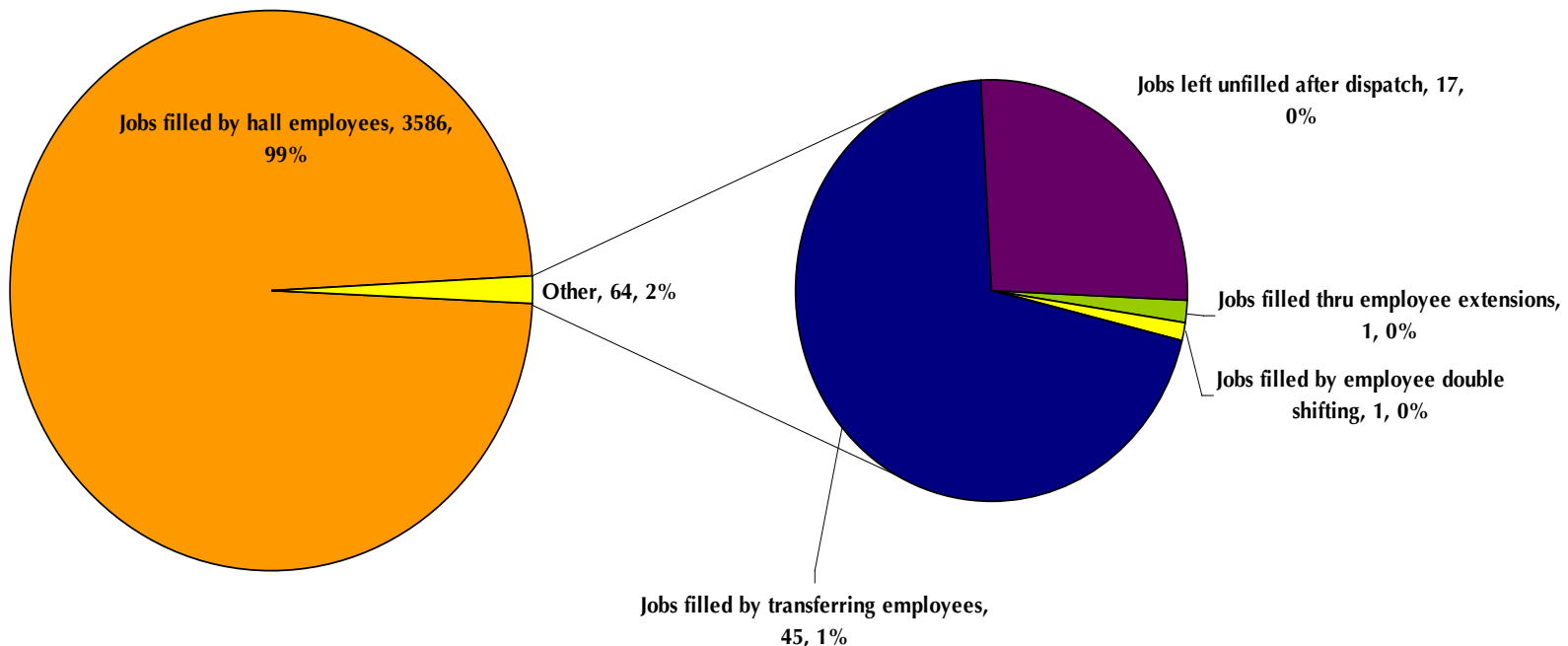


# Dispatch Shortage Statistics:

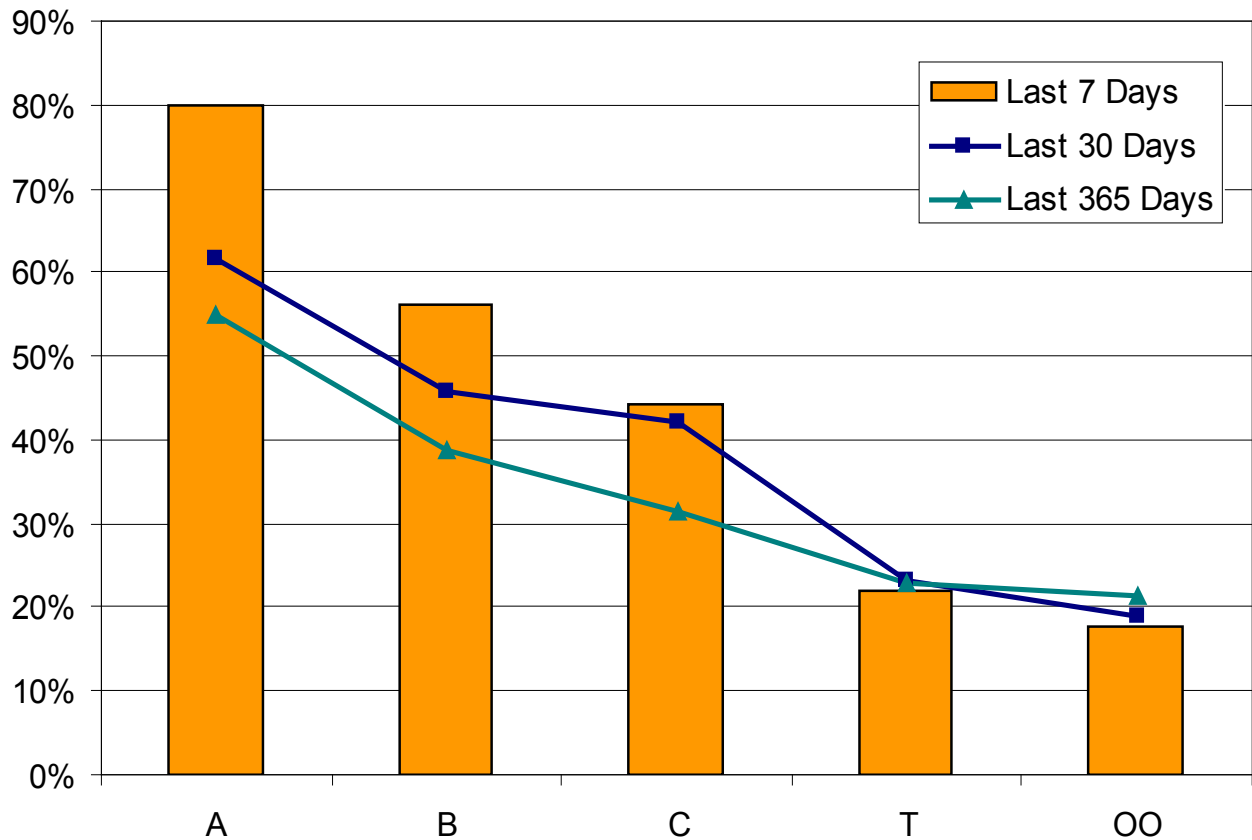
For the Period Sunday November 29, 2009 to Saturday December 5, 2009

JOB	Jobs cut prior to dispatch (unable to fill)	Jobs filled thru employee extensions	Jobs filled by employee double shifting	Jobs filled by local 502 employees	Jobs filled by transferring employees	Jobs left unfilled after dispatch	TOTAL
40 TON					2		2
40 TON & RACK					1		1
BULK OPERATOR					2		2
BULLDOZER					1		1
DOCK GANTRY					9		9
ELECTRICIAN					2	13	15
F.E.L.						1	1
H.D. MECHANIC					1	2	3
HATCH TENDER					2		2
HEAD CHKR		1	1		4		6
HT SIGNALS					2		2
LOCIE ENGINEER					1		1
MILLWRIGHT						1	1
SWITCHMAN					3		3
WHEAT SPECIALTY					12		12
WINCH DRIVER					3		3
<b>TOTAL</b>		<b>1</b>	<b>1</b>		<b>45</b>	<b>17</b>	<b>64</b>

*Explains how shortages are handled by Dispatch*



## Vancouver Casual Employee % Dispatched per Dispatch Board



### Union Meeting Nights

#### Mainland Locals

Vancouver (500)	no meeting
New West. (502)	no meeting

#### Vancouver Island Local

Chemainus (508)	December 14, 2009
-----------------	-------------------

#### Northern Local

Prince Rupert (505)	no meeting
---------------------	------------

**Please be guided by the provisions of Article 15 in the Collective Agreement respecting working restrictions and conditions on Union Meeting Nights.**

### Your Feedback:



Have something for the BCMEA Bulletin?

Send your comments or contributions to the Bulletin's Editor at [editor@bcmea.com](mailto:editor@bcmea.com) or (604) 694-2324.