

October 6, 2009



# BCMEA BULLETIN:

RELIABILITY AND PRODUCTIVITY AT WORK

British Columbia Maritime Employers Association

## BCMEA SHIP OWNERS MEETING:

The October 1st meeting of the Ship Owners Class was met with overwhelming attendance and participation. Over 23 Shipping Companies were represented and senior BCMEA staff spoke on such topics as;

- Training Initiatives
- Proposed MOSH regulations
- Employment Equity
- Lines Issues
- 2010 Negotiations

Meetings were held previously with the Bulk, Container, and Break Bulk groups to table issues to be brought forward to the meeting of the Ship Owners.

It was a very productive meeting, and we thank everyone for their attendance.

### Statutory Holiday - Thanksgiving

This year, Thanksgiving falls on Monday, October 12, 2009. It is a "Recognized Holiday" in the Collective Agreement. As such work performed on that day is in accordance with the provisions of the Agreement.



### Union Meeting Nights for October:

#### Mainland Locals

Vancouver (500)	October 21, 2009
New West. (502)	October 21, 2009

#### Vancouver Island Local

Chemainus (508)	October 19, 2009
-----------------	------------------

#### Northern Local

Prince Rupert (505)	October 20, 2009
---------------------	------------------

Please be guided by the provisions of Article 15 in the Collective Agreement regarding working restrictions and conditions on Union Meeting Nights.

Ship Owners Meeting.....	1
Union Meeting Nights .....	1

#### Monthly Statistics:

~Agent Vessel Forecast.....	2
~Casual Employee .....	2
Utilization	
~Gang Stats .....	3
~Dispatch Shortages .....	4

#### Weekly Statistics:

~Dispatch Shortages .....	5
~Vancouver Casual .....	6
Dispatch	

BCMEA Meeting Dates .....	6
---------------------------	---

**In this issue:**



### Agent Vessel Forecast Statistics for past 28 days: Sep. 6, 2009 - Oct. 3, 2009

Number of Companies with working vessels during this period	25	
Number of participating companies	23	
Participation Levels :	Very High	11
	High	9
	Moderate	3
	Low	0
Average accuracy level	51.55%	
Maximum accuracy level	89.58%	
Minimum accuracy level	12.96%	

### Agent Participation and Accuracy Explanation

<p>Overall Agent Accuracy is based on the forecasting information supplied by the agent compared to the final state of the forecast as supplied by despatch. Agent participation is calculated based on the efforts of the agent in providing forecasting information via the Agent Vessel Forecast System. Participation is based on the comparison between the <u>number</u> of forecasted shifts as against the number of working shifts. Forecast accuracy is based on forecasted shifts and gangs <u>matching</u> with working shifts and gangs.</p>		Percentage of working shifts forecasted
	Very High	More than 90%
	High	61% to 90%
	Moderate	31% to 60%
	Low	up to 30%

### Vancouver Dispatch - Casual Employee Utilization (Sep. 27, 2009 - Oct. 3, 2009)

Shift	Week Day	A Board		B Board		C Board		T Board		00 Board		Total Available	Total Dispatched	% Dispatched
		Available	Dispatched	Available	Dispatched	Available	Dispatched	Available	Dispatched	Available	Dispatched			
DAY	Sunday	60	47	11	4	6	0	8	2	5	1	90	54	60%
	Monday	78	77	41	23	17	6	17	8	11	8	164	122	74%
	Tuesday	72	69	22	3	3	2	6	2	5	3	108	79	73%
	Wednesday	41	37	7	3	1	1	2	1	8	4	59	46	78%
	Thursday	18	16	2	2	4	2	4	1	6	3	34	24	71%
	Friday	60	29	16	2	4	0	4	0	10	4	94	35	37%
	Saturday	87	82	28	6	11	1	4	0	6	2	136	91	67%
GRAVEYARD	Sunday	7	7	20	20	38	38	27	4	11	0	103	69	67%
	Monday	13	3	26	0	16	0	7	1	2	1	64	5	8%
	Tuesday	9	1	6	1	4	0	3	0	0	0	22	2	9%
	Wednesday	10	8	26	10	12	3	7	1	10	2	65	24	37%
	Thursday	4	1	5	0	3	1	2	0	3	0	17	2	12%
	Friday	20	1	6	0	2	0	2	0	2	0	32	1	3%
	Saturday	15	2	5	0	2	0	4	1	2	1	28	4	14%
NIGHT	Sunday	54	45	19	0	3	1	9	1	3	1	88	48	55%
	Monday	13	7	4	1	5	2	5	0	1	0	28	10	36%
	Tuesday	42	35	27	2	12	0	3	1	9	0	93	38	41%
	Wednesday	8	1	2	0	2	0	3	0	3	0	18	1	6%
	Thursday	22	3	5	0	3	1	2	0	3	1	35	5	14%
	Friday	12	4	4	1	3	1	4	1	2	0	25	7	28%
	Saturday	23	23	38	33	22	1	10	3	5	0	98	60	61%
<b>Grand Total</b>		<b>668</b>	<b>498</b>	<b>320</b>	<b>111</b>	<b>173</b>	<b>60</b>	<b>133</b>	<b>27</b>	<b>107</b>	<b>31</b>	<b>1401</b>	<b>727</b>	<b>52%</b>

**Vancouver Gang Stats**  
**September 2009 (as at September 30/09)**

Shift	2/3 Man Special				Basic				Dock Gantry				Grain			
	Req	All	Rec	Shrt	Req	All	Rec	Shrt	Req	All	Rec	Shrt	Req	All	Rec	Shrt
Shift 1 (0100)	10	10	10	0	4	4	4	0	71	71	71	0	26	26	26	0
Shift 2 (0800)	15	15	15	0	65	63	63	2	69	69	69	0	124	124	124	0
Shift 3 (1630)	10	10	10	0	29	29	29	0	92	92	92	0	101	101	101	0
<b>Totals:</b>	<b>35</b>	<b>35</b>	<b>35</b>	<b>0</b>	<b>98</b>	<b>96</b>	<b>96</b>	<b>2</b>	<b>232</b>	<b>232</b>	<b>232</b>	<b>0</b>	<b>251</b>	<b>251</b>	<b>251</b>	<b>0</b>
<b>Percent of Shortage:</b>	<b>0.00%</b>				<b>2.04%</b>				<b>0.00%</b>				<b>0.00%</b>			

**Squamish Gang Stats**  
**September 2009 (as at September 30/09)**

Shift	2/3 Man Special				Basic				Dock Gantry			
	Req	All	Rec	Shrt	Req	All	Rec	Shrt	Req	All	Rec	Shrt
Shift 1 (0100)	0	0	0	0	3	3	3	0	0	0	0	0
Shift 2 (0800)	0	0	0	0	26	26	26	0	0	0	0	0
Shift 3 (1630)	0	0	0	0	17	17	17	0	0	0	0	0
<b>Totals:</b>	<b>0</b>	<b>0</b>	<b>0</b>	<b>0</b>	<b>46</b>	<b>46</b>	<b>46</b>	<b>0</b>	<b>0</b>	<b>0</b>	<b>0</b>	<b>0</b>
<b>Percent of Shortage:</b>	<b>0.00%</b>				<b>0.00%</b>				<b>0.00%</b>			

**Vancouver Island Gang Stats**  
**September 2009 (as at September 30/09)**

Shift	2/3 Man Special				Basic				Dock Gantry			
	Req	All	Rec	Shrt	Req	All	Rec	Shrt	Req	All	Rec	Shrt
Shift 1 (0100)	0	0	0	0	0	0	0	0	0	0	0	0
Shift 2 (0800)	0	0	0	0	18	18	18	0	0	0	0	0
Shift 3 (1630)	0	0	0	0	6	6	6	0	0	0	0	0
<b>Totals:</b>	<b>0</b>	<b>0</b>	<b>0</b>	<b>0</b>	<b>24</b>	<b>24</b>	<b>24</b>	<b>0</b>	<b>0</b>	<b>0</b>	<b>0</b>	<b>0</b>
<b>Percent of Shortage:</b>	<b>0.00%</b>				<b>0.00%</b>				<b>0.00%</b>			

# Dispatch Shortage Stats for September 2009

Shortages at commencement and post dispatch, month-to-date September 30/09

0100 Shift					0800 Shift				
Rating	At	Shifts	Post	Shifts	Rating	At	Shifts	Post	Shifts
	Dispatch		Dispatch			Dispatch		Dispatch	
DOCK GANTRY	8	5	0	0	AUTOMOTIVE MECH-	1	1	1	1
F.E.L. (DOCK)	1	1	0	0	CARPENTER (CERT)	1	1	1	1
H.D.MECH (CERT)	13	9	9	6	ELECTRICIAN (CERT)	4	3	3	2
KOMATSU OP. (N)	1	1	0	0	FIBERCO ROTARY DUMP.	4	3	0	0
KOMATSU OP. (VW)	2	2	0	0	FIBERCO TRUNK (B.O.)	3	1	0	0
MILLWRIGHT (CERT)	6	6	1	1	H.D.MECH (CERT)	7	7	5	5
NEPTUNE TRUNK (B.O.)	6	2	0	0	LOCIE ENGINEER	1	1	0	0
SWITCHMAN (NEPT)	1	1	0	0	MILLWRIGHT (CERT)	8	6	8	6
SWITCHMAN (ALL SITES)	2	1	0	0	NEPT.PORTAL RECLMR	5	1	0	0
TOPSIDE	7	4	0	0	NEPTUNE TRUNK (B.O.)	7	2	3	1
V.W. TRUNK (B.O.)	2	2	0	0	P.M. BULK LIQUID OP.	2	1	0	0
1630 Shift					P.M. ROTARY DUMPER	2	1	2	1
Rating	At	Shifts	Post	Shifts	RED DOG CRANE OP.	1	1	0	0
	Dispatch		Dispatch		SWITCHMAN (ALL SITES)	3	3	0	0
CENT CHECKER	2	2	0	0	TOPSIDE	8	4	0	0
DOCK GANTRY	6	2	0	0	TRACKMAN	3	2	3	2
ELECTRICIAN (CERT)	19	13	5	5	V.W. ADVISOR	4	1	3	1
F.E.L. (DOCK)	1	1	0	0	V.W. TRUNK (B.O.)	1	1	0	0
FIBERCO ROTARY DUMP.	1	1	0	0	WHEAT SPECIALTY	1	1	0	0
FIBERCO TRUNK (B.O.)	1	1	0	0					
H.D.MECH (CERT)	7	7	2	2					
KOMATSU OP. (VW)	1	1	0	0					
LOCIE ENGINEER	1	1	0	0					
MILLWRIGHT (CERT)	15	11	10	7					
NEPTUNE PORTAL	3	2	0	0					
P.M. ROTARY DUMPER	1	1	1	1					
SWITCHMAN (ALL SITES)	10	8	4	4					
V.W. ADVISOR	1	1	0	0					
V.W. TRUNK (B.O.)	2	2	0	0					
WELDER (CERT)	3	3	0	0					
WHEAT SPECIALTY	2	2	0	0					

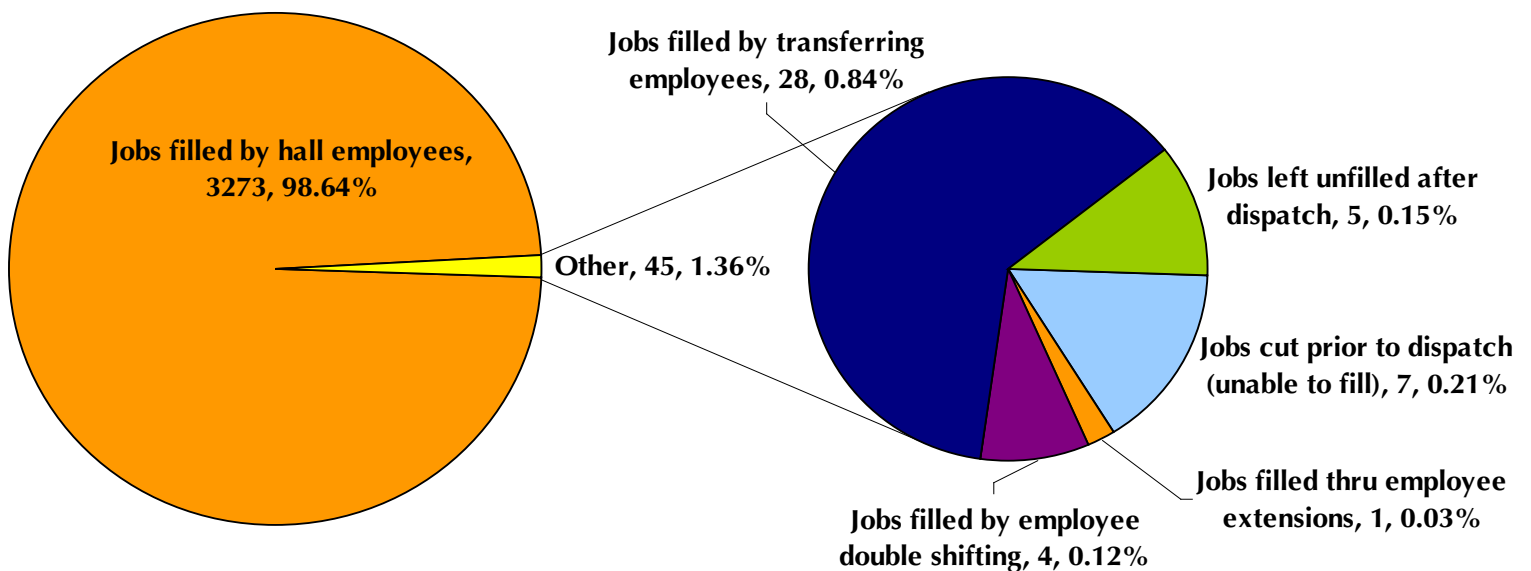


# Dispatch Shortage Statistics:

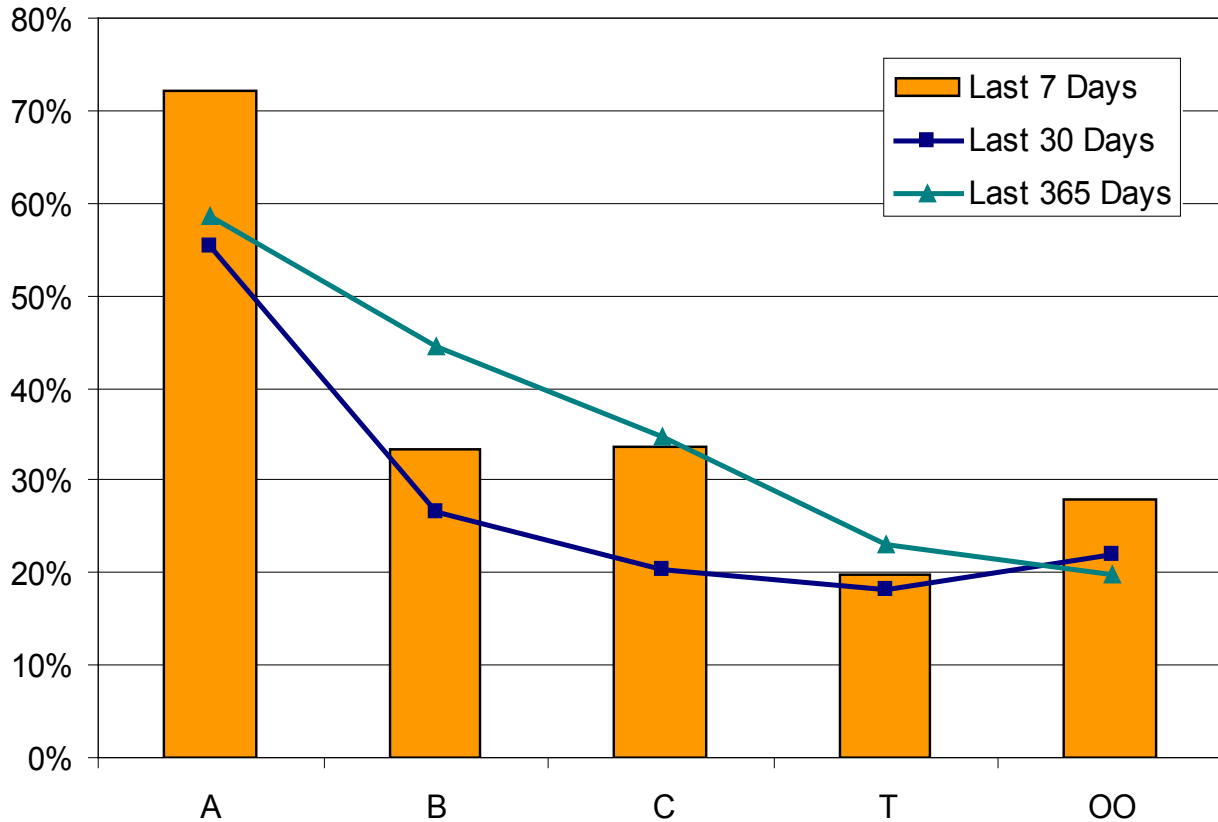
For the Period Sunday, September 27, 2009 to Saturday, October 3, 2009

JOB	Jobs cut prior to dispatch (unable to fill)	Jobs filled thru employee extensions	Jobs filled by employee double shifting	Jobs filled by local 502 employees	Jobs filled by transferring employees	Jobs left unfilled after dispatch	TOTAL
BULK OPERATOR					4		4
CARPENTER	1						1
DOCK GANTRY					2		2
ELECTRICIAN			2		2		4
F.E.L.					1		1
H.D. MECHANIC	3		1			4	8
HATCH TENDER					1		1
HEAD CHKR		1			2		3
HT SIGNALS					1		1
KOMATSU OP	1				2		3
LIQUID BULK					3		3
LOCIE ENGINEER					1		1
MEN					1		1
MILLWRIGHT	2		1		4	1	8
RAIL PERSON					1		1
RUBBER TIRE GTY					1		1
SWITCHMAN					2		2
<b>TOTAL</b>	<b>7</b>	<b>1</b>	<b>4</b>		<b>28</b>	<b>5</b>	<b>45</b>

*Explains how shortages were managed by Dispatch*



# Vancouver Casual Employee % Dispatched per Dispatch Board



## Future BCMEA Meeting Dates:

### Finance & Audit Committee

Friday, Oct. 16, 2009  
9:30 AM - 11:30 AM  
5th Floor Boardroom  
349 Railway Street

### Direct Employers Committee

Wednesday, Oct. 21, 2009  
9:30 AM - 12:00 PM  
5th Floor Boardroom  
349 Railway Street

### Board of Directors Meeting

Tuesday, Oct. 27, 2009  
9:30 AM - 12:00 PM  
5th Floor Boardroom  
349 Railway Street

### Finance & Audit Committee

Friday, Nov. 13, 2009  
9:30 AM - 11:30 AM  
5th Floor Boardroom  
349 Railway Street

### Direct Employers Committee

Wednesday, Nov. 18, 2009  
9:30 AM - 12:00 PM  
5th Floor Boardroom  
349 Railway Street

### Board of Directors Meeting

Tuesday, Nov. 24, 2009  
9:30 AM - 12:00 PM  
5th Floor Boardroom  
349 Railway Street

## Your Feedback:



Have something for the BCMEA Bulletin?

Send your comments or contributions to the Bulletin's Editor at [editor@bcmea.com](mailto:editor@bcmea.com) or (604) 694-2324.