



**BCMEA STAFF PROFILE: Suki Hache - Training, Safety & Recruitment Department**

Suki has been employed with the BCMEA for 4 years, starting initially with the Waterfront Foremen Employers Association. Her current role focuses on administrative support for the Training, Safety and Recruitment Department reporting to VP John Beckett, and also the claims management area. More informally she is involved with organizing a myriad of social activities that improve the social welfare and department of the association.

Suki is somewhat of a globetrotter, having visited 18 countries on 5 continents. Most recently returning this month from Peru where she hiked the Inca Trail, visited Machu Pichu, and explored the Amazon. "The sights, sounds, and smells of this country are pretty amazing".

Day to day she works hard at keeping on top of her fitness through regularly running half marathons, weight training, cycling, and hiking. She compliments this with a passionate interest in nutrition and diet.

Her dream? "I have a small real estate portfolio with bigger "slumlord" aspirations in the not too distant future. That said I am also a great supporter of causes that are important to me, and personally support two charities, and two cats!"



She believes in a balanced life, and other interests include pottery, painting, art, and theatre.

Something not widely known about Suki – prior to joining the BCMEA she spent 6 years in the UK where through the work she was involved with at the time she had the privilege of meeting His Royal Highness "The Prince of Wales" on several occasions, and had the opportunity to meet several well know UK actors such as Sheila Hancock, the "Voice of Noddy", and Tony Robinson "Baldrick" from Blackadder.

**In this issue:**

Staff Profile: Suki Hache.....	1
BCMEA Arbitration Win.....	2
Industry Calendar.....	2
of Events	
Monthly Statistics:	
~Agent Vessel Forecast.....	3
~Casual Employee .....3	
Utilization	
~Gang Stats.....	4
~Dispatch Shortages.....	5
Weekly Statistics:.....	6
Dispatch Shortages	
Vancouver Casual.....	7



## BCMEA Arbitration Win: Cruise Ship Shore Power

A Union jurisdictional claim relating to the provision of Shore Power at Canada Place Cruise Ship Terminal was successfully concluded at arbitration. The Port of Metro Vancouver, Holland America, Princess Cruises, and both the Provincial and Federal Governments have been working cooperatively on a Shore Power project that involved a combined investment of 9 million dollars. The principle objective was to provide electrical power to cruise ships docked at the Canada Place Cruise Ship Terminal. This “green” initiative would allow the cruise ships to shut down their diesel engines and thereby reduce their air emissions while berthed in and around the inner harbour in Vancouver

This matter was heard by an Arbitrator over a period of three days: June 08, July 03 and 17, 2009. Upon considering the parties evidence and submissions the Arbitrator dismissed the Union’s claim to the work by finding that the work in question was not work covered by the Collective Agreement.

In reaching this conclusion the Arbitrator made two primary findings:

1. The electrical contractor was contracted by the Port Authority to do the installation of the Shore Power equipment and not by a BCMEA member.
2. As neither the electrical contract nor the Port are members of the BCMEA the work could not fall under the jurisdiction of the Collective Agreement.

A full copy of the award can be obtained from the BCMEA website.

[www.bcmea.com ns\\_newspress.aspx](http://www.bcmea.com/ns_newspress.aspx)



### Industry Calendar of Events:

August 7	<b>BCMEA BBQ</b> - (Proceeds benefiting Mission Possible) 349 Railway St, Vancouver BC
August 13	<b>ILWU Local 514 Children’s Fundraiser Golf Tournament</b> Burnaby Mountain Golf Course, Burnaby, BC
August 13	<b>Vancouver Transportation Club Golf Tournament</b> Greenacres Golf Club, Richmond, BC
August 16	<b>Vancouver Women’s Transportation Club Golf Tournament</b> Mylora Golf Course, Richmond, BC
August 21-23	<b>Richmond Maritime Festival</b> Britannia Shipyard National Historic Site
August 23-26	<b>Association Canadian Port Authorities Annual Conference</b> Prince Rupert, BC
September 10-11	<b>Van Horne Institute’s Norther Transportation Conference</b> Iqaluit, Nunavut
September 15	<b>ILWU Local 500 Golf Tournament</b> Swan-e-Set Bay Resort & Country Club
September 22	<b>Outlook 2020: Shaping BC’s Economic Future Summit Series</b> Hosted by the Business Council of British Columbia Pan Pacific Hotel, Vancouver
September 23-24	<b>4th Annual Canada Maritime Conference</b> Westin Bayshore Hotel, Vancouver, BC
September 29	<b>World Maritime Day - Theme: Climate Change</b> International Transport Workers’ Federation

Agent Vessel Forecast Statistics for past 28 days: July 4, 2009 - August 1, 2009		
Number of Companies with working vessels during this period		24
Number of participating companies		22
Participation Levels :		
	Very High	10
	High	10
	Moderate	2
	Low	0
Average accuracy level		56.89%
Maximum accuracy level		100.00%
Minimum accuracy level		11.11%

Agent Participation and Accuracy Explanation		
Overall Agent Accuracy is based on the forecasting information supplied by the agent compared to the final state of the forecast as supplied by despatch. Agent participation is calculated based on the efforts of the agent in providing forecasting information via the Agent Vessel Forecast System. Participation is based on the comparison between the <u>number</u> of forecasted shifts as against the number of working shifts. Forecast accuracy is based on forecasted shifts and gangs <u>matching</u> with working shifts and gangs.		Percentage of working shifts forecasted
	Very High	More than 90%
	High	61% to 90%
	Moderate	31% to 60%
	Low	up to 30%

### Vancouver Dispatch - Casual Employee Utilization (July 26, 2009 - August 1, 2009)

Shift	Week Day	A Board		B Board		C Board		T Board		00 Board		Total Available	Total Dispatched	% Dispatched
		Available	Dispatched	Available	Dispatched	Available	Dispatched	Available	Dispatched	Available	Dispatched			
DAY	Sunday	25	25	7	4	2	0	7	1	6	0	47	30	64%
	Monday	90	46	43	17	7	2	17	7	12	2	169	74	44%
	Tuesday	90	81	28	3	15	7	18	8	21	6	172	105	61%
	Wednesday	74	38	19	2	8	2	13	5	7	1	121	48	40%
	Thursday	66	37	19	2	4	0	13	9	7	1	109	49	45%
	Friday	61	46	12	2	3	0	7	2	5	2	88	52	59%
	Saturday	88	82	22	20	12	1	13	2	20	1	155	106	68%
GRAVEYARD	Sunday	9	3	2	0	4	1	6	0	2	0	23	4	17%
	Monday	12	0	6	0	2	0	2	0	2	0	24	0	0%
	Tuesday	3	0	4	0	3	0	6	0	3	0	19	0	0%
	Wednesday	6	1	7	1	7	0	5	0	4	0	29	2	7%
	Thursday	18	0	6	0	7	0	5	0	3	1	39	1	3%
	Friday	19	0	5	0	3	0	4	0	1	0	32	0	0%
	Saturday	16	0	7	4	4	1	8	1	2	0	37	6	16%
NIGHT	Sunday	11	1	8	2	2	1	4	0	3	0	28	4	14%
	Monday	11	7	7	2	6	3	5	0	6	3	35	15	43%
	Tuesday	26	17	9	1	10	2	5	0	7	3	57	23	40%
	Wednesday	55	25	11	1	7	0	7	0	7	2	87	28	32%
	Thursday	22	1	7	2	4	1	4	0	1	0	38	4	11%
	Friday	11	3	5	0	3	0	5	0	4	1	28	4	14%
	Saturday	8	5	5	3	5	2	5	1	3	0	26	11	42%
Grand Total		721	418	239	66	118	23	159	36	126	23	1363	566	42%



**Vancouver Gang Stats**  
July 2009 (as at July 31/09)

Shift	2/3 Man Special				Basic				Dock Gantry				Grain			
	Req	All	Rec	Shrt	Req	All	Rec	Shrt	Req	All	Rec	Shrt	Req	All	Rec	Shrt
Shift 1 (0100)	0	0	0	0	7	7	7	0	20	20	20	0	7	7	7	0
Shift 2 (0800)	13	13	13	0	19	19	19	0	25	25	25	0	58	58	58	0
Shift 3 (1630)	14	14	14	0	13	13	13	0	34	34	34	0	47	47	47	0
<b>Totals:</b>	<b>27</b>	<b>27</b>	<b>27</b>	<b>0</b>	<b>39</b>	<b>39</b>	<b>39</b>	<b>0</b>	<b>79</b>	<b>79</b>	<b>79</b>	<b>0</b>	<b>112</b>	<b>112</b>	<b>112</b>	<b>0</b>
<b>Percent of Shortage:</b>	<b>0.00%</b>				<b>0.00%</b>				<b>0.00%</b>				<b>0.00%</b>			

**Squamish Gang Stats**  
July 2009 (as at July 31/09)

Shift	2/3 Man Special				Basic				Dock Gantry			
	Req	All	Rec	Shrt	Req	All	Rec	Shrt	Req	All	Rec	Shrt
Shift 1 (0100)	0	0	0	0	0	0	0	0	0	0	0	0
Shift 2 (0800)	0	0	0	0	3	3	3	0	0	0	0	0
Shift 3 (1630)	0	0	0	0	3	3	3	0	0	0	0	0
<b>Totals:</b>	<b>0</b>	<b>0</b>	<b>0</b>	<b>0</b>	<b>6</b>	<b>6</b>	<b>6</b>	<b>0</b>	<b>0</b>	<b>0</b>	<b>0</b>	<b>0</b>
<b>Percent of Shortage:</b>	<b>0.00%</b>				<b>0.00%</b>				<b>0.00%</b>			

**Vancouver Island Gang Stats**  
July 2009 (as at July 31/09)

Shift	2/3 Man Special				Basic				Dock Gantry			
	Req	All	Rec	Shrt	Req	All	Rec	Shrt	Req	All	Rec	Shrt
Shift 1 (0100)	0	0	0	0	0	0	0	0	0	0	0	0
Shift 2 (0800)	0	0	0	0	12	12	12	0	0	0	0	0
Shift 3 (1630)	0	0	0	0	2	1	1	1	0	0	0	0
<b>Totals:</b>	<b>0</b>	<b>0</b>	<b>0</b>	<b>0</b>	<b>14</b>	<b>13</b>	<b>13</b>	<b>1</b>	<b>0</b>	<b>0</b>	<b>0</b>	<b>0</b>
<b>Percent of Shortage:</b>	<b>0.00%</b>				<b>7.14%</b>				<b>0.00%</b>			



## Dispatch Shortage Stats for July 2009

Shortages at commencement and post dispatch, month-to-date July 31/09

0100 Shift					0800 Shift				
Rating	At	Shifts	Post	Shifts	Rating	At	Shifts	Post	Shifts
	Dispatch		Dispatch			Dispatch		Dispatch	
DOCK GANTRY	4	1	0	0	BOMBARDIER	2	2	0	0
ELECTRICIAN (CERT)	1	1	0	0	CARPENTER (CERT)	3	3	0	0
H.D.MECH (CERT)	11	9	3	3	DOCK GANTRY	3	2	0	0
LABOURER (DOCK)	5	1	0	0	ELECTRICIAN (CERT)	20	10	17	8
LOCIE ENGINEER	2	2	0	0	F.E.L. (DOCK)	1	1	1	1
MILLWRIGHT (CERT)	5	4	0	0	F.E.L. (SHIP)	1		0	0
NEPTUNE TRUNK(B.O.)	2	2	0	0	H.D.MECH (CERT)	24	19	16	11
RUBBER TIRED GANTRY	3	1	0	0	MILLWRIGHT (CERT)	9	7	5	3
SHIP GANTRY	4	1	0	0	MOBILE CRANE (C.W.)	1	1	0	0
SWITCHMAN(ALL SITES)	4	3	0	0	NEPTUNE TRUNK(B.O.)	3	1	0	0
TOPSIDE	4	2	0	0	P.M. TRUNK (B.O.)	1	1	0	0
WHEAT SPECIALITY	3	3	0	0	PLUMBER (CERT)	1	1	1	1
1630 Shift					SWITCHMAN (FIBERCO)	1	1	0	0
Rating	At	Shifts	Post	Shifts	SWITCHMAN (NEPT)	2	2	1	1
	Dispatch		Dispatch		SWITCHMAN(ALL SITES)	4	2	0	0
DOCK GANTRY	9	4	0	0	TOPSIDE	2	1	0	0
ELECTRICIAN (CERT)	13	11	8	6	TRACKMAN	1	1	1	1
H.D.MECH (CERT)	19	15	14	11	V.W. TRUNK(B.O.)	1	1	0	0
LOCIE ENGINEER	1	1	0	0	WELDER (CERT)	1	1	1	1
MILLWRIGHT (CERT)	22	13	4	3	WHEAT SPEC. PECO	1	1	0	0
RAIL PERSON	1	1	0	0	WHEAT SPECIALITY	1	1	0	0
SWITCHMAN (NEPT)	2	2	0	0					
SWITCHMAN (P.M.)	3	3	0	0					
SWITCHMAN(ALL SITES)	4	4	0	0					
TOPSIDE	6	3	0	0					
WELDER (CERT)	3	3	1	1					
WHEAT SPECIALITY	4	3	0	0					

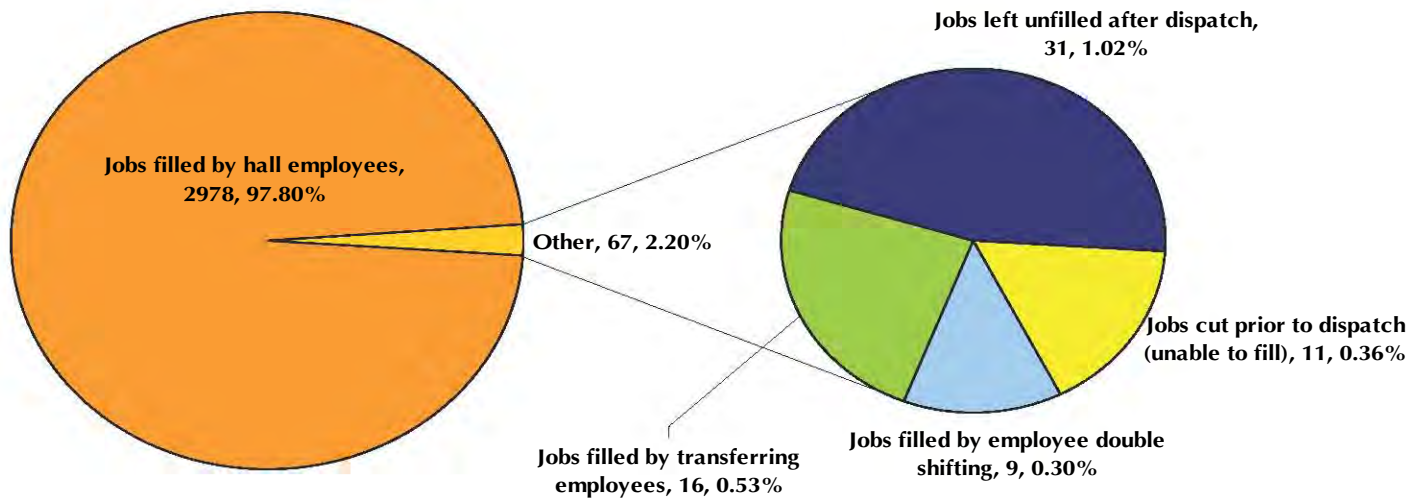


# Dispatch Shortage Statistics:

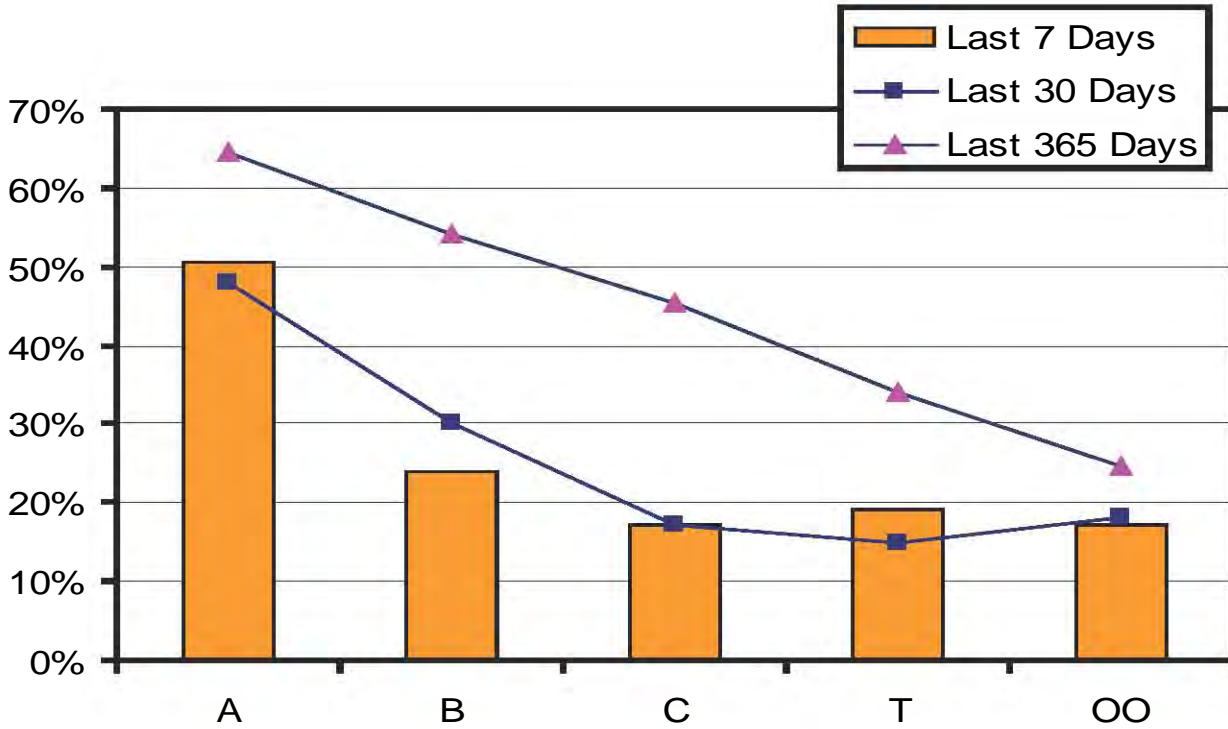
## For the Period Sunday, July 26, 2009 to Saturday, August 1, 2009

JOB	Jobs cut prior to dispatch (unable to fill)	Jobs filled thru employee extensions	Jobs filled by employee double shifting	Jobs filled by local 502 employees	Jobs filled by transferring employees	Jobs left unfilled after dispatch	TOTAL
BOOM	4						4
BULK OPERATOR					3		3
DOCK GANTRY					1		1
ELECTRICIAN			1			6	7
FILLIN	2						2
H.D. MECHANIC	2		3		1	18	24
HATCH TENDER	1						1
HT SIGNALS					1		1
LIQUID BULK					1		1
LOCIE ENGINEER					1		1
MILLWRIGHT			5		4	4	13
PLUMBER					1		1
RACK & S/HOIST	1				2		3
SWITCHMAN					1		1
TRACKMAN						2	2
WELDER						1	1
WINCH DRIVER	1						1
<b>TOTAL</b>	<b>11</b>		<b>9</b>		<b>16</b>	<b>31</b>	<b>67</b>

*Explains how shortages were managed by Dispatch*



# Vancouver Casual Employee % Dispatched per Dispatch Board



## Future BCMEA Meeting Dates:

### Finance & Audit Committee

Friday, Aug. 21, 2009  
9:30 AM - 11:30 AM  
5th Floor Boardroom  
349 Railway Street

### Industry Safety Policy Committee

Wednesday, Sept. 2, 2009  
9:00 AM - 12:00 PM  
5th Floor Boardroom  
349 Railway Street

### Direct Employers Committee

Wednesday, Sept. 16, 2009  
9:30 AM - 12:00 PM  
5th Floor Boardroom  
349 Railway Street

### Finance & Audit Committee

Friday, Sept. 18, 2009  
9:30 AM - 11:30 AM  
5th Floor Boardroom  
349 Railway Street

### Board of Directors Meeting

Tuesday, Sept. 29, 2009  
9:30 AM - 12:00 PM  
5th Floor Boardroom  
349 Railway Street

### Ship Owners Committee

Thursday, Oct. 1, 2009  
9:00 AM - 11:00 AM  
Terminal City Club  
837 West Hastings Street

## Your Feedback:



Have something for the BCMEA Bulletin?

Send your comments or contributions to the Bulletin's Editor at [editor@bcmea.com](mailto:editor@bcmea.com) or (604) 694-2324.