



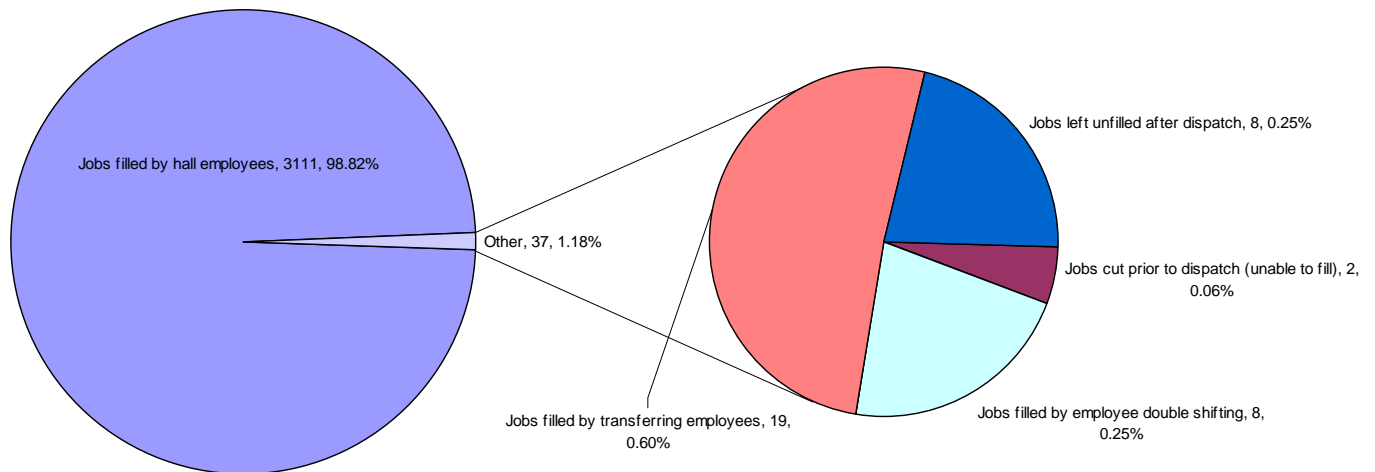
July 7, 2009

DISPATCH SHORTAGE STATISTICS

For Period: Sunday, June 28, 2009 to Saturday, July 4, 2009

job	Jobs cut prior to dispatch (unable to fill)	Jobs filled thru employee extensions	Jobs filled by employee double shifting	Jobs filled by local 502 employees	Jobs filled by transferring employees	Jobs left unfilled after dispatch	TOTAL
BOMBARDIER					1		1
BULK OPERATOR					2		2
DOCK GANTRY					5		5
DRIVER					1		1
ELECTRICIAN			5			5	10
F.E.L.					2		2
MILLWRIGHT			2			2	4
SPARES	2						2
SWITCHMAN			1		2	1	4
WHEAT SPECIALTY					6		6
TOTAL	2		8		19	8	37

Explains how shortages were managed by Dispatch



BCMEA Bulletin



July 7, 2009

Agent Vessel Forecast Statistics for past 28 days: June 7, 2009 - July 4, 2009		
Number of Companies with working vessels during this period		24
Number of participating companies		21
	Very High	8
	High	11
	Moderate	2
	Low	0
Average accuracy level		56.33%
Maximum accuracy level		88.02%
Minimum accuracy level		15.28%

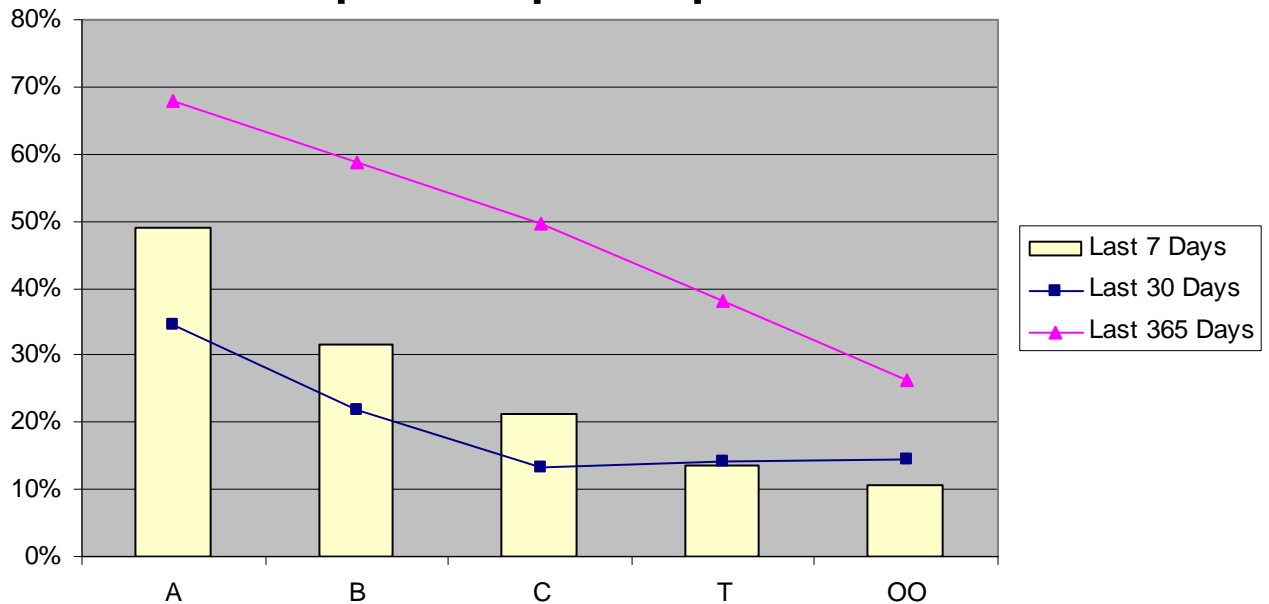
Agent Participation and Accuracy Explanation		
<p>Overall Agent Accuracy is based on the forecasting information supplied by the agent compared to the final state of the forecast as supplied by despatch. Agent participation is calculated based on the efforts of the agent in providing forecasting information via the Agent Vessel Forecast System. Participation is based on the comparison between the <u>number</u> of forecasted shifts as against the number of working shifts. Forecast accuracy is based on forecasted shifts and gangs <u>matching</u> with working shifts and gangs.</p>		Percentage of working shifts forecasted
	Very High	More than 90%
	High	61% to 90%
	Moderate	31% to 60%
	Low	up to 30%

Vancouver Dispatch - Casual Employee Utilization (June 28, 2009 - July 4, 2009)

Shift	Week Day	A Board		B Board		C Board		T Board		00 Board		Total Available	Total Dispatched	% Dispatched
		Available	Dispatched	Available	Dispatched	Available	Dispatched	Available	Dispatched	Available	Dispatched			
DAY	Sunday	12	1	6	1	0	0	1	0	1	0	20	2	10%
	Monday	107	40	33	11	11	0	13	3	9	0	173	54	31%
	Tuesday	84	56	26	2	6	0	8	1	4	0	128	59	46%
	Wednesday	5	0	1	0	1	0	2	0	0	0	9	0	0%
	Thursday	77	48	20	6	6	0	11	4	4	2	118	60	51%
	Friday	69	69	22	6	5	0	3	1	4	2	103	78	76%
	Saturday	90	90	29	23	7	0	5	0	2	0	133	113	85%
GRAVEYARD	Sunday	2	0	3	0	3	0	4	0	1	0	13	0	0%
	Monday	8	0	3	1	1	0	1	0	1	0	14	1	7%
	Tuesday	13	2	3	1	3	0	4	0	1	0	24	3	13%
	Wednesday	16	0	12	2	5	0	4	0	3	0	40	2	5%
	Thursday	5	0			2	0	2	0	2	0	11	0	0%
	Friday	19	3	8	0	2	0	3	0	1	0	33	3	9%
	Saturday	8	5	6	1	3	0	2	0	3	0	22	6	27%
NIGHT	Sunday	10	0	3	0	2	0	2	0	1	0	18	0	0%
	Monday	21	7	2	1	6	1	7	1	4	0	40	10	25%
	Tuesday	35	18	18	1	6	1	5	0	5	0	69	20	29%
	Wednesday	7	0	0	0	2	0	2	0	2	0	13	0	0%
	Thursday	32	10	14	1	2	0	3	1	3	1	54	13	24%
	Friday	13	4	8	2	6	3	2	1	3	1	32	11	34%
	Saturday	20	20	23	23	18	18	16	4	4	1	81	66	81%
Grand Total		653	373	240	82	97	23	100	16	58	7	1148	501	44%

July 7, 2009

Vancouver Casual Employee % Dispatched per Dispatch Board



Vancouver Gang Stats

June 2009 (as at June 30/09)

Shift	2/3 Man Special				Basic				Dock Gantry				Grain			
	Req	All	Rec	Shrt	Req	All	Rec	Shrt	Req	All	Rec	Shrt	Req	All	Rec	Shrt
Shift 1 (0100)	8	8	8	0	4	4	4	0	47	47	47	0	39	39	39	0
Shift 2 (0800)	15	15	15	0	53	53	53	0	84	84	84	0	143	143	143	0
Shift 3 (1630)	15	15	15	0	27	27	27	0	85	85	85	0	107	107	107	0
Totals:	38	38	38	0	84	84	84	0	216	216	216	0	289	289	289	0
Percent of Shortage:	0.00%				0.00%				0.00%				0.00%			

July 2009 (as at July 6/09)

Shift	2/3 Man Special				Basic				Dock Gantry				Grain			
	Req	All	Rec	Shrt	Req	All	Rec	Shrt	Req	All	Rec	Shrt	Req	All	Rec	Shrt
Shift 1 (0100)	0	0	0	0	4	4	4	0	9	9	9	0	4	4	4	0
Shift 2 (0800)	6	6	6	0	13	13	13	0	10	10	10	0	26	26	26	0
Shift 3 (1630)	7	7	7	0	8	8	8	0	16	16	16	0	20	20	20	0
Totals:	13	13	13	0	25	25	25	0	35	35	35	0	50	50	50	0
Percent of Shortage:	0.00%				0.00%				0.00%				0.00%			

July 7, 2009

Squamish Gang Stats

June 2009 (as at June 30/09)

Shift	2/3 Man Special				Basic				Dock Gantry			
	Req	All	Rec	Shrt	Req	All	Rec	Shrt	Req	All	Rec	Shrt
Shift 1 (0100)	0	0	0	0	2	2	2	0	0	0	0	0
Shift 2 (0800)	0	0	0	0	17	15	15	2	0	0	0	0
Shift 3 (1630)	0	0	0	0	15	15	15	0	0	0	0	0
Totals:	0	0	0	0	34	32	32	2	0	0	0	0
Percent of Shortage:	0.00%				0.00%				0.00%			

July 2009 (as at July 6/09)

Shift	2/3 Man Special				Basic				Dock Gantry			
	Req	All	Rec	Shrt	Req	All	Rec	Shrt	Req	All	Rec	Shrt
Shift 1 (0100)	0	0	0	0	0	0	0	0	0	0	0	0
Shift 2 (0800)	0	0	0	0	1	1	1	0	0	0	0	0
Shift 3 (1630)	0	0	0	0	2	2	2	0	0	0	0	0
Totals:	0	0	0	0	3	3	3	0	0	0	0	0
Percent of Shortage:	0.00%				0.00%				0.00%			

Vancouver Island Gang Stats

June 2009 (as at June 30/09)

Shift	2/3 Man Special				Basic				Dock Gantry			
	Req	All	Rec	Shrt	Req	All	Rec	Shrt	Req	All	Rec	Shrt
Shift 1 (0100)	0	0	0	0	0	0	0	0	0	0	0	0
Shift 2 (0800)	15	15	15	0	61	60	59	2	0	0	0	0
Shift 3 (1630)	14	14	14	0	12	12	12	0	0	0	0	0
Totals:	29	29	29	0	73	72	71	2	0	0	0	0
Percent of Shortage:	0.00%				2.74%				0.00%			

July 2009 (as at July 6/09)

Shift	2/3 Man Special				Basic				Dock Gantry			
	Req	All	Rec	Shrt	Req	All	Rec	Shrt	Req	All	Rec	Shrt
Shift 1 (0100)	0	0	0	0	0	0	0	0	0	0	0	0
Shift 2 (0800)	0	0	0	0	6	6	6	0	0	0	0	0
Shift 3 (1630)	0	0	0	0	2	1	1	1	0	0	0	0
Totals:	0	0	0	0	8	7	7	1	0	0	0	0
Percent of Shortage:	0.00%				12.50%				0.00%			

July 7, 2009

Dispatch Shortage Stats for June 2009

Shortages at commencement and post dispatch, month-to-date June 30/09

DOCK GANTRY	1	1	0	0	BULLDOZER (DOCK)	1	1	0	0
DOW CHEMICALS	2	2	0	0	CARPENTER (CERT)	1	1	0	0
NEPTUNE TRUNK (B.O.)	1	1	0	0	DOCK GANTRY	1	1	0	0
P.M. BULK LIQUID OP.	4	3	0	0	ELECTRICIAN (CERT)	9	7	6	5
V.W. TRUNK (B.O.)	1	1	0	0	FIRST AID MAN	2	2	0	0
WHEAT SPECIALTY	3	3	0	0	H.D. MECH (CERT)	2	2	0	0
0800 Shift					MILLWRIGHT (CERT)	7	6	2	2
Rating	At	Shifts	Post	Shifts	RAIL PERSON	1	1	0	0
	Dispatch		Dispatch		RED DOG CRANE OP.	1	1	0	0
DOW CHEMICALS	1	1	0	0	SWITCHMAN (ALL SITES)	4	2	0	0
ELECTRICIAN (CERT)	5	5	3	3	WELDER (CERT)	3	3	1	1
H.D. MECH (CERT)	2	2	0	0	WHEAT SPECIALTY	19	11	0	0
P.M. BULK LIQUID OP.	1	1	0	0					
PLUMBER (CERT)	1	1	0	0					
TOPSIDE	5	4	0	0					
TRACKMAN	3	3	0	0					

Union Meeting Nights – July 2009

There are no Union Meetings scheduled for July 2009.

Dispatch Shortage Stats for July 2009

Shortages at commencement and post dispatch, month-to-date July 06/09

0100 Shift					0800 Shift				
Rating	At	Shifts	Post	Shifts	Rating	At	Shifts	Post	Shifts
	Dispatch		Dispatch			Dispatch		Dispatch	
H.D. MECH (CERT)	3	1	0	0	BOMBARDIER	1	1	0	0
LABOURER (DOCK)	5	1	0	0	CARPENTER (CERT)	2	2	0	0
RUBBER TIRED GANTRY	3	1	0	0	ELECTRICIAN (CERT)	4	1	4	1
SWITCHMAN (ALL SITES)	2	1	0	0	H.D. MECH (CERT)	1	1	0	0
TOPSIDE	2	1	0	0	SWITCHMAN (ALL SITES)	2	1	0	0
WHEAT SPECIALTY	2	2	0	0	WHEAT SPEC. PECO	1	1	0	0
					WHEAT SPECIALTY	1	1	0	0
1630 Shift									
Rating	At	Shifts	Post	Shifts					
	Dispatch		Dispatch						
DOCK GANTRY	7	3	0	0					
ELECTRICIAN (CERT)	6	5	3	2					
MILLWRIGHT (CERT)	10	6	3	2					
SWITCHMAN (NEPT)	1	1	0	0					
SWITCHMAN (P.M.)	1	1	0	0					
SWITCHMAN (ALL SITES)	3	3	0	0					

Send your comments or contributions
to the Bulletin's editor:

Gordon Clissold

editor@bcmea.com

604-694-2318