

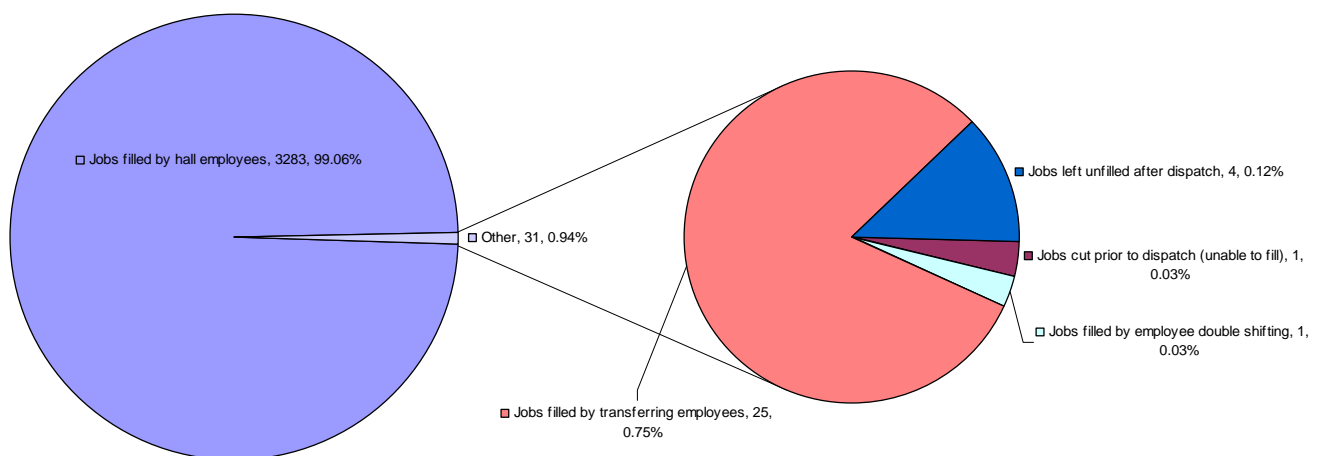
June 30, 2009

DISPATCH SHORTAGE STATISTICS

For Period: Sunday, June 21, 2009 to Saturday, June 27, 2009

job	Jobs cut prior to dispatch (unable to fill)	Jobs filled thru employee extensions	Jobs filled by employee double shifting	Jobs filled by local 502 employees	Jobs filled by transferring employees	Jobs left unfilled after dispatch	TOTAL
BULLDOZER					1		1
DRIVER					2		2
ELECTRICIAN			1		2	3	6
HATCH TENDER					4		4
HT SIGNALS					2		2
JANITOR						1	1
MEN					1		1
MOBILE CRANE OP					1		1
PLUMBER					2		2
TRACKMAN					2		2
WHEAT MACHINE					1		1
WHEAT SPECIALTY					6		6
WINCH DRIVER	1				1		2
TOTAL	1		1		25	4	31

Explains how shortages were managed by Dispatch



June 30, 2009

Agent Vessel Forecast Statistics for past 28 days: May 31, 2009 - June 27, 2009		
Number of Companies with working vessels during this period		25
Number of participating companies		21
Participation Levels :		
	Very High	8
	High	10
	Moderate	3
	Low	0
Average accuracy level		55.00%
Maximum accuracy level		90.69%
Minimum accuracy level		15.28%

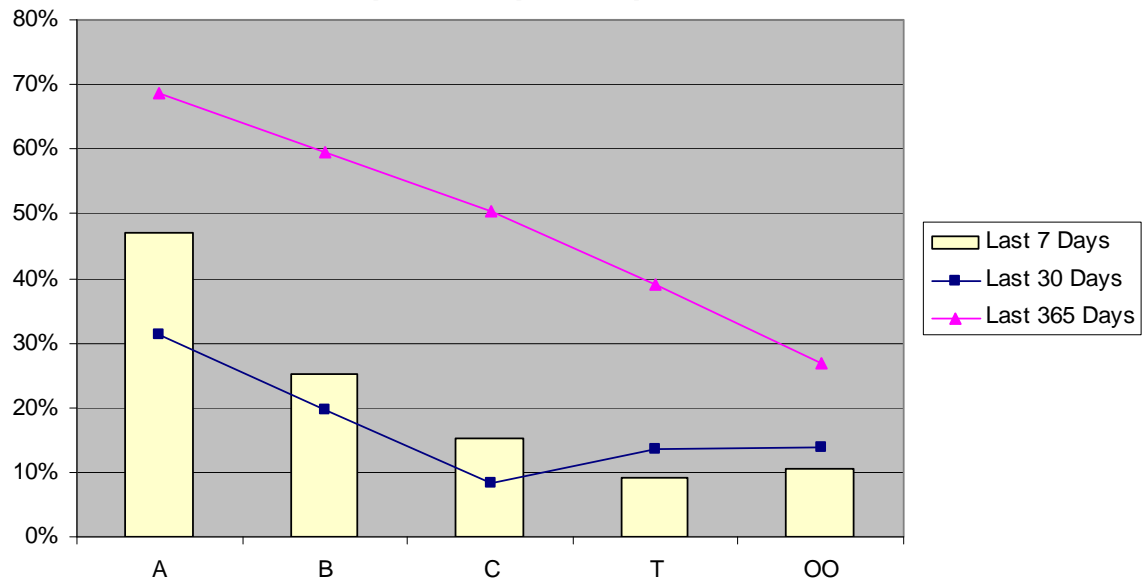
Agent Participation and Accuracy Explanation		
<p>Overall Agent Accuracy is based on the forecasting information supplied by the agent compared to the final state of the forecast as supplied by despatch. Agent participation is calculated based on the efforts of the agent in providing forecasting information via the Agent Vessel Forecast System. Participation is based on the comparison between the <u>number</u> of forecasted shifts as against the number of working shifts. Forecast accuracy is based on forecasted shifts and gangs <u>matching</u> with working shifts and gangs.</p>		Percentage of working shifts forecasted
	Very High	More than 90%
	High	61% to 90%
	Moderate	31% to 60%
	Low	up to 30%

Vancouver Dispatch - Casual Employee Utilization (June 21, 2009 - June 27, 2009)

Shift	Week Day	A Board		B Board		C Board		T Board		00 Board		Total Available	Total Dispatched	% Dispatched
		Available	Dispatched	Available	Dispatched	Available	Dispatched	Available	Dispatched	Available	Dispatched			
DAY	Sunday	19	0	4	0							23	0	0%
	Monday	118	74	36	9	14	0	19	6	8	3	195	92	47%
	Tuesday	80	36	16	3	4	0	8	0	5	2	113	41	36%
	Wednesday	72	64	22	3	10	3	8	0	5	1	117	71	61%
	Thursday	75	50	17	6	6	1	6	0	5	0	109	57	52%
	Friday	63	63	19	17	2	2	5	3	7	1	96	86	90%
	Saturday	91	91	31	19	10	0	6	0	7	0	145	110	76%
GRAVEYARD	Sunday	9	0	2	0	1	0	3	0	1	0	16	0	0%
	Monday	5	0	2	0			1	0	1	0	9	0	0%
	Tuesday	18	0	4	0	2	0	4	0	2	0	30	0	0%
	Wednesday	33	1	8	2	7	3	4	0	1	0	53	6	11%
	Thursday	8	3	6	1	1	0	3	0	4	0	22	4	18%
	Friday	20	0	7	0	5	0	6	0	5	0	43	0	0%
	Saturday	4	1	1	0	6	4	6	0	4	0	21	5	24%
NIGHT	Sunday	7	0	2	0	1	0	1	0	1	0	12	0	0%
	Monday	27	1	9	0	3	0	6	0	3	0	48	1	2%
	Tuesday	44	1	12	0	5	0	5	0	3	1	69	2	3%
	Wednesday	24	16	11	3	4	2	2	0	5	0	46	21	46%
	Thursday	29	7	7	1	6	0	6	1	5	0	53	9	17%
	Friday	12	12	7	7	6	2	5	0	6	1	36	22	61%
	Saturday	4	1	3	0	3	0	3	0	2	1	15	2	13%
Grand Total		762	421	226	71	96	17	107	10	80	10	1271	529	42%

June 30, 2009

Vancouver Casual Employee % Dispatched per Dispatch Board



UUVancouver Gang Stats June 2009 (as at June 29/09)

Shift	2/3 Man Special				Basic				Dock Gantry				Grain			
	Req	All	Rec	Shrt	Req	All	Rec	Shrt	Req	All	Rec	Shrt	Req	All	Rec	Shrt
Shift 1 (0100)	8	8	8	0	4	4	4	0	47	47	47	0	37	37	37	0
Shift 2 (0800)	13	13	13	0	50	50	50	0	78	78	78	0	138	138	138	0
Shift 3 (1630)	13	13	13	0	26	26	26	0	80	80	80	0	103	103	103	0
Totals:	34	34	34	0	80	80	80	0	205	205	205	0	278	278	278	0
Percent of Shortage:	0.00%				0.00%				0.00%				0.00%			

Squamish Gang Stats June 2009 (as at June 29/09)

Shift	2/3 Man Special				Basic				Dock Gantry			
	Req	All	Rec	Shrt	Req	All	Rec	Shrt	Req	All	Rec	Shrt
Shift 1 (0100)	0	0	0	0	2	2	2	0	0	0	0	0
Shift 2 (0800)	0	0	0	0	17	15	15	2	0	0	0	0
Shift 3 (1630)	0	0	0	0	15	15	15	0	0	0	0	0
Totals:	0	0	0	0	34	32	32	2	0	0	0	0
Percent of Shortage:	0.00%				5.88%				0.00%			

June 30, 2009

Vancouver Island Gang Stats June 2009 (as at June 29/09)

Shift	2/3 Man Special				Basic				Dock Gantry			
	Req	All	Rec	Shrt	Req	All	Rec	Shrt	Req	All	Rec	Shrt
Shift 1 (0100)	0	0	0	0	0	0	0	0	0	0	0	0
Shift 2 (0800)	15	15	15	0	61	60	59	2	0	0	0	0
Shift 3 (1630)	14	14	14	0	12	12	12	0	0	0	0	0
Totals:	29	29	29	0	73	72	71	2	0	0	0	0
Percent of Shortage:	0.00%				2.74%				0.00%			

Dispatch Shortage Stats for June 2009

Shortages at commencement and post dispatch, month-to-date June 29/09

0100 Shift					1630 Shift				
Rating	At	Shifts	Post	Shifts	Rating	At	Shifts	Post	Shifts
	Dispatch		Dispatch			Dispatch		Dispatch	
DOCK GANTRY	1	1	0	0	BULLDOZER (DOCK)	1	1	0	0
DOW CHEMICALS	1	1	0	0	CARPENTER (CERT)	1	1	0	0
NEPTUNE TRUNK (B.O.)	1	1	0	0	DOCK GANTRY	1	1	0	0
P.M. BULK LIQUID OP.	4	3	0	0	ELECTRICIAN (CERT)	9	7	6	5
WHEAT SPECIALTY	3	3	0	0	FIRST AID MAN	2	2	0	0
0800 Shift					H.D. MECH (CERT)	2	2	0	0
Rating	At	Shifts	Post	Shifts	MILLWRIGHT (CERT)	7	6	2	2
	Dispatch		Dispatch		RAIL PERSON	1	1	0	0
DOW CHEMICALS	1	1	0	0	RED DOG CRANE OP.	1	1	0	0
ELECTRICIAN (CERT)	5	5	3	3	SWITCHMAN (ALL SITES)	4	2	0	0
H.D. MECH (CERT)	2	2	0	0	WELDER (CERT)	3	3	1	1
P.M. BULK LIQUID OP.	1	1	0	0	WHEAT SPECIALTY	19	11	0	0
PLUMBER (CERT)	1	1	0	0					
TOPSIDE	5	4	0	0					
TRACKMAN	3	3	0	0					

Send your comments or contributions
to the Bulletin's editor:

Gordon Clissold

editor@bcmea.com

604-694-2318