

June 16, 2009

Dispatch Shortage Stats for June 2009

Shortages at commencement and post dispatch, month-to-date June 15/09

0100 Shift					1630 Shift				
Rating	At	Shifts	Post	Shifts	Rating	At	Shifts	Post	Shifts
	Dispatch		Dispatch			Dispatch		Dispatch	
DOCK GANTRY	1	1	0	0	BULLDOZER (DOCK)	1	1	0	0
DOW CHEMICALS	1	1	0	0	ELECTRICIAN (CERT)	3	3	1	1
NEPTUNE TRUNK (B.O.)	1	1	0	0	FIRST AID MAN	2	2	0	0
P.M. BULK LIQUID OP.	4	3	0	0	H.D. MECH (CERT)	2	2	0	0
0800 Shift					MILLWRIGHT (CERT)	6	5	1	1
Rating	At	Shifts	Post	Shifts	RAIL PERSON	1	1	0	0
	Dispatch		Dispatch		SWITCHMAN (ALL SITES)	4	2	0	0
ELECTRICIAN (CERT)	2	2	2	2	WELDER (CERT)	3	3	1	1
H.D. MECH (CERT)	2	2	0	0	WHEAT SPECIALTY	2	2	0	0
PLUMBER (CERT)	1	1	0	0					

Vancouver Gang Stats June 2009 (as at June 15/09)

Shift	2/3 Man Special				Basic				Dock Gantry				Grain			
	Req	All	Rec	Shrt	Req	All	Rec	Shrt	Req	All	Rec	Shrt	Req	All	Rec	Shrt
Shift 1 (0100)	3	3	3	0	2	2	2	0	26	26	26	0	16	16	16	0
Shift 2 (0800)	5	5	5	0	7	7	7	0	40	40	40	0	68	68	68	0
Shift 3 (1630)	5	5	5	0	10	10	10	0	42	42	42	0	54	54	54	0
Totals:	13	13	13	0	19	19	19	0	108	108	108	0	138	138	138	0
Percent of Shortage:	0.00%				0.00%				0.00%				0.00%			

Squamish Gang Stats June 2009 (as at June 15/09)

Shift	2/3 Man Special				Basic				Dock Gantry			
	Req	All	Rec	Shrt	Req	All	Rec	Shrt	Req	All	Rec	Shrt
Shift 1 (0100)	0	0	0	0	2	2	2	0	0	0	0	0
Shift 2 (0800)	0	0	0	0	5	3	3	2	0	0	0	0
Shift 3 (1630)	0	0	0	0	4	4	4	0	0	0	0	0
Totals:	0	0	0	0	11	9	9	2	0	0	0	0
Percent of Shortage:	0.00%				0.00%				0.00%			



June 16, 2009

Vancouver Island Gang Stats June 2009 (as at June 15/09)

Shift	2/3 Man Special				Basic				Dock Gantry			
	Req	All	Rec	Shrt	Req	All	Rec	Shrt	Req	All	Rec	Shrt
Shift 1 (0100)	0	0	0	0	0	0	0	0	0	0	0	0
Shift 2 (0800)	15	15	15	0	24	24	24	0	0	0	0	0
Shift 3 (1630)	14	14	14	0	2	2	2	0	0	0	0	0
Totals:	29	29	29	0	26	26	26	0	0	0	0	0
Percent of Shortage:	0.00%				0.00%				0.00%			

DISPATCH SHORTAGE STATISTICS

For Period: Sunday, June 7, 2009 to Saturday, June 13, 2009

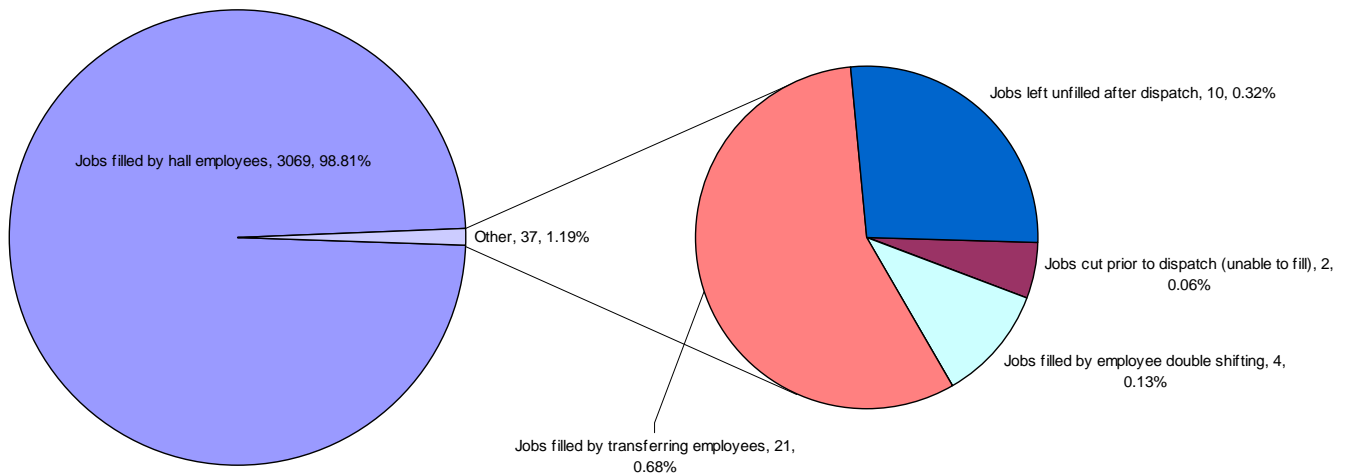
job	Jobs cut prior to dispatch (unable to fill)	Jobs filled thru employee extensions	Jobs filled by employee double shifting	Jobs filled by local 502 employees	Jobs filled by transferring employees	Jobs left unfilled after dispatch	TOTAL
BULK OPERATOR					2		2
BULLDOZER					1		1
ELECTRICIAN	1		2			5	8
F.E.L.					2		2
H.D. MECHANIC					1	4	5
HATCH TENDER					1		1
LIQUID BULK					4		4
MILLWRIGHT	1						1
RAIL PERSON					1		1
RUBBER TIRE GTY						1	1
SHIP GANTRY					1		1
SWITCHMAN					4		4
WELDER			2				2
WHEAT SPECIALTY					4		4
TOTAL	2		4		21	10	37

Explains how shortages were managed by Dispatch

BCMEA Bulletin



June 16, 2009



Agent Vessel Forecast Statistics for past 28 days: May 17, 2009 - June 13, 2009		
Number of Companies with working vessels during this period		26
Number of participating companies		22
Participation Levels :		
	Very High	9
	High	9
	Moderate	2
	Low	2
Average accuracy level		57.65%
Maximum accuracy level		100.00%
Minimum accuracy level		1.67%

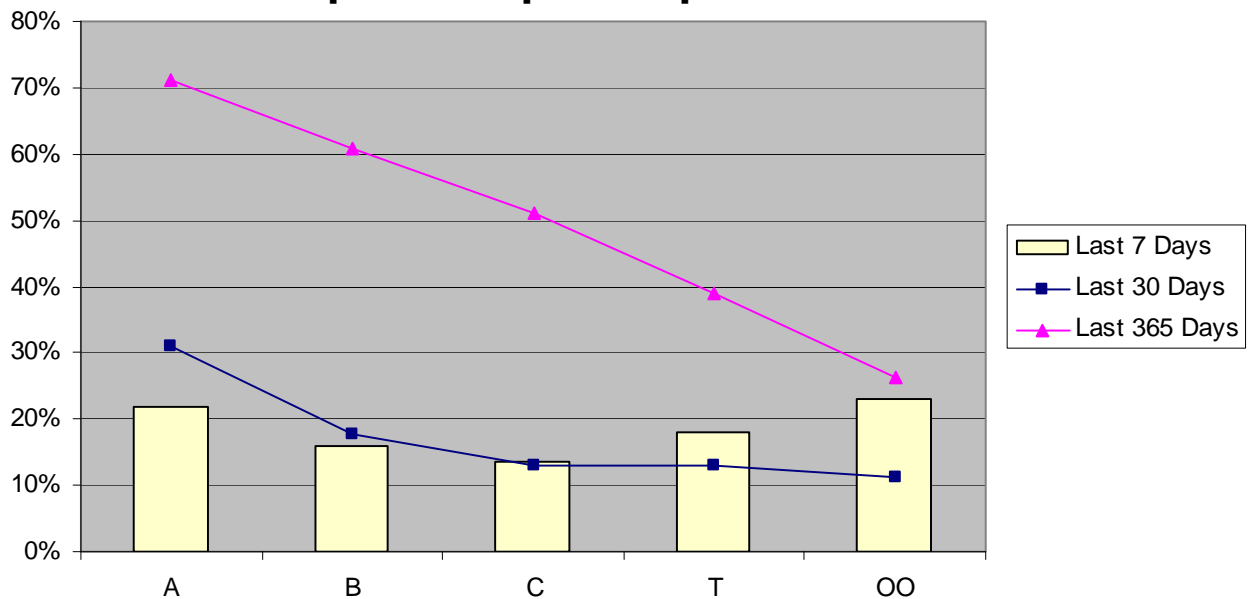
Agent Participation and Accuracy Explanation		
Overall Agent Accuracy is based on the forecasting information supplied by the agent compared to the final state of the forecast as supplied by despatch. Agent participation is calculated based on the efforts of the agent in providing forecasting information via the Agent Vessel Forecast System. Participation is based on the comparison between the <u>number</u> of forecasted shifts as against the number of working shifts. Forecast accuracy is based on forecasted shifts and gangs <u>matching</u> with working shifts and gangs.		Percentage of working shifts forecasted
	Very High	More than 90%
	High	61% to 90%
	Moderate	31% to 60%
	Low	up to 30%

June 16, 2009

Vancouver Dispatch - Casual Employee Utilization (June 7, 2009 - June 13, 2009)

Shift	Week Day	A Board		B Board		C Board		T Board		OO Board		Total Available	Total Dispatched	% Dispatched
		Available	Dispatched	Available	Dispatched	Available	Dispatched	Available	Dispatched	Available	Dispatched			
DAY	Sunday	38	5	7	2	2	0	2	0	0	0	49	7	14%
	Monday	71	12	22	9	6	1	9	5	6	2	114	29	25%
	Tuesday	40	12	9	3	3	0	5	0	8	1	65	16	25%
	Wednesday	60	44	10	3	1	0	8	3	6	3	85	53	62%
	Thursday	75	8	14	2	4	2	4	0	7	1	104	13	13%
	Friday	89	54	22	2	9	2	10	2	8	3	138	63	46%
	Saturday	72	18	13	5	2	0	0	0	2	0	89	23	26%
GRAVEYARD	Sunday	9	0	4	1	4	0	1	0	3	0	21	1	5%
	Monday	20	5	2	0	1	1	1	0	0	0	24	6	25%
	Tuesday	11	0	4	1	2	0	0	0	0	0	17	1	6%
	Wednesday	44	2	2	0	6	3	5	0	4	0	61	5	8%
	Thursday	29	0	2	0	2	0	3	0	1	0	37	0	0%
	Friday	86	34	23	1	8	1	6	0	4	1	127	37	29%
	Saturday	6	3	6	0	2	1	2	0	2	0	18	4	22%
NIGHT	Sunday	21	1	1	0	2	0	3	1	1	1	28	3	11%
	Monday	13	1	5	1	3	1	1	0	5	2	27	5	19%
	Tuesday	59	4	7	1	5	0	6	1	5	2	82	8	10%
	Wednesday	41	3	4	0	2	0	4	2	2	1	53	6	11%
	Thursday	58	2	12	0	6	0	7	1	7	2	90	5	6%
	Friday	14	14	9	2	3	0	7	3	7	2	40	21	53%
	Saturday	13	0	1	0	1	0	2	0	4	0	21	0	0%
Grand Total		869	222	179	33	74	12	86	18	82	21	1290	306	24%

Vancouver Casual Employee % Dispatched per Dispatch Board





June 16, 2009

BCMEA SCHEDULED MEETINGS

Container Sector

Tuesday June 16, 2009
9:00 AM – 11:00 AM
5th Floor Boardroom
349 Railway St

Joint Safety Committee

Thursday June 18, 2009
9:00 AM – 11:00 AM
5th Floor Boardroom
349 Railway St

Waterfront Foremen's Pension Plan (Trustees)

Friday June 19, 2009
9:30 AM – 2:00 PM
4th Floor Boardroom
349 Railway St

Board of Directors

Wednesday June 24, 2009
9:00 AM – 11:30 AM
5th Floor Boardroom
349 Railway St

Grain Sector

Wednesday June 17, 2009
9:00 AM – 11:00 AM
5th Floor Boardroom
349 Railway St

Finance and Audit Committee

Friday June 19, 2009
9:30 AM – 11:00 AM
5th floor boardroom
349 Railway St

Break Bulk Sector

Wednesday June 24, 2009
1:00 PM – 2:00 PM
5th Floor Boardroom
349 Railway St

Send your comments
or contributions
to the Bulletin's editor:

Gordon Clissold

editor@bcmea.com

604-694-2318