



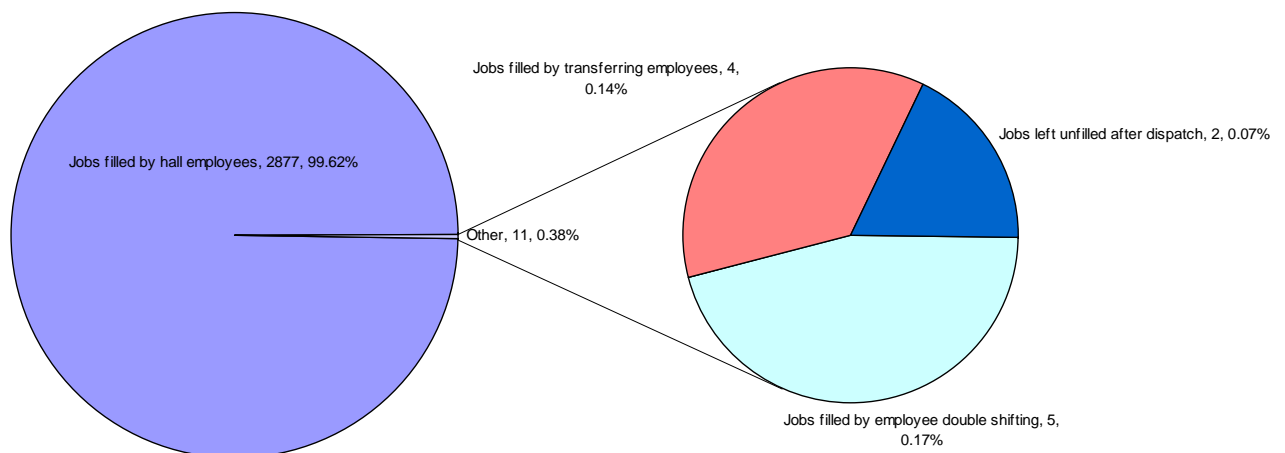
June 9, 2009

DISPATCH SHORTAGE STATISTICS

For Period: Sunday, May 31, 2009 to Saturday, June 6, 2009

job	Jobs cut prior to dispatch (unable to fill)	Jobs filled thru employee extensions	Jobs filled by employee double shifting	Jobs filled by local 502 employees	Jobs filled by transferring employees	Jobs left unfilled after dispatch	TOTAL
BULK OPERATOR					1		1
H.D. MECHANIC			1				1
KOMATSU OP					1		1
MEN					1		1
MILLWRIGHT			4			1	5
RAIL PERSON					1		1
WELDER						1	1
TOTAL			5		4	2	11

Explains how shortages were managed by Dispatch



BCMEA Bulletin



June 9, 2009

Agent Vessel Forecast Statistics for past 28 days: May 9, 2009 - June 6, 2009		
Number of Companies with working vessels during this period		18
Number of participating companies		16
Participation Levels :		
	Very High	8
	High	5
	Moderate	3
	Low	0
Average accuracy level		68.98%
Maximum accuracy level		100.00%
Minimum accuracy level		37.50%

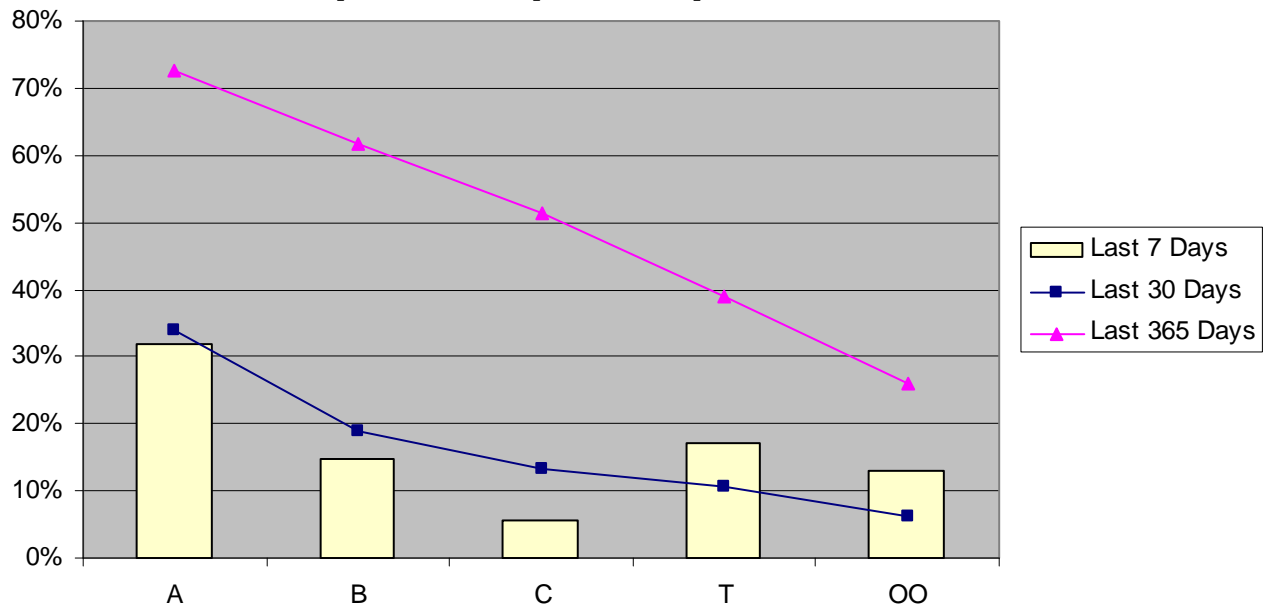
Agent Participation and Accuracy Explanation		
<p>Overall Agent Accuracy is based on the forecasting information supplied by the agent compared to the final state of the forecast as supplied by despatch. Agent participation is calculated based on the efforts of the agent in providing forecasting information via the Agent Vessel Forecast System. Participation is based on the comparison between the <u>number</u> of forecasted shifts as against the number of working shifts. Forecast accuracy is based on forecasted shifts and gangs <u>matching</u> with working shifts and gangs.</p>		Percentage of working shifts forecasted
	Very High	More than 90%
	High	61% to 90%
	Moderate	31% to 60%
	Low	up to 30%

Vancouver Dispatch - Casual Employee Utilization (May 31, 2009 - June 6, 2009)

Shift	Week Day	A Board		B Board		C Board		T Board		00 Board		Total Available	Total Dispatched	% Dispatched
		Available	Dispatched	Available	Dispatched	Available	Dispatched	Available	Dispatched	Available	Dispatched			
DAY	Sunday	30	3	7	0	3	0	5	0	3	0	48	3	6%
	Monday	55	21	19	15	8	5	13	4	9	2	104	47	45%
	Tuesday	36	12	4	0	5	0	10	1	7	0	62	13	21%
	Wednesday	38	14	6	0	4	0	6	4	6	0	60	18	30%
	Thursday	67	21	14	0	6	0	8	1	2	1	97	23	24%
	Friday	102	50	19	2	8	1	6	1	6	2	141	56	40%
	Saturday	106	79	21	5	8	0	3	1	5	0	143	85	59%
GRAVEYARD	Sunday	3	0	3	0	10	0	3	0	0	0	19	0	0%
	Monday	21	0	2	1	1	0	1	0	0	0	25	1	4%
	Tuesday	6	0	3	0	4	0	4	0	1	0	18	0	0%
	Wednesday	21	1	6	2	1	1	6	0	2	1	36	5	14%
	Thursday	21	0	5	0	2	0	2	0	0	0	30	0	0%
	Friday	28	0	8	0	3	0	4	0	3	0	46	0	0%
	Saturday	35	35	34	10	12	1	4	0	4	0	89	46	52%
NIGHT	Sunday	28	2	4	0	1	0	2	0	0	0	35	2	6%
	Monday	9	0	3	0	4	0	7	2	2	1	25	3	12%
	Tuesday	33	2	6	0	1	0	5	0	2	0	47	2	4%
	Wednesday	26	1	4	0	2	0	3	1	2	1	37	3	8%
	Thursday	33	3	7	0	3	0	6	2	5	1	54	6	11%
	Friday	74	38	24	1	9	0	4	1	6	1	117	41	35%
	Saturday	9	2	4	1	4	0	2	1	3	0	22	4	18%
Grand Total		781	284	203	37	99	8	104	19	68	10	1255	358	29%

June 9, 2009

Vancouver Casual Employee % Dispatched per Dispatch Board



UUVancouver Gang Stats June 2009 (as at June 8/09)

Shift	2/3 Man Special				Basic				Dock Gantry				Grain			
	Req	All	Rec	Shrt	Req	All	Rec	Shrt	Req	All	Rec	Shrt	Req	All	Rec	Shrt
Shift 1 (0100)	1	1	1	0	0	0	0	0	19	19	19	0	8	8	8	0
Shift 2 (0800)	4	4	4	0	2	2	2	0	19	19	19	0	36	36	36	0
Shift 3 (1630)	3	3	3	0	2	2	2	0	23	23	23	0	26	26	26	0
Totals:	8	8	8	0	4	4	4	0	61	61	61	0	70	70	70	0
Percent of Shortage:	0.00%				0.00%				0.00%				0.00%			

Squamish Gang Stats June 2009 (as at June 8/09)

Shift	2/3 Man Special				Basic				Dock Gantry			
	Req	All	Rec	Shrt	Req	All	Rec	Shrt	Req	All	Rec	Shrt
Shift 1 (0100)	0	0	0	0	0	0	0	0	0	0	0	0
Shift 2 (0800)	0	0	0	0	0	0	0	0	0	0	0	0
Shift 3 (1630)	0	0	0	0	0	0	0	0	0	0	0	0
Totals:	0	0	0	0	0	0	0	0	0	0	0	0
Percent of Shortage:	0.00%				0.00%				0.00%			

June 9, 2009

Vancouver Island Gang Stats June 2009 (as at June 8/09)

Shift	2/3 Man Special				Basic				Dock Gantry			
	Req	All	Rec	Shrt	Req	All	Rec	Shrt	Req	All	Rec	Shrt
Shift 1 (0100)	0	0	0	0	0	0	0	0	0	0	0	0
Shift 2 (0800)	0	0	0	0	21	21	21	0	0	0	0	0
Shift 3 (1630)	1	1	1	0	1	1	1	0	0	0	0	0
Totals:	1	1	1	0	22	22	22	0	0	0	0	0
Percent of Shortage:	0.00%				0.00%				0.00%			

Dispatch Shortage Stats for June 2009

Shortages at commencement and post dispatch, month-to-date June 8/09

0100 Shift					1630 Shift				
Rating	At	Shifts	Post	Shifts	Rating	At	Shifts	Post	Shifts
	Dispatch		Dispatch			Dispatch		Dispatch	
DOCK GANTRY	1	1	0	0	ELECTRICIAN (CERT)	1	1	0	0
DOW CHEMICALS	1	1	0	0	FIRST AID MAN	2	2	0	0
0800 Shift					H.D. MECH (CERT)	2	2	0	0
Rating	At	Shifts	Post	Shifts	MILLWRIGHT (CERT)	6	5	1	1
	Dispatch		Dispatch		RAIL PERSON	1	1	0	0
PLUMBER (CERT)	1	1	0	0	WELDER (CERT)	1	1	1	1

BCMEA SCHEDULED MEETINGS

Waterfront Industry Pension Plan (Trustees)

Wednesday June 10, 2009
9:30 AM – 1:00 PM
4th floor boardroom
349 Railway St

I.L.W.U. Health & Benefit Plan (Trustees)

Wednesday June 10, 2009
1:00 PM – 3:30 PM
4th floor boardroom
349 Railway St

Ship Owners

Friday June 12, 2009
9:00 AM – 4:00 PM
5th floor boardroom
349 Railway St

Container Sector

Tuesday June 16, 2009
9:00 – 11:00 AM
5th Floor Boardroom
349 Railway St

Grain Sector

Wednesday June 17, 2009
9:00 – 11:00 AM
5th Floor Boardroom
349 Railway St

Send your comments or contributions to the Bulletin's editor:

Gordon Clissold editor@bcmea.com 604-694-2318