

May 26, 2009

## Union Meeting Nights – June 2009

The Union Meeting Nights for June 2009 are as follows:

Vancouver (500)	Wednesday	June 17, 2009
New Westminster (502)	Wednesday	June 17, 2009
Chemainus (508)	Monday	June 8, 2009
Prince Rupert (505)	Tuesday	June 9, 2009

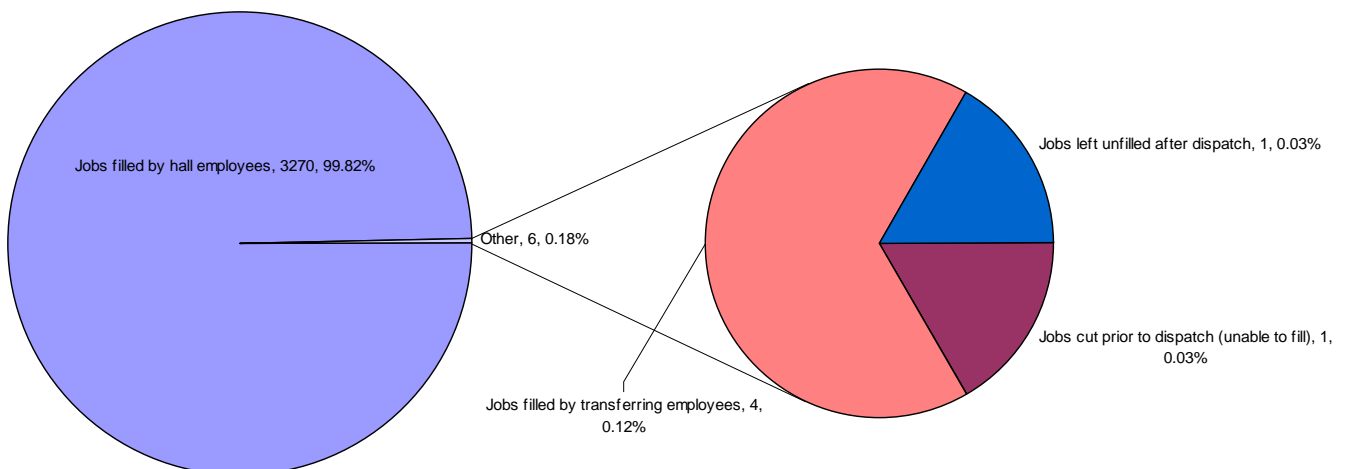
Please be guided by the provisions of Article 15 in the Collective Agreement respecting working restrictions and conditions on Union Meeting Nights.

## DISPATCH SHORTAGE STATISTICS

For Period: Sunday, May 17, 2009 to Saturday, May 23, 2009

job	Jobs cut prior to dispatch (unable to fill)	Jobs filled thru employee extensions	Jobs filled by employee double shifting	Jobs filled by local 502 employees	Jobs filled by transferring employees	Jobs left unfilled after dispatch	TOTAL
ELECTRICIAN						1	1
MEN					1		1
RAIL PERSON					1		1
RUBBER TIRE GTY	1						1
SWITCHMAN					2		2
<b>TOTAL</b>	<b>1</b>				<b>4</b>	<b>1</b>	<b>6</b>

*Explains how shortages were managed by Dispatch*





May 26, 2009

Agent Vessel Forecast Statistics for past 28 days: April 26, 2009 - May 23, 2009		
Number of Companies with working vessels during this period		27
Number of participating companies		24
Participation Levels :	Very High	8
	High	9
	Moderate	7
	Low	0
Average accuracy level		52.95%
Maximum accuracy level		96.88%
Minimum accuracy level		16.67%

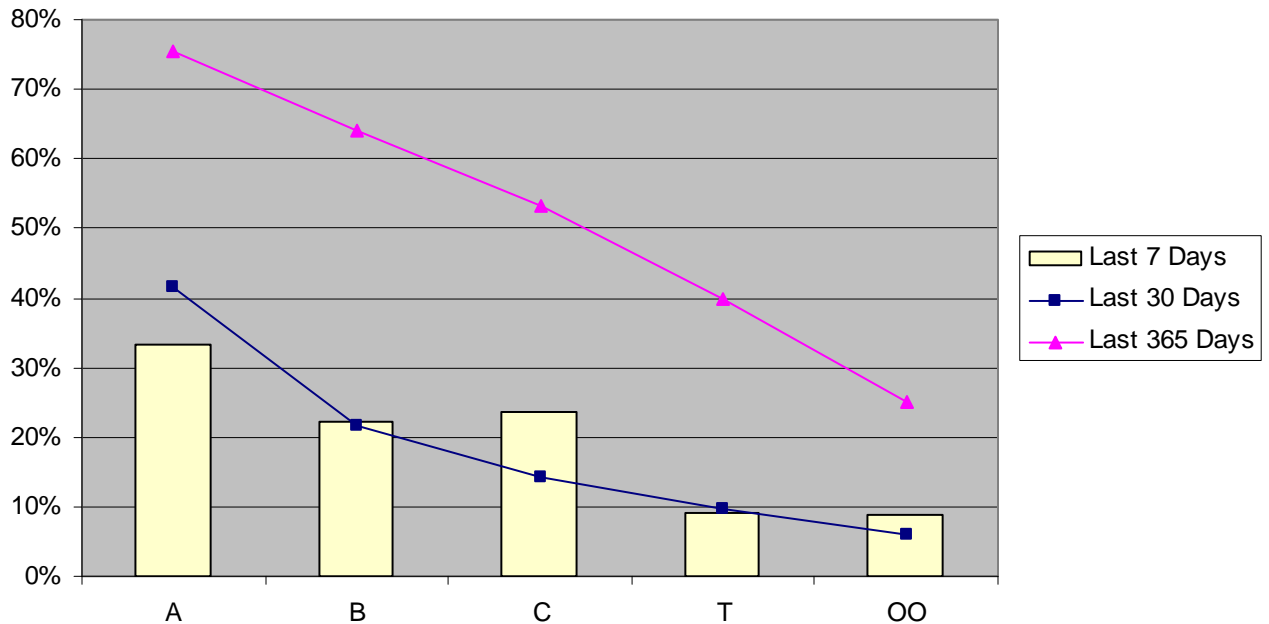
Agent Participation and Accuracy Explanation		
<p>Overall Agent Accuracy is based on the forecasting information supplied by the agent compared to the final state of the forecast as supplied by despatch. Agent participation is calculated based on the efforts of the agent in providing forecasting information via the Agent Vessel Forecast System. Participation is based on the comparison between the <u>number</u> of forecasted shifts as against the number of working shifts. Forecast accuracy is based on forecasted shifts and gangs <u>matching</u> with working shifts and gangs.</p>		Percentage of working shifts forecasted
	Very High	More than 90%
	High	61% to 90%
	Moderate	31% to 60%
	Low	up to 30%

## Vancouver Dispatch - Casual Employee Utilization (May 17, 2009 - May 23, 2009)

Shift	Week Day	A Board		B Board		C Board		T Board		00 Board		Total Available	Total Dispatched	% Dispatched
		Available	Dispatched	Available	Dispatched	Available	Dispatched	Available	Dispatched	Available	Dispatched			
DAY	Sunday	39	1	10	0	4	0	4	0	2	0	59	1	2%
	Monday	8	0	2	0	0	0	0	0	0	0	10	0	0%
	Tuesday	114	45	37	10	14	0	13	5	11	1	189	61	32%
	Wednesday	59	10	15	5	6	1	7	4	8	2	95	22	23%
	Thursday	78	23	12	0	8	2	10	3	3	0	111	28	25%
	Friday	62	62	52	51	68	44	41	5	31	0	254	162	64%
	Saturday	106	84	49	5	23	0	8	0	7	0	193	89	46%
GRAVEYARD	Sunday	9	1	4	0	2	0	1	0	1	0	17	1	6%
	Monday	20	0	6	0	4	0	0	0	3	0	33	0	0%
	Tuesday	6	0	2	0	3	0	3	0	0	0	14	0	0%
	Wednesday	26	2	13	1	9	0	3	0	4	0	55	3	5%
	Thursday	42	1	4	1	5	0	0	0	4	0	55	2	4%
	Friday	64	29	22	1	27	3	8	0	5	1	126	34	27%
	Saturday	16	2	1	0	5	1	31	1	5	0	58	4	7%
NIGHT	Sunday	26	1	5	0	4	0	0	0	2	0	37	1	3%
	Monday	8	2	0	0	3	0	3	0	1	0	15	2	13%
	Tuesday	49	9	23	1	11	2	4	1	7	1	94	14	15%
	Wednesday	64	4	5	2	8	1	1	1	7	1	85	9	11%
	Thursday	54	7	6	0	13	0	5	1	6	2	84	10	12%
	Friday	12	12	2	2	25	22	37	0	11	3	87	39	45%
	Saturday	11	2	5	0	5	0	3	0	0	0	24	2	8%
<b>Grand Total</b>		<b>873</b>	<b>297</b>	<b>275</b>	<b>79</b>	<b>247</b>	<b>76</b>	<b>182</b>	<b>21</b>	<b>118</b>	<b>11</b>	<b>1695</b>	<b>484</b>	<b>29%</b>

May 26, 2009

## Vancouver Casual Employee % Dispatched per Dispatch Board



## Vancouver Gang Stats May 2009 (as at May 25/09)

Shift	2/3 Man Special				Basic				Dock Gantry				Grain			
	Req	All	Rec	Shrt	Req	All	Rec	Shrt	Req	All	Rec	Shrt	Req	All	Rec	Shrt
Shift 1 (0100)	0	0	0	0	9	9	9	0	66	66	66	0	26	26	26	0
Shift 2 (0800)	12	12	12	0	50	50	50	0	81	81	81	0	113	113	113	0
Shift 3 (1630)	7	7	7	0	30	30	30	0	80	80	80	0	78	78	78	0
<b>Totals:</b>	<b>19</b>	<b>19</b>	<b>19</b>	<b>0</b>	<b>89</b>	<b>89</b>	<b>89</b>	<b>0</b>	<b>227</b>	<b>227</b>	<b>227</b>	<b>0</b>	<b>217</b>	<b>217</b>	<b>217</b>	<b>0</b>
<b>Percent of Shortage:</b>	<b>0.00%</b>				<b>0.00%</b>				<b>0.00%</b>				<b>0.00%</b>			

## Squamish Gang Stats May 2009 (as at May 25/09)

Shift	2/3 Man Special				Basic				Dock Gantry			
	Req	All	Rec	Shrt	Req	All	Rec	Shrt	Req	All	Rec	Shrt
Shift 1 (0100)	0	0	0	0	7	7	7	0	0	0	0	0
Shift 2 (0800)	0	0	0	0	12	12	12	0	0	0	0	0
Shift 3 (1630)	0	0	0	0	8	8	8	0	0	0	0	0
<b>Totals:</b>	<b>0</b>	<b>0</b>	<b>0</b>	<b>0</b>	<b>27</b>	<b>27</b>	<b>27</b>	<b>0</b>	<b>0</b>	<b>0</b>	<b>0</b>	<b>0</b>
<b>Percent of Shortage:</b>	<b>0.00%</b>				<b>0.00%</b>				<b>0.00%</b>			

May 26, 2009

## Vancouver Island Gang Stats May 2009 (as at May 25/09)

Shift	2/3 Man Special				Basic				Dock Gantry			
	Req	All	Rec	Shrt	Req	All	Rec	Shrt	Req	All	Rec	Shrt
Shift 1 (0100)	0	0	0	0	0	0	0	0	0	0	0	0
Shift 2 (0800)	4	4	4	0	23	23	23	0	0	0	0	0
Shift 3 (1630)	2	2	2	0	19	19	19	0	0	0	0	0
<b>Totals:</b>	<b>6</b>	<b>6</b>	<b>6</b>	<b>0</b>	<b>42</b>	<b>42</b>	<b>42</b>	<b>0</b>	<b>0</b>	<b>0</b>	<b>0</b>	<b>0</b>
<b>Percent of Shortage:</b>	<b>0.00%</b>				<b>0.00%</b>				<b>0.00%</b>			

## Dispatch Shortage Stats for May 2009

*Shortages at commencement and post dispatch, month-to-date May 25/09*

0100 Shift					1630 Shift				
Rating	At	Shifts	Post	Shifts	Rating	At	Shifts	Post	Shifts
	Dispatch		Dispatch			Dispatch		Dispatch	
DOCK GANTRY	4	2	0	0	BOMBARDIER	1	1	0	0
ELECTRICIAN (CERT)	1	1	1	1	ELECTRICIAN (CERT)	1	1	0	0
H.D. MECH (CERT)	1	1	0	0	MILLWRIGHT (CERT)	1	1	0	0
SHIP GANTRY	2	2	0	0	MOBILE CRANE (C.W.)	1	1	0	0
0800 Shift					P.M. BULK LIQUID OP.	2	2	0	0
Rating	At	Shifts	Post	Shifts	SHIP GANTRY	2	1	0	0
	Dispatch		Dispatch		TOPSIDE	2	1	0	0
PLUMBER (CERT)	1	1	0	0	VT CHECKER	1	1	0	0
SHIP GANTRY	1	1	0	0	WELDER (CERT)	1	1	1	1

Send your comments or contributions  
to the Bulletin's editor:

Gordon Clissold

[editor@bcmea.com](mailto:editor@bcmea.com)

604-694-2318