

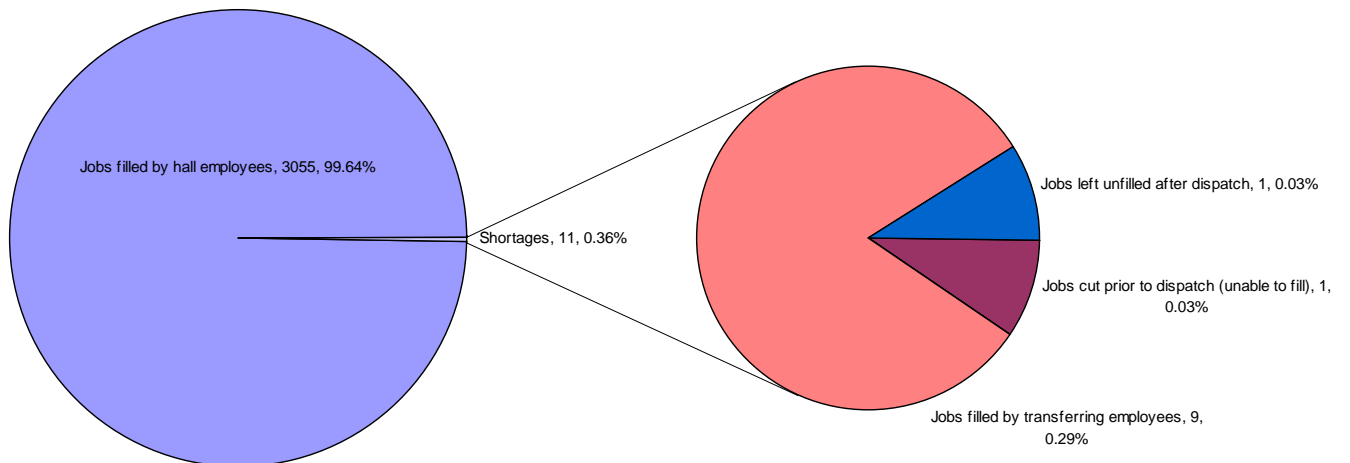
May 19, 2009

DISPATCH SHORTAGE STATISTICS

For Period: Sunday, May 10, 2009 to Saturday, May 16, 2009

job	Jobs cut prior to dispatch (unable to fill)	Jobs filled thru employee extensions	Jobs filled by employee double shifting	Jobs filled by local 502 employees	Jobs filled by transferring employees	Jobs left unfilled after dispatch	TOTAL
40 TON	1						1
BOMBARDIER					2		2
BULLDOZER					2		2
H.D. MECHANIC						1	1
MOBILE CRANE OP					3		3
WELDER					1		1
WHEAT SPECIALTY					1		1
TOTAL	1				9	1	11

Explains how shortages were managed by Dispatch



BCMEA Bulletin



May 19, 2009

Agent Vessel Forecast Statistics for past 28 days: April 19, 2009 - May 16, 2009		
Number of Companies with working vessels during this period		26
Number of participating companies		24
Participation Levels :		
	Very High	10
	High	9
	Moderate	4
	Low	1
Average accuracy level		53.62%
Maximum accuracy level		93.75%
Minimum accuracy level		15.39%

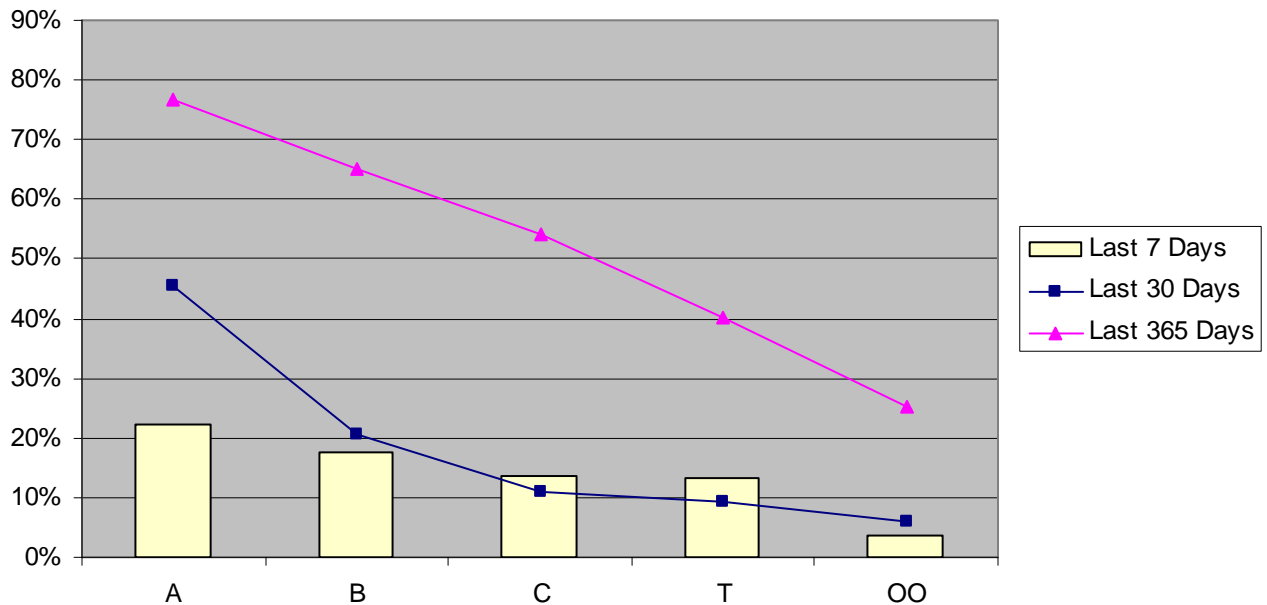
Agent Participation and Accuracy Explanation		
<p>Overall Agent Accuracy is based on the forecasting information supplied by the agent compared to the final state of the forecast as supplied by despatch. Agent participation is calculated based on the efforts of the agent in providing forecasting information via the Agent Vessel Forecast System. Participation is based on the comparison between the <u>number</u> of forecasted shifts as against the number of working shifts. Forecast accuracy is based on forecasted shifts and gangs <u>matching</u> with working shifts and gangs.</p>		Percentage of working shifts forecasted
	Very High	More than 90%
	High	61% to 90%
	Moderate	31% to 60%
	Low	up to 30%

Vancouver Dispatch - Casual Employee Utilization (May 10, 2009 - May 16, 2009)

Shift	Week Day	A Board		B Board		C Board		T Board		00 Board		Total Available	Total Dispatched	% Dispatched
		Available	Dispatched	Available	Dispatched	Available	Dispatched	Available	Dispatched	Available	Dispatched			
DAY	Sunday	41	3	7	0	5	0	5	0	2	0	60	3	5%
	Monday	100	25	28	10	16	1	13	4	8	0	165	40	24%
	Tuesday	55	15	11	0	9	1	14	0	4	0	93	16	17%
	Wednesday	44	0	9	1	5	1	7	0	5	0	70	2	3%
	Thursday	83	17	19	3	10	1	11	3	6	0	129	24	19%
	Friday	45	9	16	3	9	2	9	2	8	0	87	16	18%
	Saturday	63	59	36	32	28	9	10	0	10	0	147	100	68%
GRAVEYARD	Sunday	10	0	5	1	4	0	2	0	2	0	23	1	4%
	Monday	32	0	3	0	4	1	1	0	3	0	43	1	2%
	Tuesday	13	0	3	1	5	1	2	0	2	0	25	2	8%
	Wednesday	36	0	9	0	8	1	3	0	1	0	57	1	2%
	Thursday	26	0	3	0	4	0	1	0	2	0	36	0	0%
	Friday	58	0	18	0	6	0	5	0	7	1	94	1	1%
	Saturday	57	31	32	1	12	1	6	1	0	0	107	34	32%
NIGHT	Sunday	41	5	5	2	4	0	1	0	2	0	53	7	13%
	Monday	17	4	11	2	7	1	4	0	5	0	44	7	16%
	Tuesday	62	10	13	1	8	1	5	1	4	0	92	13	14%
	Wednesday	9	0	1	0	1	0	6	5	3	0	20	5	25%
	Thursday	91	16	26	0	8	0	7	0	6	0	138	16	12%
	Friday	54	9	13	0	9	2	6	1	5	2	87	14	16%
	Saturday	9	2	6	0	3	0	5	0	4	1	27	3	11%
Grand Total		946	205	274	57	165	23	123	17	89	4	1597	306	19%

May 19, 2009

Vancouver Casual Employee % Dispatched per Dispatch Board



Vancouver Gang Stats May 2009 (as at May 18/09)

Shift	2/3 Man Special				Basic				Dock Gantry				Grain			
	Req	All	Rec	Shrt	Req	All	Rec	Shrt	Req	All	Rec	Shrt	Req	All	Rec	Shrt
Shift 1 (0100)	0	0	0	0	8	8	8	0	54	54	54	0	21	21	21	0
Shift 2 (0800)	12	12	12	0	32	32	32	0	60	60	60	0	75	75	75	0
Shift 3 (1630)	7	7	7	0	24	24	24	0	53	53	53	0	54	54	54	0
Totals:	19	19	19	0	64	64	64	0	167	167	167	0	150	150	150	0
Percent of Shortage:	0.00%				0.00%				0.00%				0.00%			

Squamish Gang Stats May 2009 (as at May 18/09)

Shift	2/3 Man Special				Basic				Dock Gantry			
	Req	All	Rec	Shrt	Req	All	Rec	Shrt	Req	All	Rec	Shrt
Shift 1 (0100)	0	0	0	0	5	5	5	0	0	0	0	0
Shift 2 (0800)	0	0	0	0	8	8	8	0	0	0	0	0
Shift 3 (1630)	0	0	0	0	5	5	5	0	0	0	0	0
Totals:	0	0	0	0	18	18	18	0	0	0	0	0
Percent of Shortage:	0.00%				0.00%				0.00%			

May 19, 2009

Vancouver Island Gang Stats May 2009 (as at May 18/09)

Shift	2/3 Man Special				Basic				Dock Gantry			
	Req	All	Rec	Shrt	Req	All	Rec	Shrt	Req	All	Rec	Shrt
Shift 1 (0100)	0	0	0	0	0	0	0	0	0	0	0	0
Shift 2 (0800)	4	4	4	0	12	12	12	0	0	0	0	0
Shift 3 (1630)	2	2	2	0	12	12	12	0	0	0	0	0
Totals:	6	6	6	0	24	24	24	0	0	0	0	0
Percent of Shortage:	0.00%				0.00%				0.00%			

Dispatch Shortage Stats for May 2009

Shortages at commencement and post dispatch, month-to-date May 18/09

0100 Shift					1630 Shift				
Rating	At	Shifts	Post	Shifts	Rating	At	Shifts	Post	Shifts
	Dispatch		Dispatch			Dispatch		Dispatch	
ELECTRICIAN (CERT)	1	1	1	1	BOMBARDIER	1	1	0	0
SHIP GANTRY	2	2	0	0	ELECTRICIAN (CERT)	1	1	0	0
0800 Shift					MILLWRIGHT (CERT)	1	1	0	0
Rating	At	Shifts	Post	Shifts	MOBILE CRANE (C.W.)	1	1	0	0
	Dispatch		Dispatch		P.M. BULK LIQUID OP.	2	2	0	0
PLUMBER (CERT)	1	1	0	0	SHIP GANTRY	2	1	0	0
SHIP GANTRY	1	1	0	0	TOPSIDE	2	1	0	0
					VT CHECKER	1	1	0	0
					WELDER (CERT)	1	1	1	1

BCMEA SCHEDULED MEETINGS

Direct Employers Committee (Pool Foremen)

Thursday May 21, 2009
2:00 PM – 4:00 PM
5th floor boardroom
349 Railway St

Waterfront Foremen's Welfare Plan (Trustees)

Friday May 22, 2009
9:30 AM – 12:00 NOON
4th floor boardroom
349 Railway St

Victoria Day

For your information and guidance, Victoria Day fell this year on Monday, May 18, 2009.

Victoria Day is a "Recognized Holiday" in the Collective Agreement and work may be performed on that day in accordance with the provisions of the Agreement

Send your comments or contributions to the Bulletin's editor:

Gordon Clissold ♦ editor@bcmea.com ♦ 604-694-2318