

May 5, 2009

ADDITIONAL FOREMEN RETRO #4

The final scheduled foremen retro was paid on April 29, 2009. Due to an oversight, the vacation pay on 2007 retro vacation pay was missed in the final retro run. Therefore, it will be necessary to process one additional retro payment to complete the retro cycle. To recap, the full retro cycle consisted of the following payments:

Retro #1 - March 18/09	Regular earnings Apr 1/07 to Dec 31/07 (\$42.81 STBR)
Retro #2 - April 8/09	Regular earnings Jan 1/08 to Mar 31/08 (\$42.81 STBR) Vacation pay on retro #1 Regular earnings Apr 1/08 to Dec 31/08 (\$44.41 STBR)
Retro #3 - April 29/09	Regular earnings Jan 1/09 to Mar 31/09 (\$44.41 STBR) Vacation pay on retro #2 regular earnings Jan 1/08 to Dec 31/08 2008 Boot Allowance
Retro #4 - May 13/09	Vacation pay on vacation pay from retro #1

Payment of retro #4 to the foremen will take place on Wednesday, May 13th and funding for that retro payment will also be collected from member companies on Wednesday, May 13th, along with the regular weekly payroll.

BCMEA RAISES AWARENESS OF WEST COAST PORTS DURING ASIAN TRADE MISSION

The BCMEA joined with International Trade Minister, Stockwell Day, and a Canadian business delegation on a Pacific Gateway mission to Asia in mid April.

BCMEA's Vice President Marketing & Information Services, Greg Vurdela, met with shippers, manufacturers and other business contacts in Seoul, Tokyo, Osaka and Nagoya during the five-day Trade Mission, promoting the competitive advantages of shipping their products through Canada's Pacific Gateway.



BCMEA VP Marketing & Information Services, Greg Vurdela, (fifth from left) with the Canadian business delegation at a Honda facility.

May 5, 2009

PAYROLL REMITTANCE CHANGES EFFECTIVE MAY 1, 2009

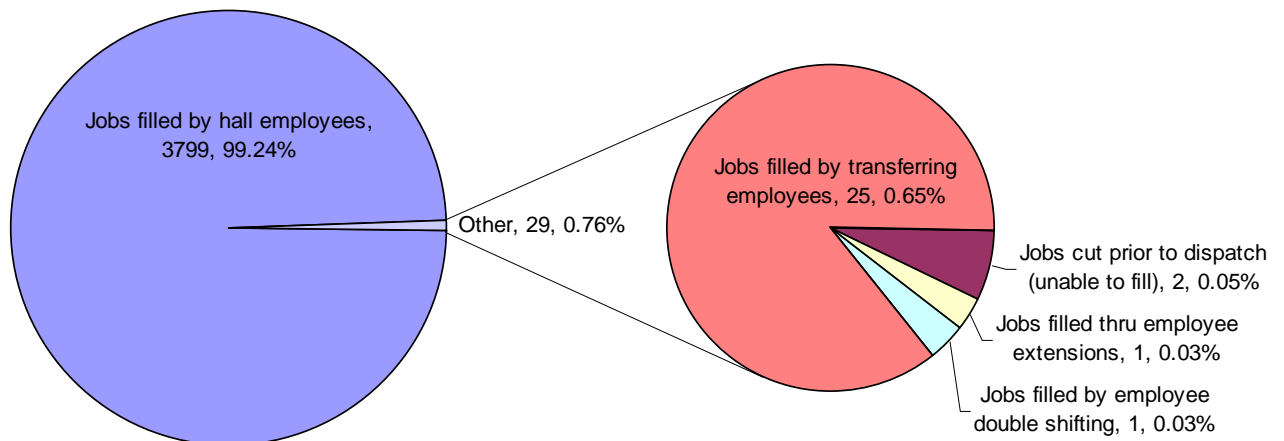
At the BCMEA Board meeting held on March 25, 2009, the Association's Directors approved a motion "that all payroll participants be required to fund their weekly payroll obligations using a wire transfer or bank draft in place of uncertified cheques." This requirement took effect May 1, 2009 and will affect payments commencing with the May 6th payroll funding.

DISPATCH SHORTAGE STATISTICS

For Period: Sunday, April 26, 2009 to Saturday, May 2, 2009

job	Jobs cut prior to dispatch (unable to fill)	Jobs filled thru employee extensions	Jobs filled by employee double shifting	Jobs filled by local 502 employees	Jobs filled by transferring employees	Jobs left unfilled after dispatch	TOTAL
40 TON & RACK					2		2
BOMBARDIER					2		2
BULK OPERATOR					4		4
DOCK GANTRY					3		3
ELECTRICIAN					1		1
H.D. MECHANIC					1		1
HEAD CHKR		1					1
HT SIGNALS					3		3
RUBBER TIRE GTY	1				2		3
SPARES	1						1
WELDER			1				1
WHEAT MACHINE					2		2
WHEAT SPECIALTY					4		4
WINCH DRIVER					1		1
TOTAL	2	1	1		25		29

Explains how shortages were managed by Dispatch



BCMEA Bulletin



May 5, 2009

Agent Vessel Forecast Statistics for past 28 days: April 5, 2009 - May 2, 2009		
Number of Companies with working vessels during this period		24
Number of participating companies		22
Participation Levels :		
	Very High	13
	High	6
	Moderate	3
	Low	0
Average accuracy level		63.30%
Maximum accuracy level		93.45%
Minimum accuracy level		35.71%

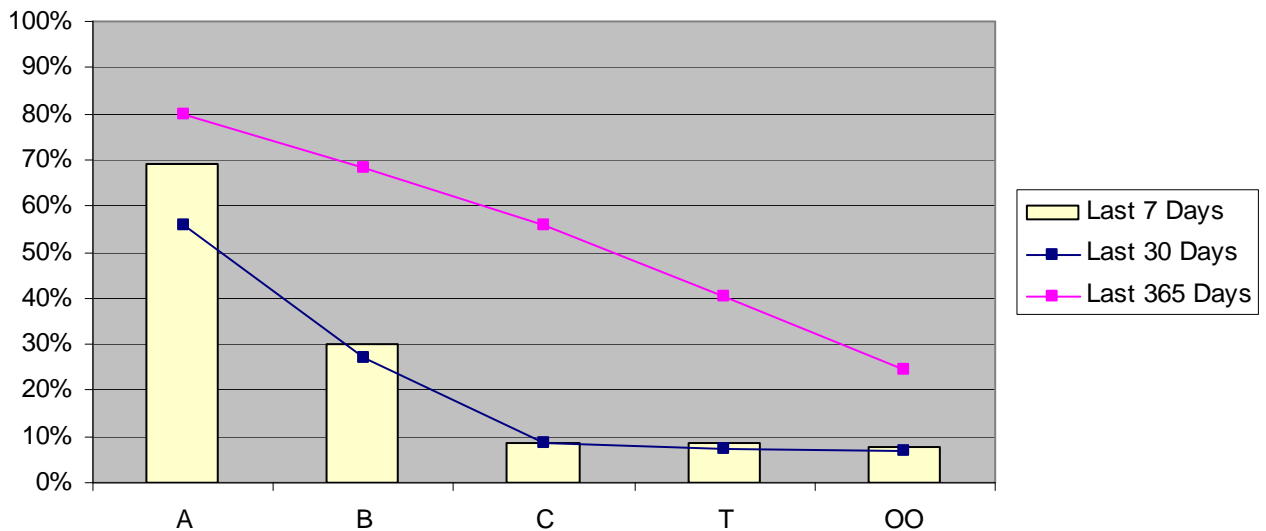
Agent Participation and Accuracy Explanation		
Overall Agent Accuracy is based on the forecasting information supplied by the agent compared to the final state of the forecast as supplied by despatch. Agent participation is calculated based on the efforts of the agent in providing forecasting information via the Agent Vessel Forecast System. Participation is based on the comparison between the <u>number</u> of forecasted shifts as against the number of working shifts. Forecast accuracy is based on forecasted shifts and gangs <u>matching</u> with working shifts and gangs.		Percentage of working shifts forecasted
		Very High
		High
		Moderate
		Low
		More than 90%
		61% to 90%
		31% to 60%
		up to 30%

Vancouver Dispatch - Casual Employee Utilization (Apr. 26, 2009 - May 2, 2009)

Shift	Week Day	A Board		B Board		C Board		T Board		00 Board		Total Available	Total Dispatched	% Dispatched
		Available	Dispatched	Available	Dispatched	Available	Dispatched	Available	Dispatched	Available	Dispatched			
DAY	Sunday	22	1	7	1	1	0	5	1	2	1	37	4	11%
	Monday	119	118	63	17	43	6	36	5	23	1	284	147	52%
	Tuesday	70	57	42	0	25	2	15	4	20	0	172	63	37%
	Wednesday	57	44	12	2	9	1	5	2	13	2	96	51	53%
	Thursday	67	67	34	21	29	1	17	0	16	0	163	89	55%
	Friday	68	45	13	0	10	1	8	0	6	3	105	49	47%
	Saturday	78	78	19	10	18	3	10	0	8	0	133	91	68%
GRAVEYARD	Sunday	33	3	6	0	6	0	2	0	3	0	50	3	6%
	Monday	40	11	20	1	4	0	4	2	2	2	70	16	23%
	Tuesday	11	0	16	1	23	2	11	0	7	0	68	3	4%
	Wednesday	19	0	12	1	11	2	4	0	8	0	54	3	6%
	Thursday	34	33	43	4	37	1	25	2	12	0	151	40	26%
	Friday	30	20	8	0	20	1	10	1	6	0	74	22	30%
	Saturday	28	28	33	32	34	1	18	1	8	0	121	62	51%
NIGHT	Sunday	30	3	8	0	4	0	5	0	4	0	51	3	6%
	Monday	28	26	37	20	30	3	9	0	11	1	115	50	43%
	Tuesday	22	7	14	2	12	1	4	1	13	2	65	13	20%
	Wednesday	75	51	35	5	23	1	11	0	8	0	152	57	38%
	Thursday	27	24	15	13	22	5	10	0	8	1	82	43	52%
	Friday	46	46	39	16	29	2	12	1	8	2	134	67	50%
	Saturday	11	10	3	3	8	4	3	1	5	0	30	18	60%
Grand Total		915	672	479	149	398	37	224	21	191	15	2207	894	41%

May 5, 2009

Vancouver Casual Employee % Dispatched per Dispatch Board



Vancouver Gang Stats April 2009 (as at April 30/09)

Shift	2/3 Man Special				Basic				Dock Gantry				Grain			
	Req	All	Rec	Shrt	Req	All	Rec	Shrt	Req	All	Rec	Shrt	Req	All	Rec	Shrt
Shift 1 (0100)	16	16	16	0	10	10	10	0	100	100	100	0	55	55	55	0
Shift 2 (0800)	24	24	24	0	69	69	69	0	126	126	126	0	158	158	158	0
Shift 3 (1630)	20	20	20	0	38	38	38	0	123	123	123	0	121	121	121	0
Totals:	60	60	60	0	117	117	117	0	349	349	349	0	334	334	334	0
Percent of Shortage:	0.00%				0.00%				0.00%				0.00%			

Squamish Gang Stats April 2009 (as at April 30/09)

Shift	2/3 Man Special				Basic				Dock Gantry			
	Req	All	Rec	Shrt	Req	All	Rec	Shrt	Req	All	Rec	Shrt
Shift 1 (0100)	0	0	0	0	5	5	5	0	0	0	0	0
Shift 2 (0800)	0	0	0	0	32	32	32	0	0	0	0	0
Shift 3 (1630)	0	0	0	0	9	9	9	0	0	0	0	0
Totals:	0	0	0	0	46	46	46	0	0	0	0	0
Percent of Shortage:	0.00%				0.00%				0.00%			

May 5, 2009

Vancouver Island Gang Stats April 2009 (as at April 30/09)

Shift	2/3 Man Special				Basic				Dock Gantry			
	Req	All	Rec	Shrt	Req	All	Rec	Shrt	Req	All	Rec	Shrt
Shift 1 (0100)	0	0	0	0	0	0	0	0	0	0	0	0
Shift 2 (0800)	8	8	8	0	61	61	61	0	0	0	0	0
Shift 3 (1630)	7	7	7	0	13	13	13	0	0	0	0	0
Totals:	15	15	15	0	74	74	74	0	0	0	0	0
Percent of Shortage:	0.00%				0.00%				0.00%			

Dispatch Shortage Stats for April 2009

Shortages at commencement and post dispatch, month-to-date April 30/09

0100 Shift					0800 Shift				
Rating	At	Shifts	Post	Shifts	Rating	At	Shifts	Post	Shifts
	Dispatch		Dispatch			Dispatch		Dispatch	
BOMBARDIER	1	1	0	0	BOMBARDIER	4	4	0	0
DOCK GANTRY	7	3	0	0	CLASS #1 LIC. (AIR)	2	1	2	1
ELECTRICIAN (CERT)	1	1	1	1	DOCK GANTRY	9	5	0	0
FIBERCO PUSHER	1	1	0	0	DOW CHEMICALS	1	1	0	0
H.D. MECH (CERT)	5	4	3	3	H.D.MECH (CERT)	10	6	8	5
MILLWRIGHT (CERT)	1	1	1	1	HLT (WHITE DOT)	6	3	0	0
SHIP GANTRY	3	1	0	0	PLUMBER (CERT)	1	1	1	1
TOPSIDE	4	3	0	0	TOPSIDE	4	2	0	0
1630 Shift					TRACKMAN	8	5	4	2
Rating	At	Shifts	Post	Shifts	WELDER (CERT)	1	1	1	1
	Dispatch		Dispatch		WHEAT MACHINE	2	2	0	0
BULLDOZER (SHIP)	2	1	0	0	WHEAT SPECIALTY	2	2	0	0
DOCK GANTRY	15	6	0	0					
H.D. MECH (CERT)	7	7	4	4					
HLT (WHITE DOT)	5	2	0	0					
MILLWRIGHT (CERT)	1	1	0	0					
NEPTUNE TRUNK (B.O.)	1	1	0	0					
RAIL PERSON	1	1	0	0					
RED DOG CRANE OP.	2	1	0	0					
WELDER (CERT)	1	1	1	1					
WHEAT SPEC. PECO	1	1	0	0					

BCMEA SCHEDULED MEETINGS

Direct Employer Committee (Council Only)

Wednesday May 6, 2009
 9:30 AM – 12:00 NOON
 5th floor boardroom
 349 Railway St

Send your comments or contributions to the Bulletin's editor:

Gordon Clissold
editor@bcmea.com
 604-694-2318