

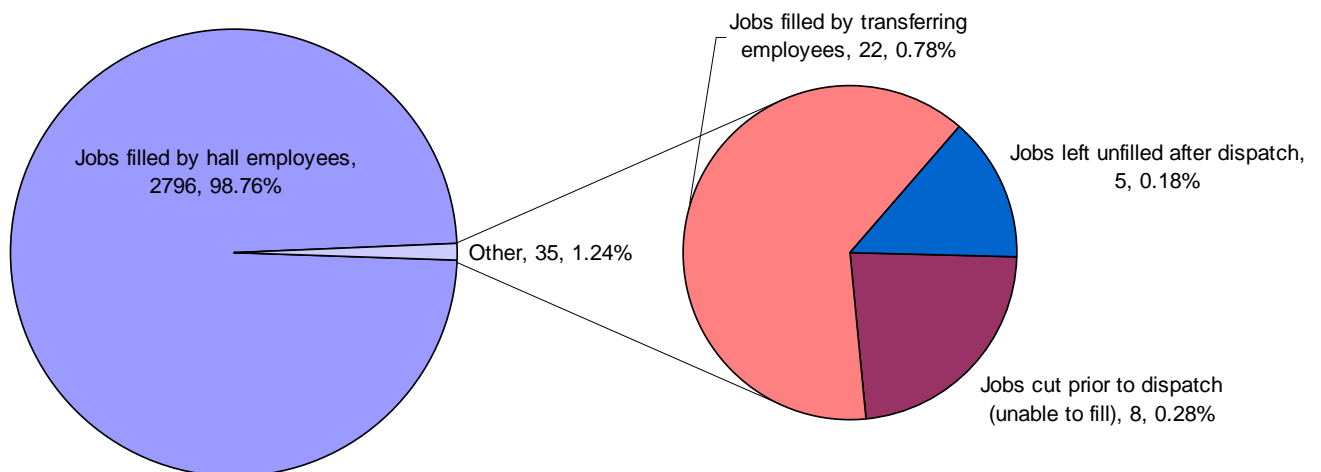
April 28 2009

DISPATCH SHORTAGE STATISTICS

For Period: Sunday, April 19, 2009 to Saturday, April 25, 2009

job	Jobs cut prior to dispatch (unable to fill)	Jobs filled thru employee extensions	Jobs filled by employee double shifting	Jobs filled by local 502 employees	Jobs filled by transferring employees	Jobs left unfilled after dispatch	TOTAL
40 TON & RACK					1		1
BOMBARDIER					3		3
BULK OPERATOR					3		3
CHECKER (DOCK)	1				1		2
DOCK GANTRY					2		2
DRIVER	2						2
H.D. MECHANIC	1					3	4
HEAD CHKR					2		2
HT SIGNALS					1		1
LABOUR	1						1
LOCIE ENGINEER					1		1
PLUMBER						1	1
RACK & S/HOIST	1						1
RAIL PERSON					1		1
RUBBER TIRE GTY	1				2		3
TRACTOR TRAILER						1	1
WHEAT SPECIALTY	1				5		6
TOTAL	8				22	5	35

Explains how shortages were managed by Dispatch



BCMEA Bulletin



April 28 2009

Agent Vessel Forecast Statistics for past 28 days: Mar. 29, 2009 - Apr. 25, 2009		
Number of Companies with working vessels during this period		24
Number of participating companies		22
Participation Levels :		
	Very High	10
	High	9
	Moderate	2
	Low	1
Average accuracy level		58.42%
Maximum accuracy level		79.76%
Minimum accuracy level		7.14%

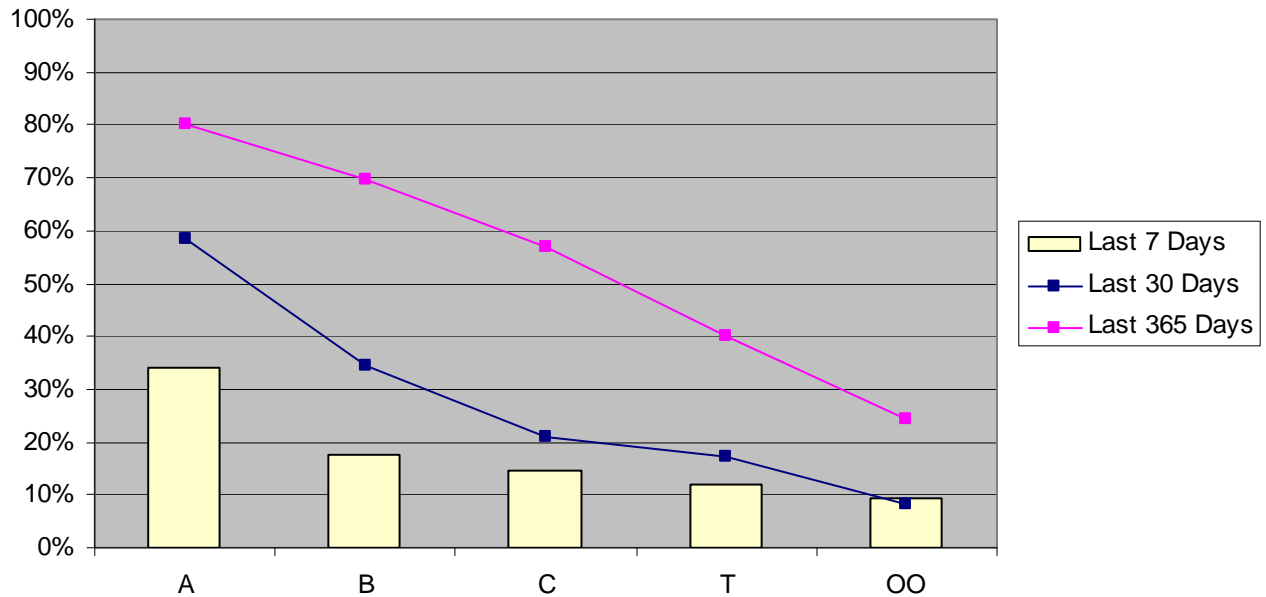
Agent Participation and Accuracy Explanation		
<p>Overall Agent Accuracy is based on the forecasting information supplied by the agent compared to the final state of the forecast as supplied by despatch. Agent participation is calculated based on the efforts of the agent in providing forecasting information via the Agent Vessel Forecast System. Participation is based on the comparison between the <u>number</u> of forecasted shifts as against the number of working shifts. Forecast accuracy is based on forecasted shifts and gangs <u>matching</u> with working shifts and gangs.</p>		Percentage of working shifts forecasted
	Very High	More than 90%
	High	61% to 90%
	Moderate	31% to 60%
	Low	up to 30%

Vancouver Dispatch - Casual Employee Utilization (Apr. 19, 2009 - Apr. 25, 2009)

Shift	Week Day	A Board		B Board		C Board		T Board		00 Board		Total Available	Total Dispatched	% Dispatched
		Available	Dispatched	Available	Dispatched	Available	Dispatched	Available	Dispatched	Available	Dispatched			
DAY	Sunday	17	1	2	1	1	1	3	1	0	0	23	4	17%
	Monday	95	95	50	20	29	4	21	2	17	2	212	123	58%
	Tuesday	98	42	35	2	18	2	10	1	8	0	169	47	28%
	Wednesday	48	16	9	2	10	2	10	1	10	0	87	21	24%
	Thursday	23	16	6	3	8	3	7	3	11	2	55	27	49%
	Friday	67	26	14	2	11	2	8	4	10	1	110	35	32%
	Saturday	70	13	10	4	4	0	5	1	4	0	93	18	19%
GRAVEYARD	Sunday	20	7	3	0	3	0	1	0	3	0	30	7	23%
	Monday	32	0	4	0	5	1	3	0	3	0	47	1	2%
	Tuesday	9	0	4	1	6	3	5	0	7	0	31	4	13%
	Wednesday	25	4	15	2	12	2	5	0	6	0	63	8	13%
	Thursday	9	2	10	0	6	0	2	0	4	0	31	2	6%
	Friday	33	1	8	0	5	1	1	0	8	1	55	3	5%
	Saturday	17	1	6	1	5	1	3	0	4	0	35	3	9%
NIGHT	Sunday	33	1	5	0	6	2	2	0	5	0	51	3	6%
	Monday	16	6	9	3	8	1	4	0	10	2	47	12	26%
	Tuesday	35	11	17	2	9	0	4	0	8	3	73	16	22%
	Wednesday	5	1	1	0	2	0	2	0	3	0	13	1	8%
	Thursday	40	7	11	1	4	0	2	0	10	1	67	9	13%
	Friday	48	26	12	2	6	1	2	1	6	3	74	33	45%
	Saturday	27	4	3	1	6	2	2	0	5	0	43	7	16%
Grand Total		767	280	234	47	164	28	102	14	142	15	1409	384	27%

April 28 2009

Vancouver Casual Employee % Dispatched per Dispatch Board



UUVancouver Gang Stats April 2009 (as at April 27/09)

Shift	2/3 Man Special				Basic				Dock Gantry				Grain			
	Req	All	Rec	Shrt	Req	All	Rec	Shrt	Req	All	Rec	Shrt	Req	All	Rec	Shrt
Shift 1 (0100)	14	14	14	0	10	10	10	0	90	90	90	0	49	49	49	0
Shift 2 (0800)	16	16	16	0	56	56	56	0	116	116	116	0	138	138	138	0
Shift 3 (1630)	13	13	13	0	33	33	33	0	111	111	111	0	104	104	104	0
Totals:	43	43	43	0	99	99	99	0	317	317	317	0	291	291	291	0
Percent of Shortage:	0.00%				0.00%				0.00%				0.00%			

Squamish Gang Stats April 2009 (as at April 27/09)

Shift	2/3 Man Special				Basic				Dock Gantry			
	Req	All	Rec	Shrt	Req	All	Rec	Shrt	Req	All	Rec	Shrt
Shift 1 (0100)	0	0	0	0	2	2	2	0	0	0	0	0
Shift 2 (0800)	0	0	0	0	30	30	30	0	0	0	0	0
Shift 3 (1630)	0	0	0	0	7	7	7	0	0	0	0	0
Totals:	0	0	0	0	39	39	39	0	0	0	0	0
Percent of Shortage:	0.00%				0.00%				0.00%			

April 28 2009

Vancouver Island Gang Stats April 2009 (as at April 27/09)

Shift	2/3 Man Special				Basic				Dock Gantry			
	Req	All	Rec	Shrt	Req	All	Rec	Shrt	Req	All	Rec	Shrt
Shift 1 (0100)	0	0	0	0	0	0	0	0	0	0	0	0
Shift 2 (0800)	8	8	8	0	53	53	53	0	0	0	0	0
Shift 3 (1630)	7	7	7	0	10	10	10	0	0	0	0	0
Totals:	15	15	15	0	63	63	63	0	0	0	0	0
Percent of Shortage:	0.00%				0.00%				0.00%			

Dispatch Shortage Stats for April 2009

Shortages at commencement and post dispatch, month-to-date April 27/09

0100 Shift					0800 Shift				
Rating	At	Shifts	Post	Shifts	Rating	At	Shifts	Post	Shifts
	Dispatch		Dispatch			Dispatch		Dispatch	
BOMBARDIER	1	1	0	0	BOMBARDIER	4	4	0	0
DOCK GANTRY	6	2	0	0	CLASS #1 LIC. (AIR)	2	1	2	1
ELECTRICIAN (CERT)	1	1	1	1	DOCK GANTRY	9	5	0	0
FIBERCO PUSHER	1	1	0	0	DOW CHEMICALS	1	1	0	0
H.D. MECH (CERT)	5	4	3	3	H.D.MECH (CERT)	10	6	8	5
MILLWRIGHT (CERT)	1	1	1	1	HLT (WHITE DOT)	6	3	0	0
SHIP GANTRY	3	1	0	0	PLUMBER (CERT)	1	1	1	1
TOPSIDE	4	3	0	0	TOPSIDE	4	2	0	0
1630 Shift					TRACKMAN	7	4	4	2
Rating	At	Shifts	Post	Shifts	WELDER (CERT)	1	1	1	1
	Dispatch		Dispatch		WHEAT MACHINE	2	2	0	0
BULLDOZER (SHIP)	2	1	0	0	WHEAT SPECIALTY	2	2	0	0
DOCK GANTRY	12	5	0	0					
H.D. MECH (CERT)	7	7	4	4					
HLT (WHITE DOT)	5	2	0	0					
MILLWRIGHT (CERT)	1	1	0	0					
NEPTUNE TRUNK (B.O.)	1	1	0	0					
RAIL PERSON	1	1	0	0					
RED DOG CRANE OP.	2	1	0	0					
WELDER (CERT)	1	1	1	1					
WHEAT SPEC. PECO	1	1	0	0					

BCMEA SCHEDULED MEETINGS

Direct Employer Committee (Council Only)

Wednesday May 6, 2009
 9:30 AM – 12:00 NOON
 5th floor boardroom
 349 Railway St

Send your comments or contributions to the Bulletin's editor:

Gordon Clissold
editor@bcmea.com
 604-694-2318