

April 21, 2009

FOREMEN'S RETRO-ACTIVE PAY SCHEDULE

The last retroactive payment arising from the ILWU Ship and Dock Foremen Local 514 contract settlement is scheduled for **April 29/09**.

This will include:

- 1) regular earnings Jan 1/09 to Mar 31/09 (\$44.41 STBR)
- 2) vacation pay on retro #2

The member companies are responsible for all costs associated with this payment and therefore there will not be credit invoices issued for these costs.

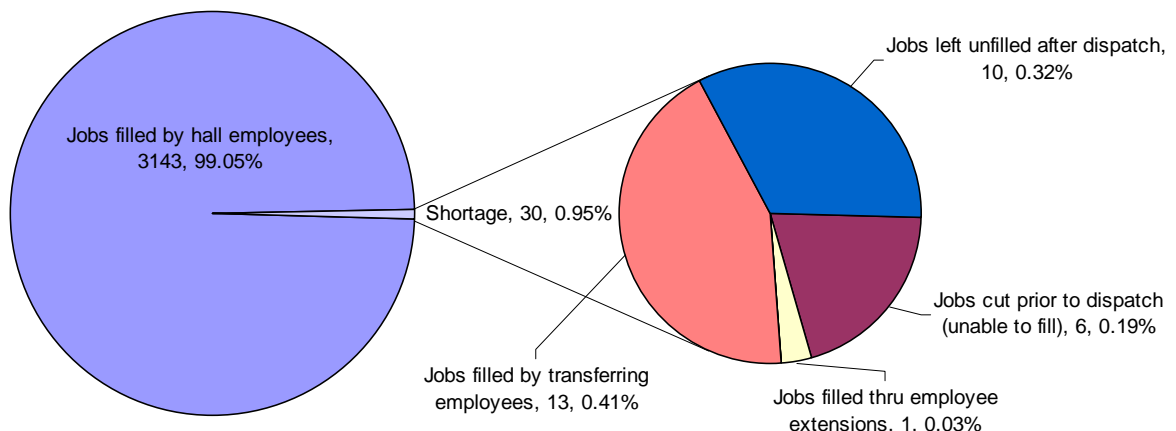
There will also be a \$125.00 retroactive Boot Allowance paid to eligible foremen along with this retro payment run. The costs for the boot allowance will appear on company retro invoices as a charge under "Less Deduction Made on Behalf of Company". A credit invoice will be issued for the boot allowance cost only.

DISPATCH SHORTAGE STATISTICS

For Period: Sunday, April 12, 2009 to Saturday, April 18, 2009

job	Jobs cut prior to dispatch (unable to fill)	Jobs filled thru employee extensions	Jobs filled by employee double shifting	Jobs filled by local 502 employees	Jobs filled by transferring employees	Jobs left unfilled after dispatch	TOTAL
40 TON					3		3
BOMBARDIER					1		1
BULLDOZER(SHIP)					3		3
CLASS #1 AIR						1	1
DOCK GANTRY		1			3		4
F.E.L.	1						1
H.D. MECHANIC						1	1
HT SIGNALS	1						1
MEN	2						2
MEN - LASHING						2	2
RACK & S/HOIST					2		2
RUBBER TIRE GTY					1		1
TRAC.TRAIL. (S)	2						2
TRACKMAN						5	5
WELDER						1	1
TOTAL	6	1			13	10	30

Explains how shortages were managed by Dispatch



BCMEA Bulletin



April 21, 2009

Agent Vessel Forecast Statistics for past 28 days: Mar. 22, 2009 - Apr. 18, 2009		
Number of Companies with working vessels during this period	26	
Number of participating companies	24	
Participation Levels :	Very High	11
	High	9
	Moderate	1
	Low	1
Average accuracy level	57.67%	
Maximum accuracy level	82.44%	
Minimum accuracy level	2.50%	

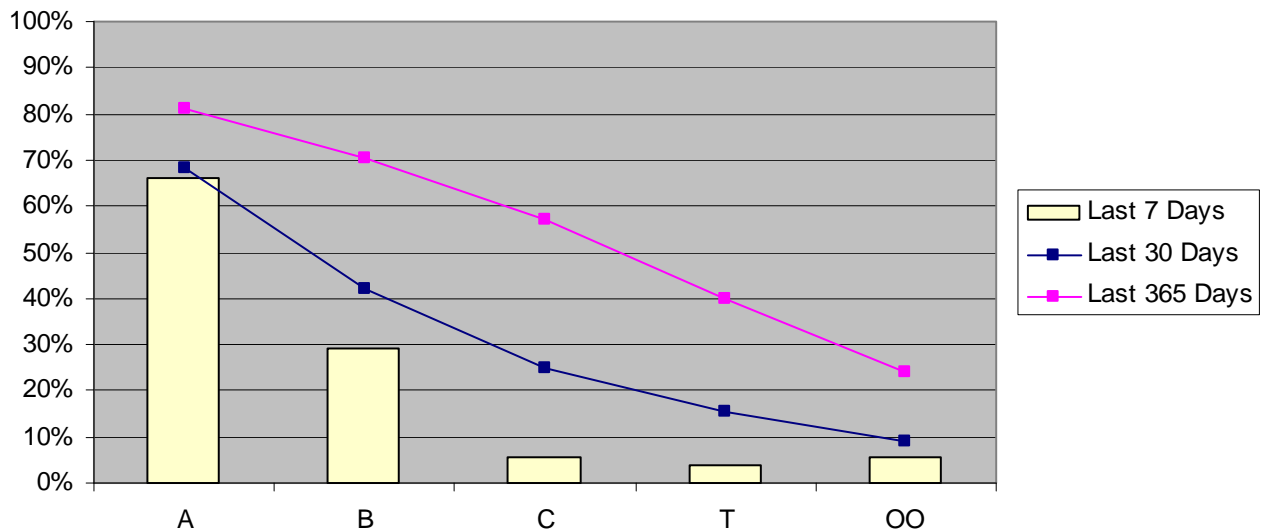
Agent Participation and Accuracy Explanation		
<p>Overall Agent Accuracy is based on the forecasting information supplied by the agent compared to the final state of the forecast as supplied by despatch. Agent participation is calculated based on the efforts of the agent in providing forecasting information via the Agent Vessel Forecast System. Participation is based on the comparison between the <u>number</u> of forecasted shifts as against the number of working shifts. Forecast accuracy is based on forecasted shifts and gangs <u>matching</u> with working shifts and gangs.</p>	Percentage of working shifts forecasted	
	Very High	More than 90%
	High	61% to 90%
	Moderate	31% to 60%
	Low	up to 30%

Vancouver Dispatch - Casual Employee Utilization (Apr. 12, 2009 - Apr. 18, 2009)

Shift	Week Day	A Board		B Board		C Board		T Board		00 Board		Total Available	Total Dispatched	% Dispatched
		Available	Dispatched	Available	Dispatched	Available	Dispatched	Available	Dispatched	Available	Dispatched			
DAY	Sunday	11	0	1	0	0	0	3	0	0	0	15	0	0%
	Monday	8	0	2	0	1	0	3	0	2	0	16	0	0%
	Tuesday	91	88	48	23	43	2	33	2	29	0	244	115	47%
	Wednesday	66	50	16	2	14	3	9	0	12	2	117	57	49%
	Thursday	64	47	24	2	24	3	15	3	9	1	136	56	41%
	Friday	38	24	6	2	9	0	10	3	5	3	68	32	47%
Saturday	54	45	28	2	9	0	10	0	6	0	107	47	44%	
GRAVEYARD	Sunday	7	0	0	0	3	0	2	0	2	0	14	0	0%
	Monday	45	32	14	0	4	0	3	0	1	0	67	32	48%
	Tuesday	4	0	1	0	2	0	2	0	2	1	11	1	9%
	Wednesday	10	5	7	3	61	1	57	0	27	0	162	9	6%
	Thursday	22	21	6	4	9	2	2	0	3	0	42	27	64%
	Friday	13	0	13	0	23	2	7	0	8	1	64	3	5%
Saturday	43	37	32	2	26	2	17	0	8	0	126	41	33%	
NIGHT	Sunday	25	1	2	0	1	0	2	0	2	1	32	2	6%
	Monday	4	0	0	0	1	0	2	0	3	0	10	0	0%
	Tuesday	50	45	44	35	67	1	63	0	36	0	260	81	31%
	Wednesday	24	17	7	4	7	1	3	0	8	1	49	23	47%
	Thursday	40	35	28	9	21	1	5	0	10	1	104	46	44%
	Friday	52	18	27	3	20	0	12	0	11	0	122	21	17%
Saturday	14	3	4	0	6	1	2	1	5	0	31	5	16%	
Grand Total		685	468	310	91	351	19	262	9	189	11	1797	598	33%

April 21, 2009

Vancouver Casual Employee % Dispatched per Dispatch Board



Vancouver Gang Stats April 2009 (as at April 20/09)

Shift	2/3 Man Special				Basic				Dock Gantry				Grain			
	Req	All	Rec	Shrt	Req	All	Rec	Shrt	Req	All	Rec	Shrt	Req	All	Rec	Shrt
Shift 1 (0100)	8	8	8	0	6	6	6	0	70	70	70	0	41	41	41	0
Shift 2 (0800)	10	10	10	0	40	40	40	0	94	94	94	0	103	103	103	0
Shift 3 (1630)	7	7	7	0	23	23	23	0	90	90	90	0	81	81	81	0
Totals:	25	25	25	0	69	69	69	0	254	254	254	0	225	225	225	0
Percent of Shortage:	0.00%				0.00%				0.00%				0.00%			

Squamish Gang Stats April 2009 (as at April 20/09)

Shift	2/3 Man Special				Basic				Dock Gantry			
	Req	All	Rec	Shrt	Req	All	Rec	Shrt	Req	All	Rec	Shrt
Shift 1 (0100)	0	0	0	0	0	0	0	0	0	0	0	0
Shift 2 (0800)	0	0	0	0	20	20	20	0	0	0	0	0
Shift 3 (1630)	0	0	0	0	3	3	3	0	0	0	0	0
Totals:	0	0	0	0	23	23	23	0	0	0	0	0
Percent of Shortage:	0.00%				0.00%				0.00%			

April 21, 2009

Vancouver Island Gang Stats April 2009 (as at April 20/09)

Shift	2/3 Man Special				Basic				Dock Gantry			
	Req	All	Rec	Shrt	Req	All	Rec	Shrt	Req	All	Rec	Shrt
Shift 1 (0100)	0	0	0	0	0	0	0	0	0	0	0	0
Shift 2 (0800)	8	8	8	0	42	42	42	0	0	0	0	0
Shift 3 (1630)	7	7	7	0	8	8	8	0	0	0	0	0
Totals:	15	15	15	0	50	50	50	0	0	0	0	0
Percent of Shortage:	0.00%				0.00%				0.00%			

Dispatch Shortage Stats for April 2009

Shortages at commencement and post dispatch, month-to-date April 20/09

0100 Shift					0800 Shift				
Rating	At	Shifts	Post	Shifts	Rating	At	Shifts	Post	Shifts
	Dispatch		Dispatch			Dispatch		Dispatch	
DOCK GANTRY	6	2	0	0	BOMBARDIER	4	4	0	0
FIBERCO PUSHER	1	1	0	0	CLASS #1 LIC. (AIR)	2	1	2	1
H.D. MECH (CERT)	5	4	3	3	DOCK GANTRY	9	5	0	0
SHIP GANTRY	3	1	0	0	DOW CHEMICALS	1	1	0	0
TOPSIDE	3	2	0	0	H.D.MECH (CERT)	10	6	8	5
1630 Shift					HLT (WHITE DOT)	6	3	0	0
Rating	At	Shifts	Post	Shifts	TOPSIDE	4	2	0	0
	Dispatch		Dispatch		TRACKMAN	7	4	4	2
BULLDOZER (SHIP)	2	1	0	0	WELDER (CERT)	1	1	1	1
DOCK GANTRY	12	5	0	0	WHEAT MACHINE	2	2	0	0
H.D. MECH (CERT)	4	4	2	2	WHEAT SPECIALTY	2	2	0	0
HLT (WHITE DOT)	5	2	0	0					
RED DOG CRANE OP.	2	1	0	0					
WELDER (CERT)	1	1	1	1					
WHEAT SPEC. PECO	1	1	0	0					

Send your comments or contributions to the Bulletin's editor:

Gordon Clissold
editor@bcmea.com
 604-694-2318

Union Meeting Nights – April 2009

The Union Meeting Nights for April 2009 are as follows:

Vancouver (500)	Wed, April 22, 2009
New Westminster (502)	Wed, April 22, 2009
Chemainus (508)	Mon, April 20, 2009
Prince Rupert (505)	Tue, April 21, 2009

Please be guided by the provisions of Article 15 in the Collective Agreement respecting working restrictions and conditions on Union Meeting Nights.